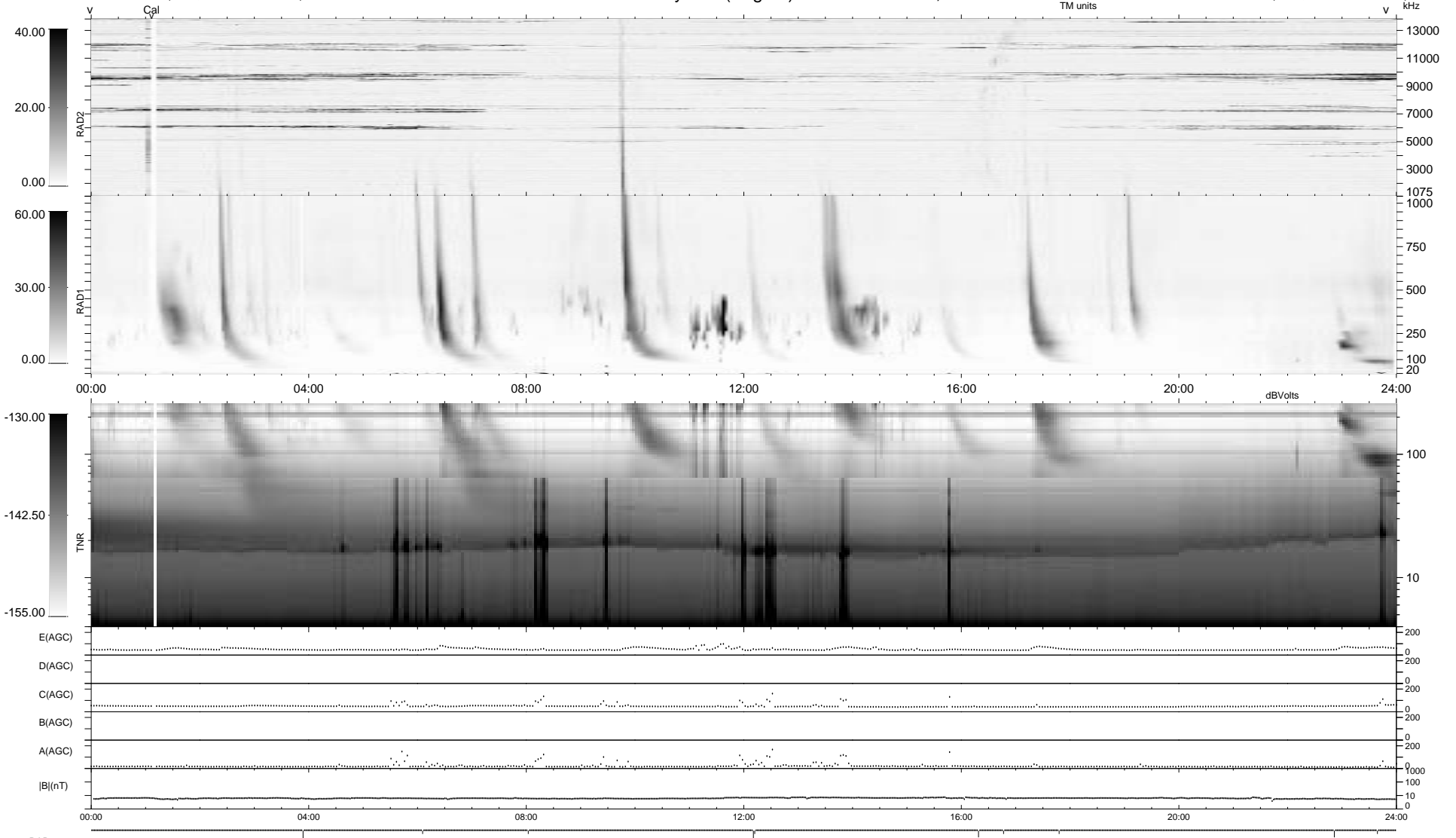


10 bad + 929 good MF/939MF projected (98%) - 0 missing MFs
 Avg interval = 180 secs
 Re = - 193.30 (36.47, -189.25, 14.75 GSE)

1.7d VMS-SunOS LZ version = v01
 DAILY Wed Feb 25, 2009
 Re = 200.14 (38.71, -195.77, 15.14 GSE)

WIND/WAVES Summary Plot (Page 1) for 20-DEC-2001, DOY = 354



RAD2
 Antenna Ey
 Mode LIN(1)
 SUM/SEP SEP
 Toggle OFF
 RAD1
 Antenna Ex
 Mode LIS(2,3)
 SUM/SEP SUM
 Toggle OFF
 TNR
 Antenna ExEy
 Mode A-32
 Sweep ACE