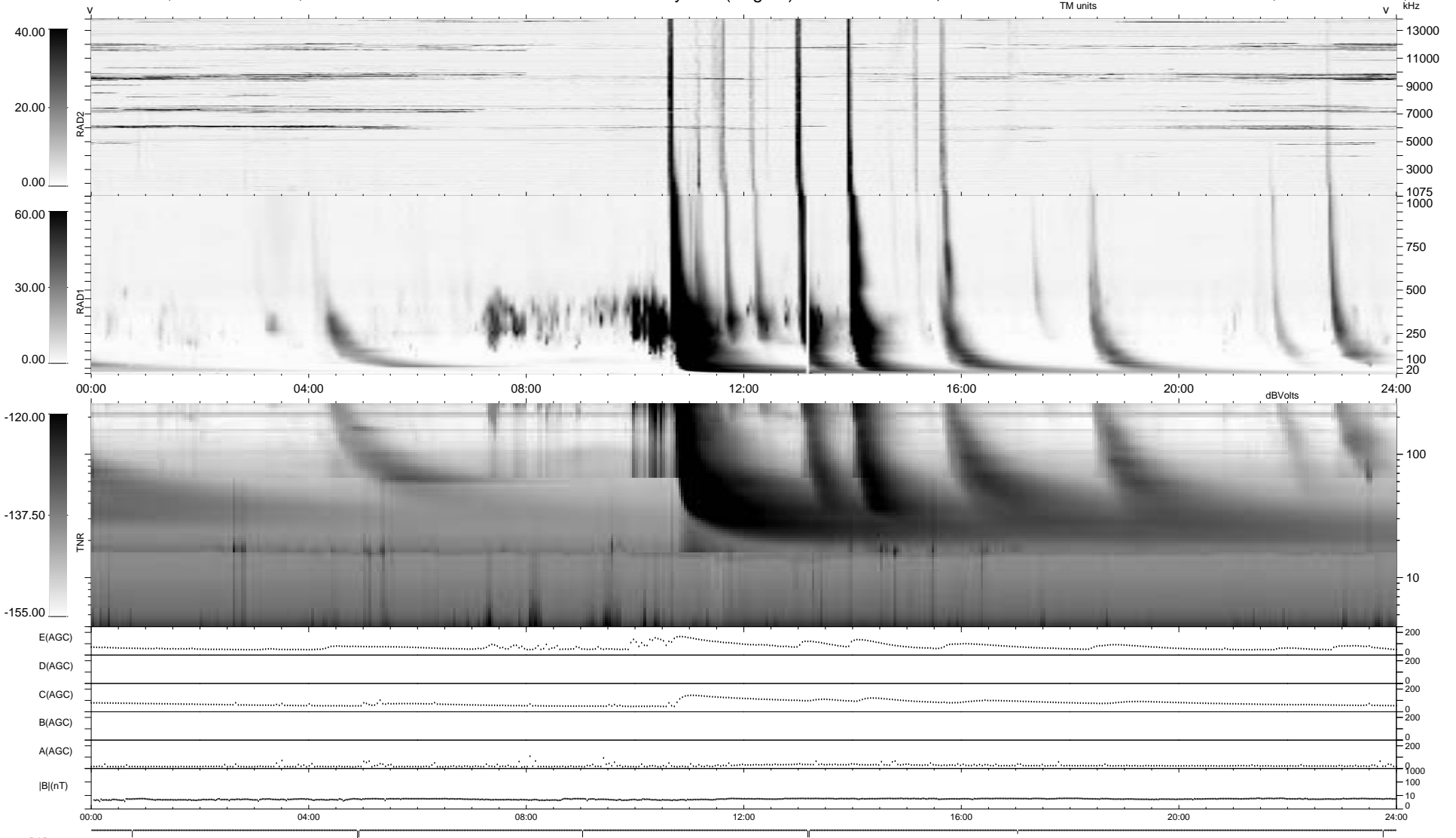


8 bad + 931 good MF/939MF projected (99%) - 0 missing MFs  
 Avg interval = 180 secs  
 Re = - 186.18 (33.93, -182.50, 14.33 GSE)

1.7d VMS-SunOS LZ version = v01  
 DAILY Wed Feb 25, 2009  
 Re = 193.25 (36.45, -189.21, 14.74 GSE)

### WIND/WAVES Summary Plot (Page 1) for 19-DEC-2001, DOY = 353



RAD2  
 Antenna Ey .....  
 Mode LIN(1) .....  
 SUM/SEP SEP .....  
 Toggle OFF .....  
 RAD1  
 Antenna Ex .....  
 Mode LIS(2,3) .....  
 SUM/SEP SUM .....  
 Toggle OFF .....  
 TNR  
 Antenna ExEy .....  
 Mode A-32 .....  
 Sweep ACE .....