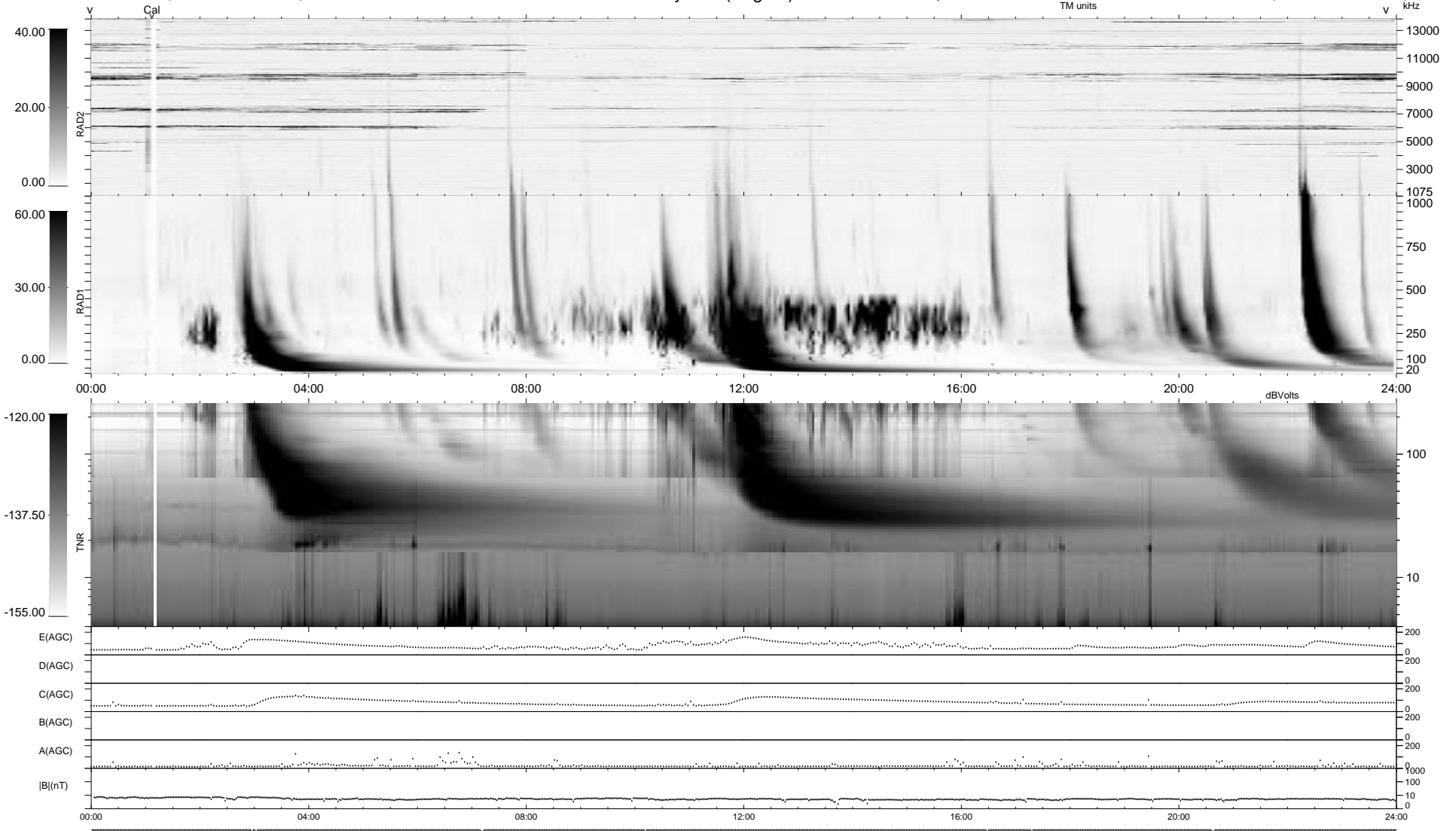


9 bad + 930 good MF/939MF projected (99%) - 0 missing MFs
 Avg interval = 180 secs
 Re = -178.81 (31.09, -175.54, 13.88 GSE)

1.7d VMS-SunOS LZ version = v01
 DAILY Wed Feb 25, 2009
 Re = 186.13 (33.91, -182.45, 14.32 GSE)

WIND/WAVES Summary Plot (Page 1) for 18-DEC-2001, DOY = 352



RAD2 Antenna Ey
 Mode LIN(1)
 SUM/SEP SEP
 Toggle OFF

RAD1 Antenna Ex
 Mode LIS(2,3)
 SUM/SEP SUM
 Toggle OFF

TNR Antenna ExEy
 Mode A-32
 Sweep ACE