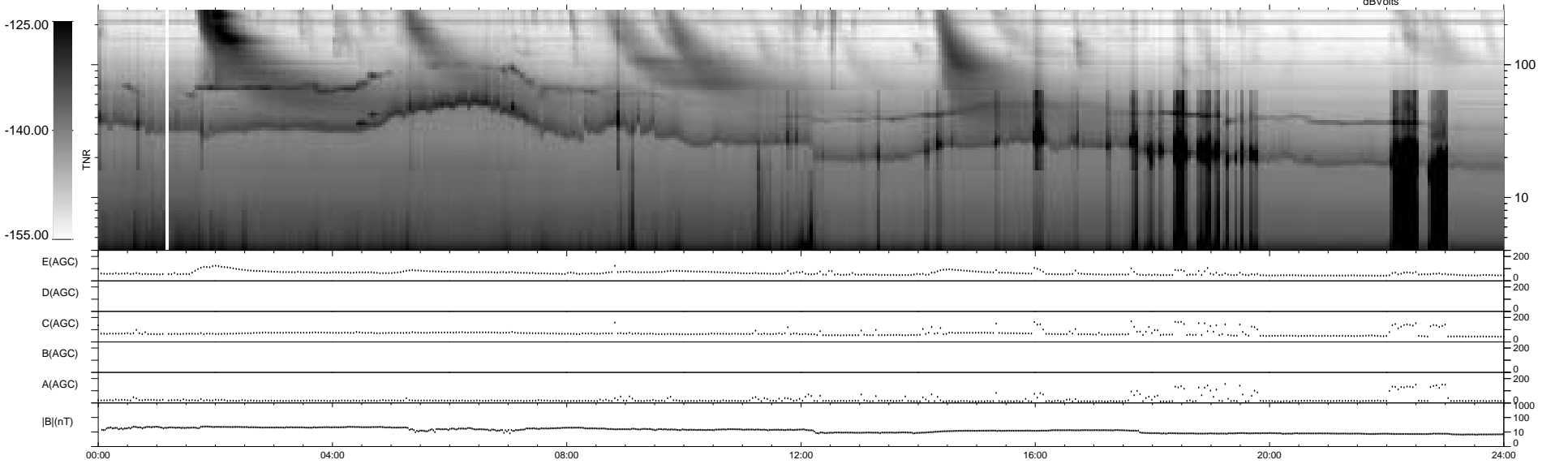
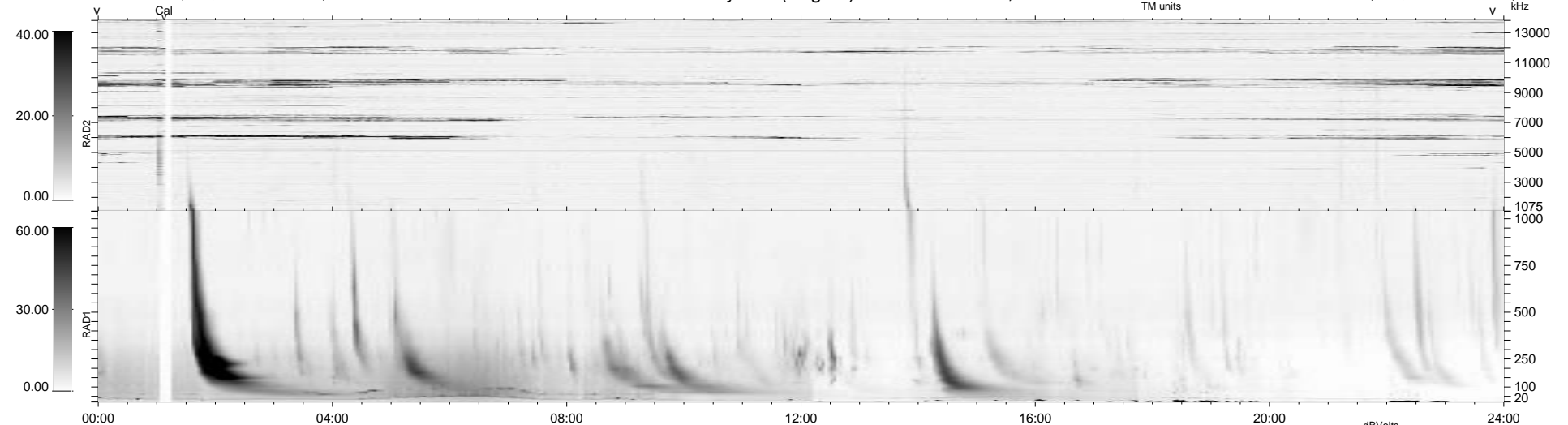


7 bad + 932 good MF/939MF projected (99%) - 0 missing MFs
 Avg interval = 180 secs
 Re = - 163.28 (24.46, -160.92, 12.89 GSE)

1.7d VMS-SunOS LZ version = v01
 DAILY Wed Feb 25, 2009
 Re = 171.13 (27.92, -168.31, 13.40 GSE)

WIND/WAVES Summary Plot (Page 1) for 16-DEC-2001, DOY = 350



RAD2
 Antenna Ey
 Mode LIN(1)
 SUM/SEP SEP
 Toggle OFF
 RAD1
 Antenna Ex
 Mode LIS(2,3)
 SUM/SEP SUM
 Toggle OFF
 TNR
 Antenna ExEy
 Mode A-32
 Sweep ACE