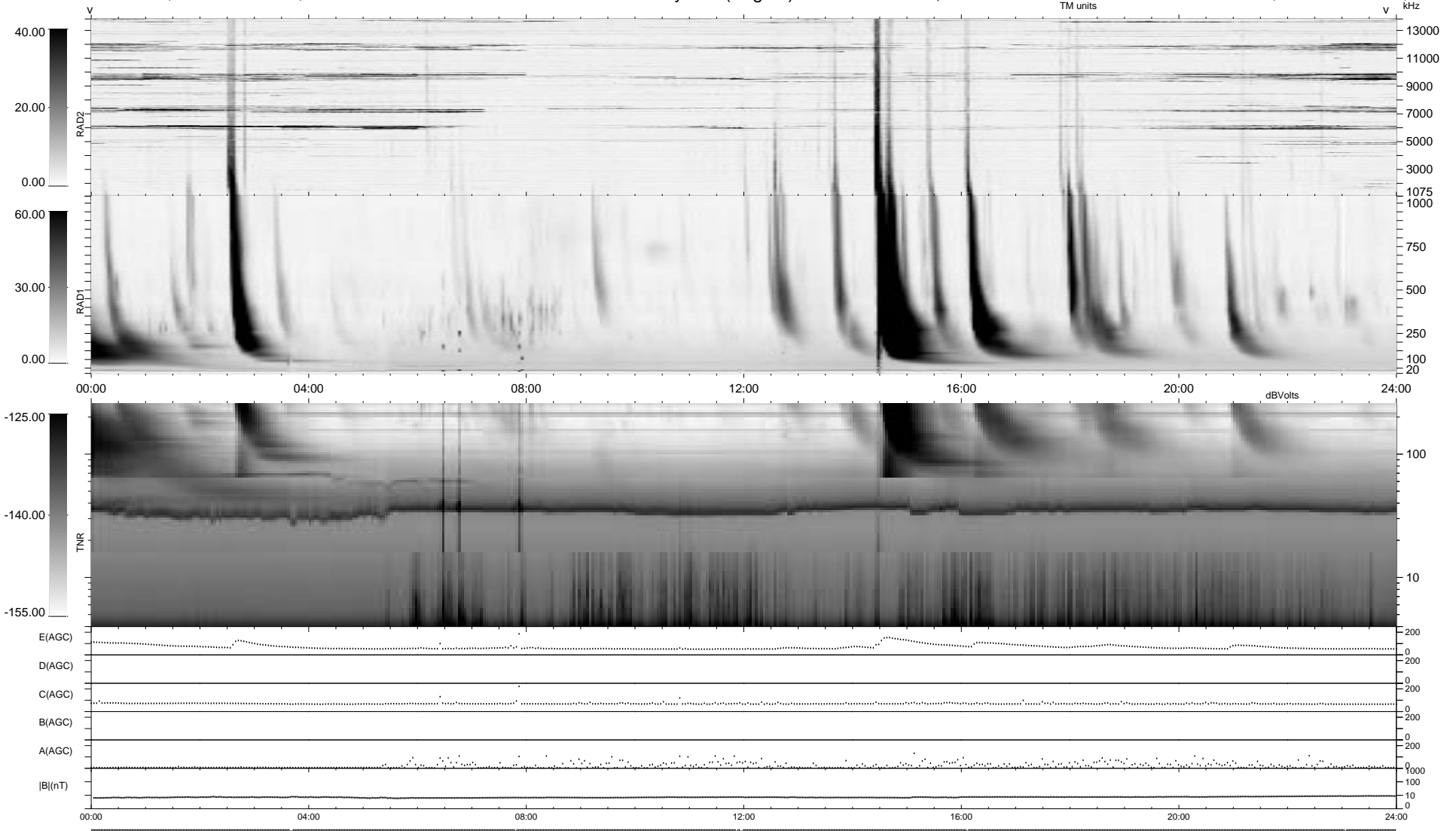


8 bad + 931 good MF/939MF projected (99%) - 0 missing MFs  
 Avg interval = 180 secs  
 Re = 137.64 (11.88, -136.68, 11.11 GSE)

1.7d VMS-SunOS LZ version = v01  
 DAILY Wed Feb 25, 2009  
 Re = 146.47 (16.41, -145.07, 11.75 GSE)

### WIND/WAVES Summary Plot (Page 1) for 13-DEC-2001, DOY = 347



RAD2  
 Antenna Ey  
 Mode LIN(1)  
 SUM/SEP SEP  
 Toggle OFF

RAD1  
 Antenna Ex  
 Mode LIS(2,3)  
 SUM/SEP SUM  
 Toggle OFF

TNR  
 Antenna ExEy  
 Mode A-32  
 Sweep ACE