

9 bad + 930 good MF/939MF projected (99%) - 0 missing MFs
 Avg interval = 180 secs
 Re = 118.73 (1.60, -118.32, 9.65 GSE)

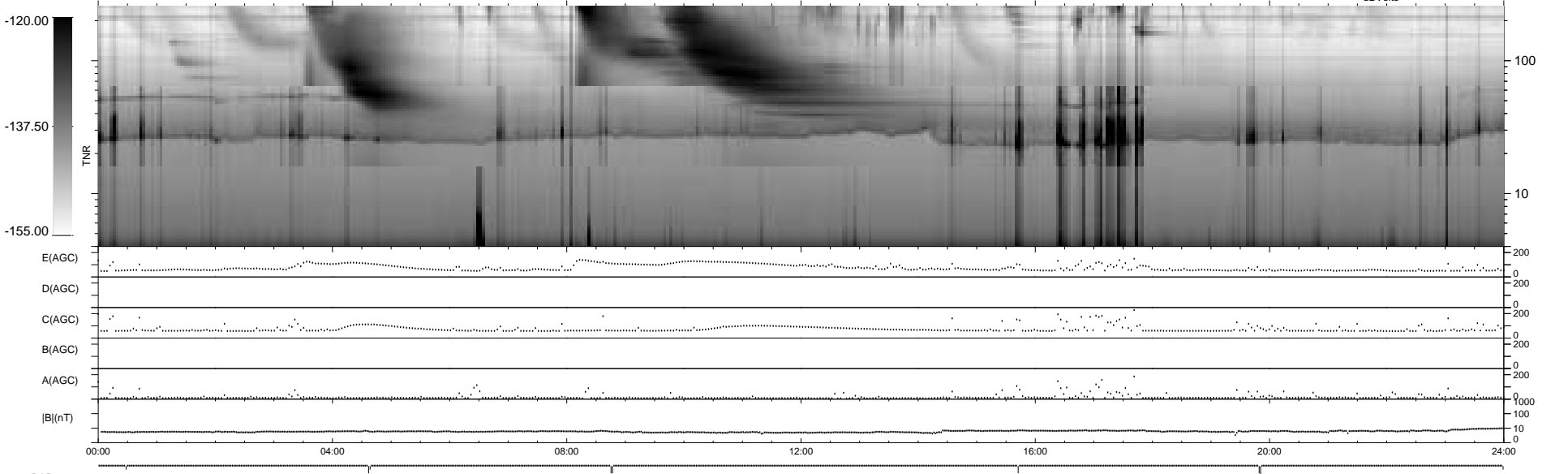
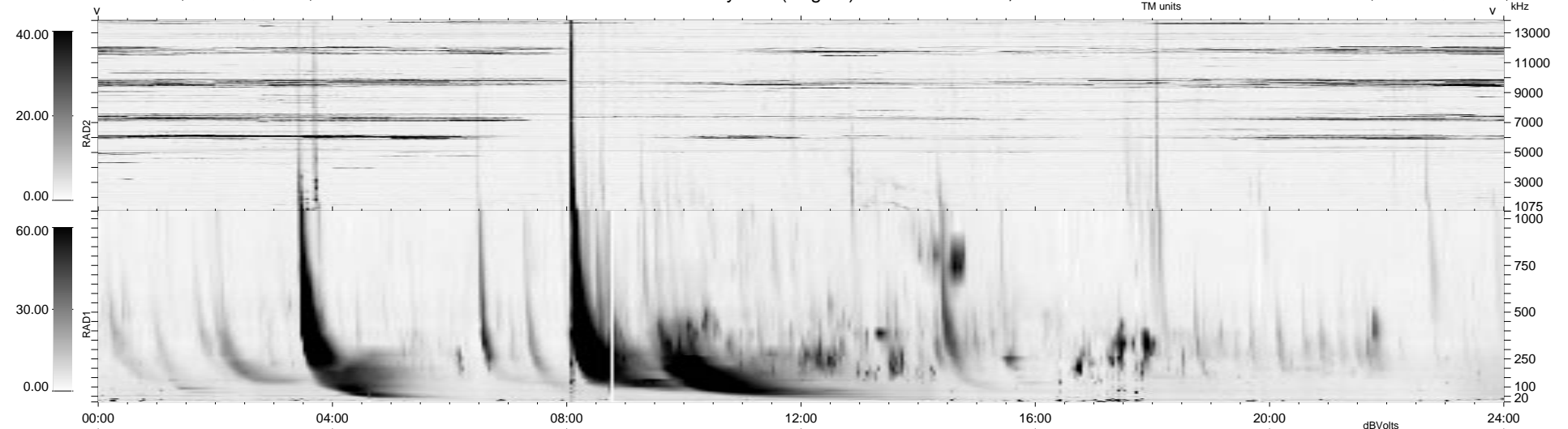
1.7d VMS-SunOS

LZ version = v01

WIND/WAVES Summary Plot (Page 1) for 11-DEC-2001, DOY = 345

DAILY Wed Feb 25, 2009

Re = 128.33 (6.90, -127.72, 10.41 GSE)



RAD2
 Antenna Ey
 Mode LIN(1)
 SUM/SEP SEP
 Toggle OFF

RAD1
 Antenna Ex
 Mode LIS(2,3)
 SUM/SEP SUM
 Toggle OFF

TNR
 Antenna ExEy
 Mode A-32
 Sweep ACE