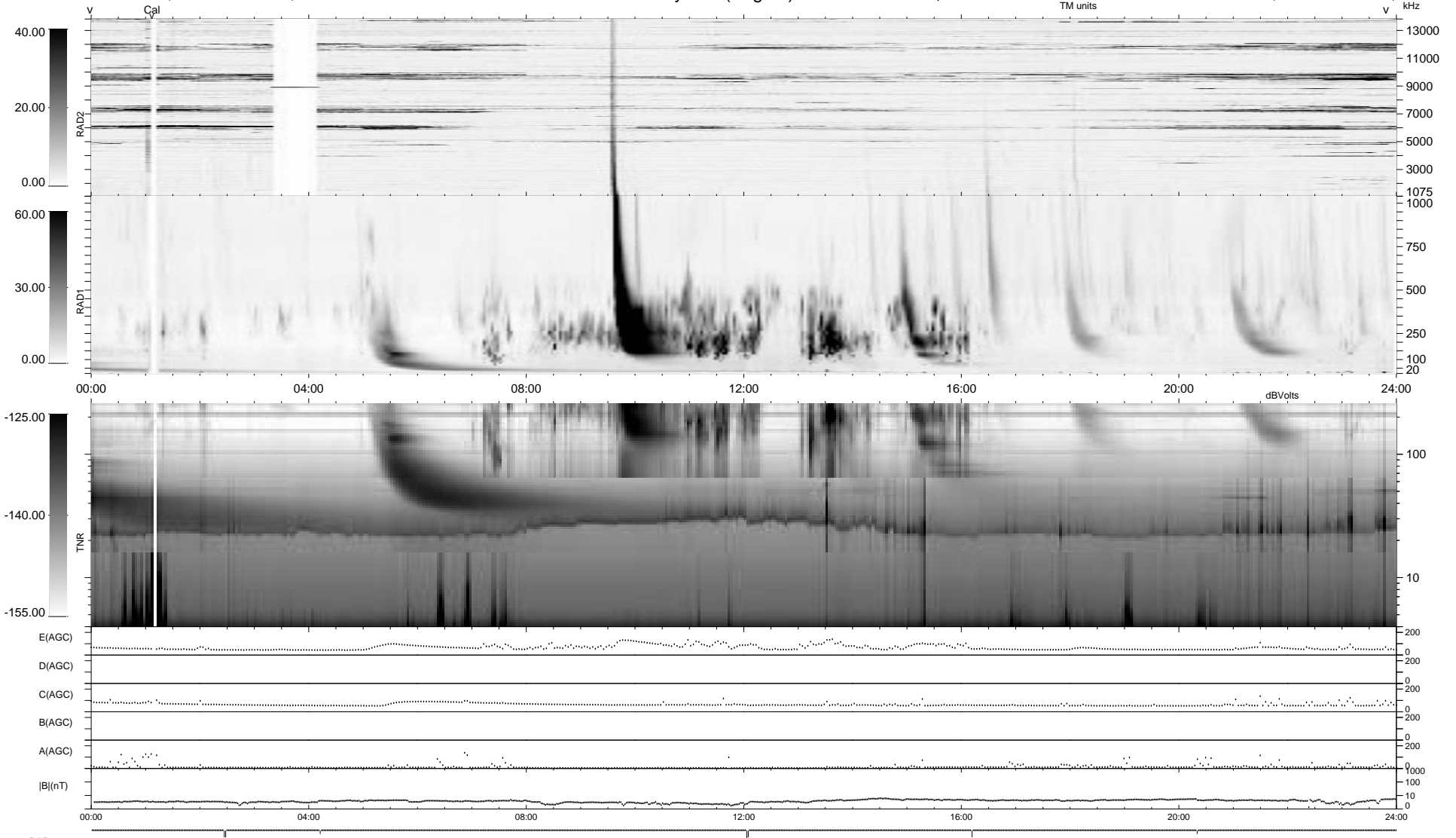


7 bad + 932 good MF/939MF projected (99%) - 0 missing MFs  
 Avg interval = 180 secs  
 Re = 108.64 (-4.10, -108.20, 8.82 GSE)

1.7d VMS-SunOS LZ version = v01  
 DAILY Wed Feb 25, 2009  
 Re = 118.66 (1.56, -118.26, 9.65 GSE)

WIND/WAVES Summary Plot (Page 1) for 10-DEC-2001, DOY = 344



```

RAD2
Antenna Ey .....
Mode LIN(1) ..... EIX(15Z) LIN(1) .....
SUM/SEP SEP .....
Toggle OFF .....

RAD1
Antenna Ex .....
Mode LIS(2,3) .....
SUM/SEP SUM .....
Toggle OFF .....

TNR
Antenna ExEy .....
Mode A-3Z .....
Sweep ACE .....
  
```