

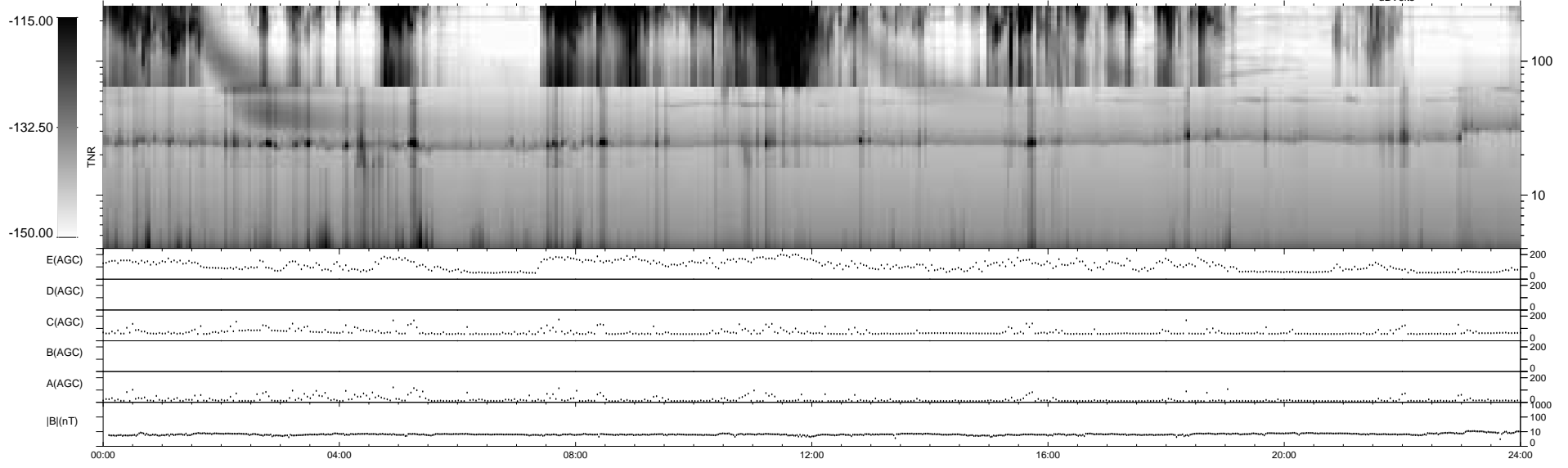
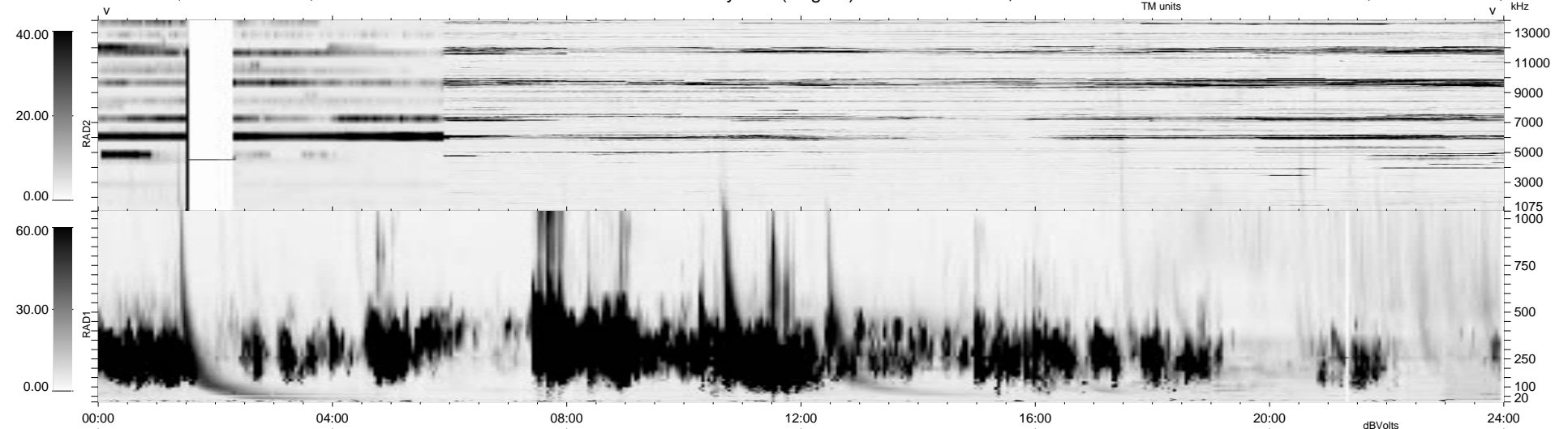
9 bad + 930 good MF/939MF projected (99%) - 0 missing MFs  
 Avg interval = 180 secs  
 Re = 63.43 (-28.77, -56.35, 4.40 GSE)

1.7d VMS-SunOS

LZ version = v01

### WIND/WAVES Summary Plot (Page 1) for 06-DEC-2001, DOY = 340

DAILY Wed Feb 25, 2009  
 Re = 75.48 (-22.91, -71.70, 5.71 GSE)



```

RAD2
Antenna  Ey .....
Mode     LIN(8) ..... FIX(69) . . LIN(8) . . LIN(1) . .
SUM/SEP  SEP .....
Toggle   OFF .....

RAD1
Antenna  Ex .....
Mode     LIS(2,3) .....
SUM/SEP  SUM .....
Toggle   OFF .....

TNR
Antenna  ExEy .....
Mode     A-32 .....
Sweep    ACE .....
  
```