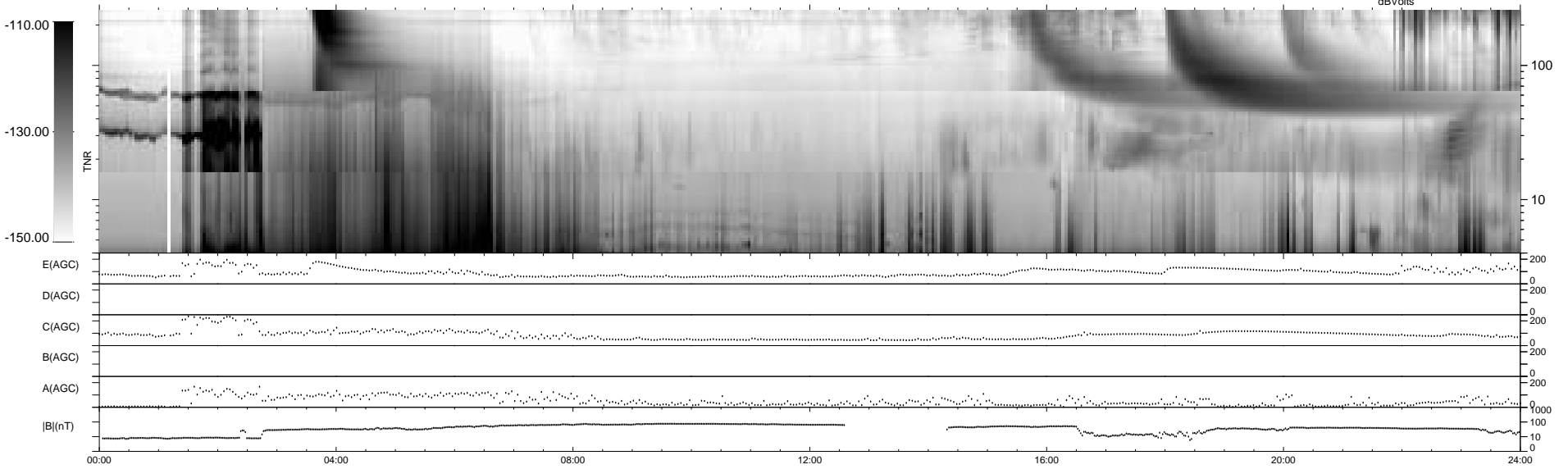
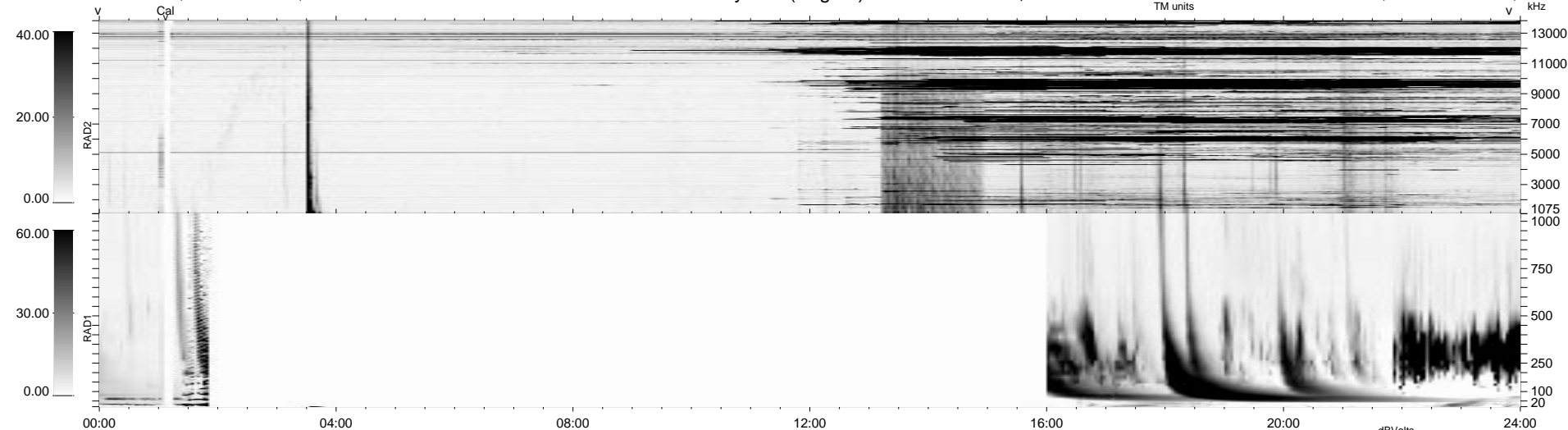


7 bad + 932 good MF/939MF projected (99%) - 0 missing MFs  
 Avg interval = 180 secs  
 Re = 16.23 (16.20, 0.99, 0.18 GSE)

1.7d VMS-SunOS LZ version = v01

WIND/WAVES Summary Plot (Page 1) for 02-DEC-2001, DOY = 336

DAILY Wed Feb 25, 2009  
 Re = 17.71 (-17.68, -1.06, -0.17 GSE)



RAD2  
 Antenna Ey  
 Mode LIN(1)  
 SUM/SEP SEP  
 Toggle OFF

RAD1  
 Antenna Ex  
 Mode LIS(2,3) LIN(4)(8,10) LIS(2,3)  
 SUM/SEP SUM SEP SUM  
 Toggle OFF

TNR  
 Antenna ExEy  
 Mode A-32  
 Sweep ACE