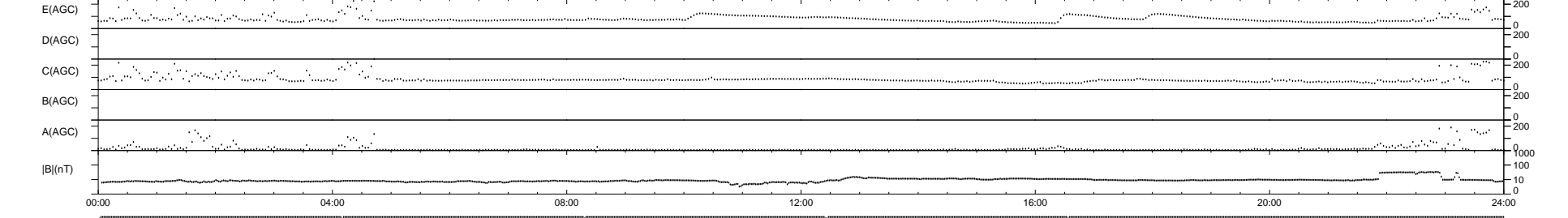
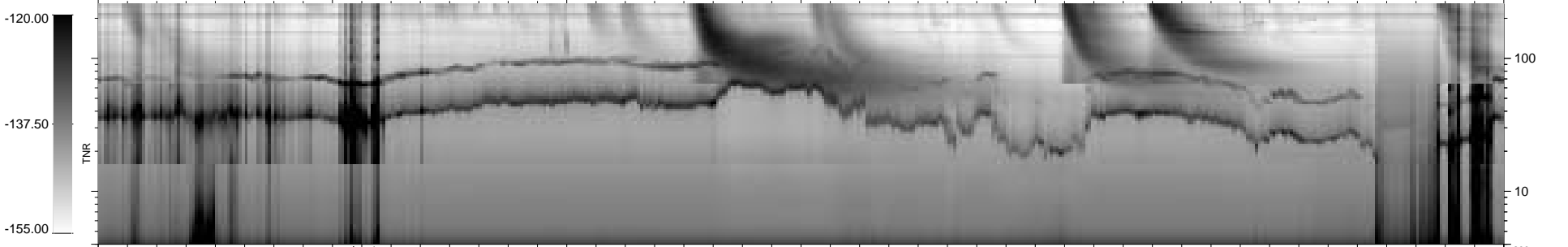
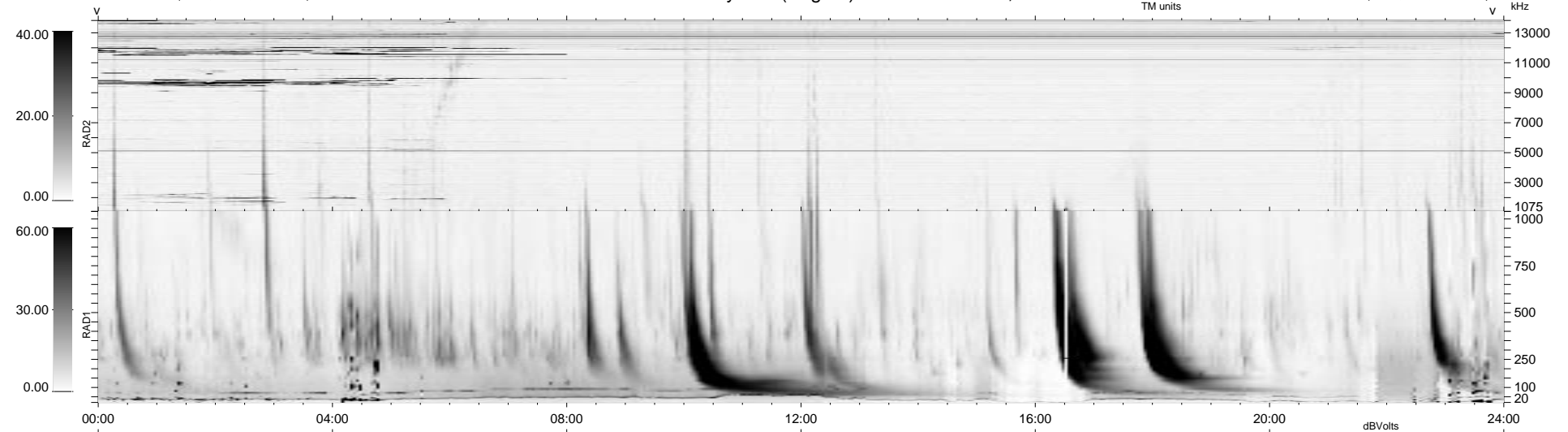


6 bad + 933 good MF/939MF projected (99%) - 0 missing MFs  
 Avg interval = 180 secs  
 Re = 34.74 (27.14, -21.58, 2.28 GSE)

1.7d VMS-SunOS LZ version = v01  
 DAILY Wed Feb 25, 2009  
 Re = 16.37 (16.35, 0.81, 0.20 GSE)

### WIND/WAVES Summary Plot (Page 1) for 01-DEC-2001, DOY = 335



```

RAD2
Antenna Ey .....
Mode LIN(1) .....
SUM/SEP SEP .....
Toggle OFF .....

RAD1
Antenna Ex .....
Mode LIS(2,3) .....
SUM/SEP SUM .....
Toggle OFF .....

TNR
Antenna ExEy .....
Mode A-32 .....
Sweep ACE .....
  
```