

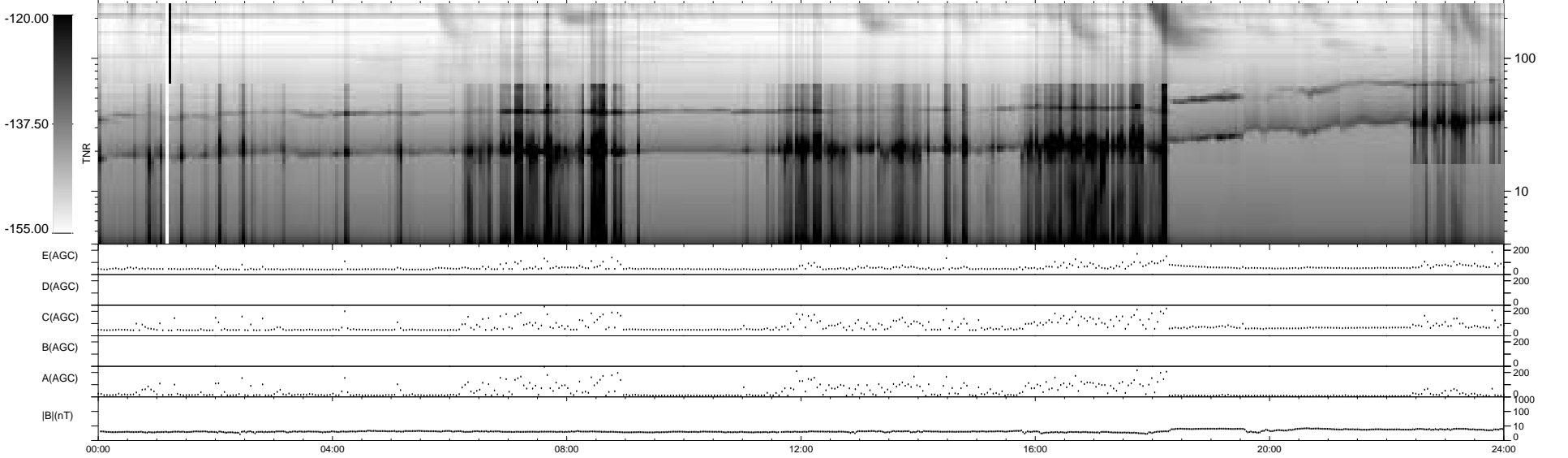
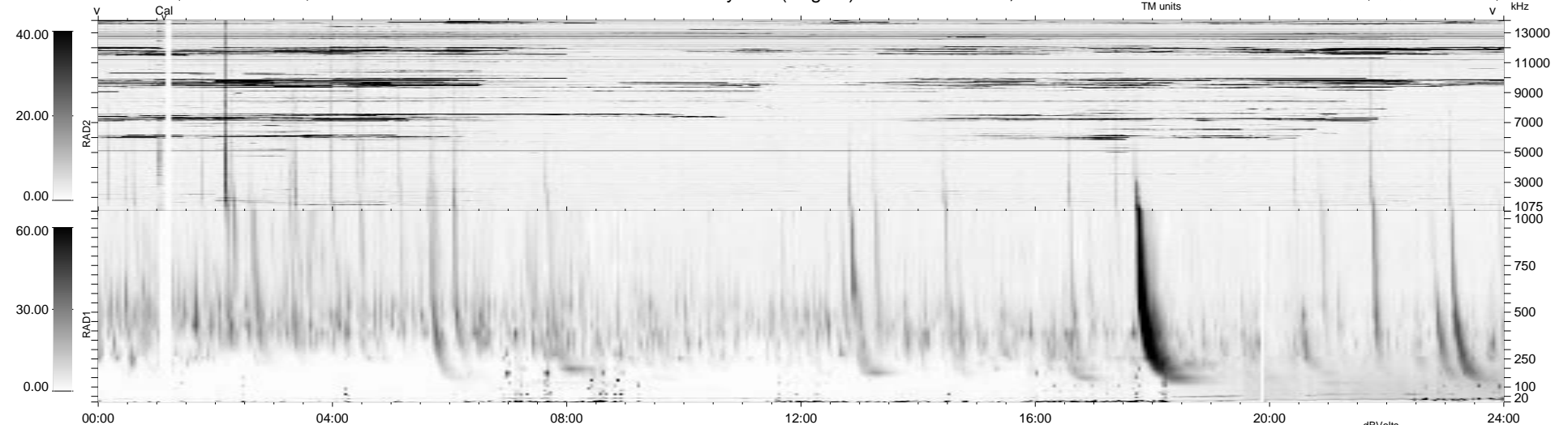
7 bad + 933 good MF/940MF projected (99%) - 0 missing MFs
 Avg interval = 180 secs
 Re = 48.45 (29.63, -38.15, 3.74 GSE)

1.7d VMS-SunOS

LZ version = v02

WIND/WAVES Summary Plot (Page 1) for 30-NOV-2001, DOY = 334

DAILY Wed Feb 25, 2009
 Re = 34.85 (27.17, -21.71, 2.29 GSE)



RAD2
 Antenna Ey
 Mode LIN(1)
 SUM/SEP SEP
 Toggle OFF
 RAD1
 Antenna Ex
 Mode LIS(2,3)
 SUM/SEP SUM
 Toggle OFF
 TNR
 Antenna ExEy
 Mode A-32
 Sweep ACE