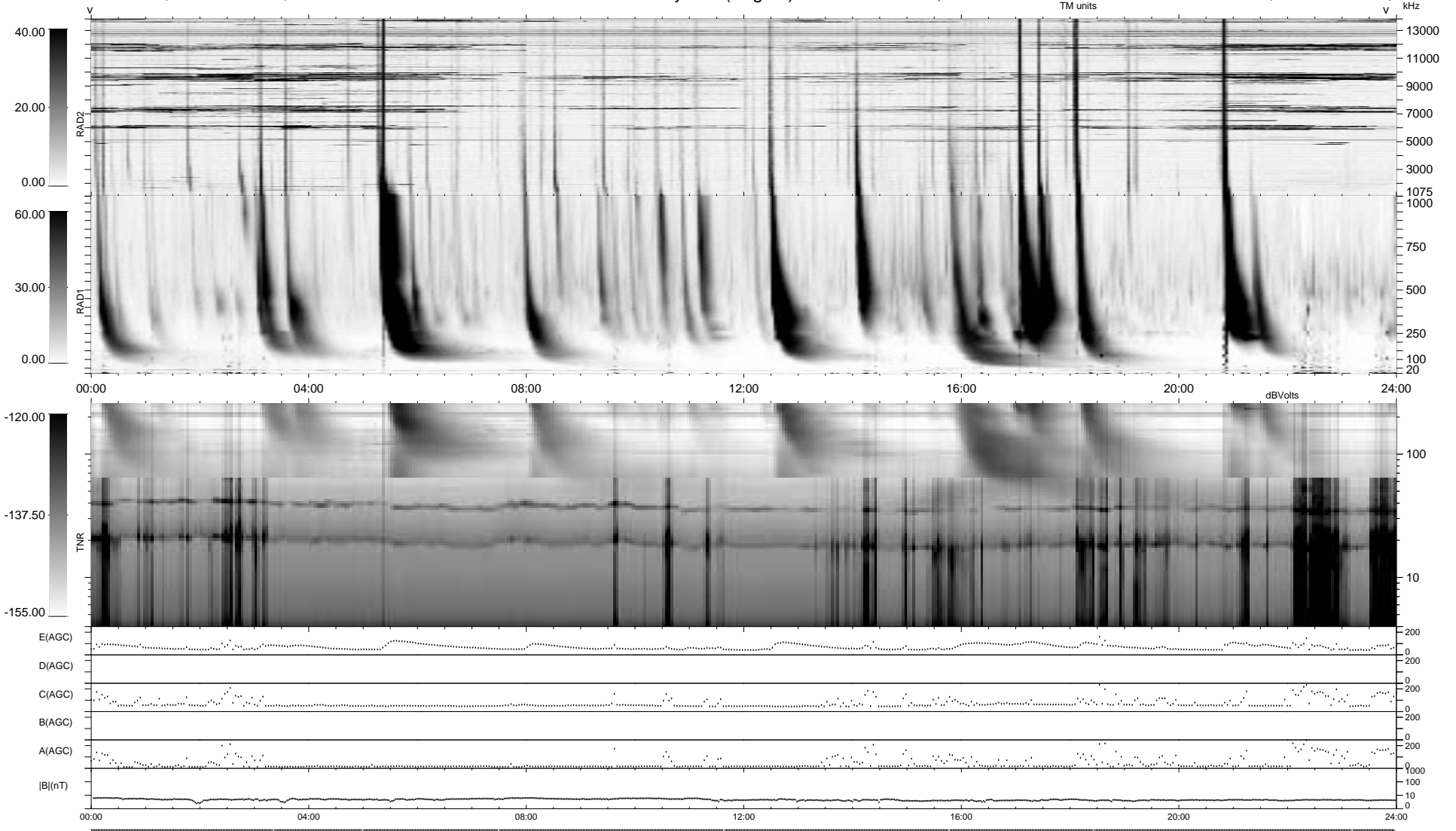


8 bad + 931 good MF/939MF projected (99%) - 0 missing MFs
 Avg interval = 180 secs
 Re = 58.90 (29.47, -50.76, 4.81 GSE)

1.7d VMS-SunOS LZ version = v01
 DAILY Wed Feb 25, 2009
 Re = 48.53 (29.63, -38.25, 3.75 GSE)

WIND/WAVES Summary Plot (Page 1) for 29-NOV-2001, DOY = 333



RAD2
 Antenna Ey
 Mode LIN(1)
 SUM/SEP SEP
 Toggle OFF
 RAD1
 Antenna Ex
 Mode LIS(2.8)
 SUM/SEP SUM
 Toggle OFF
 TNR
 Antenna ExEy
 Mode A-32
 Sweep ACE