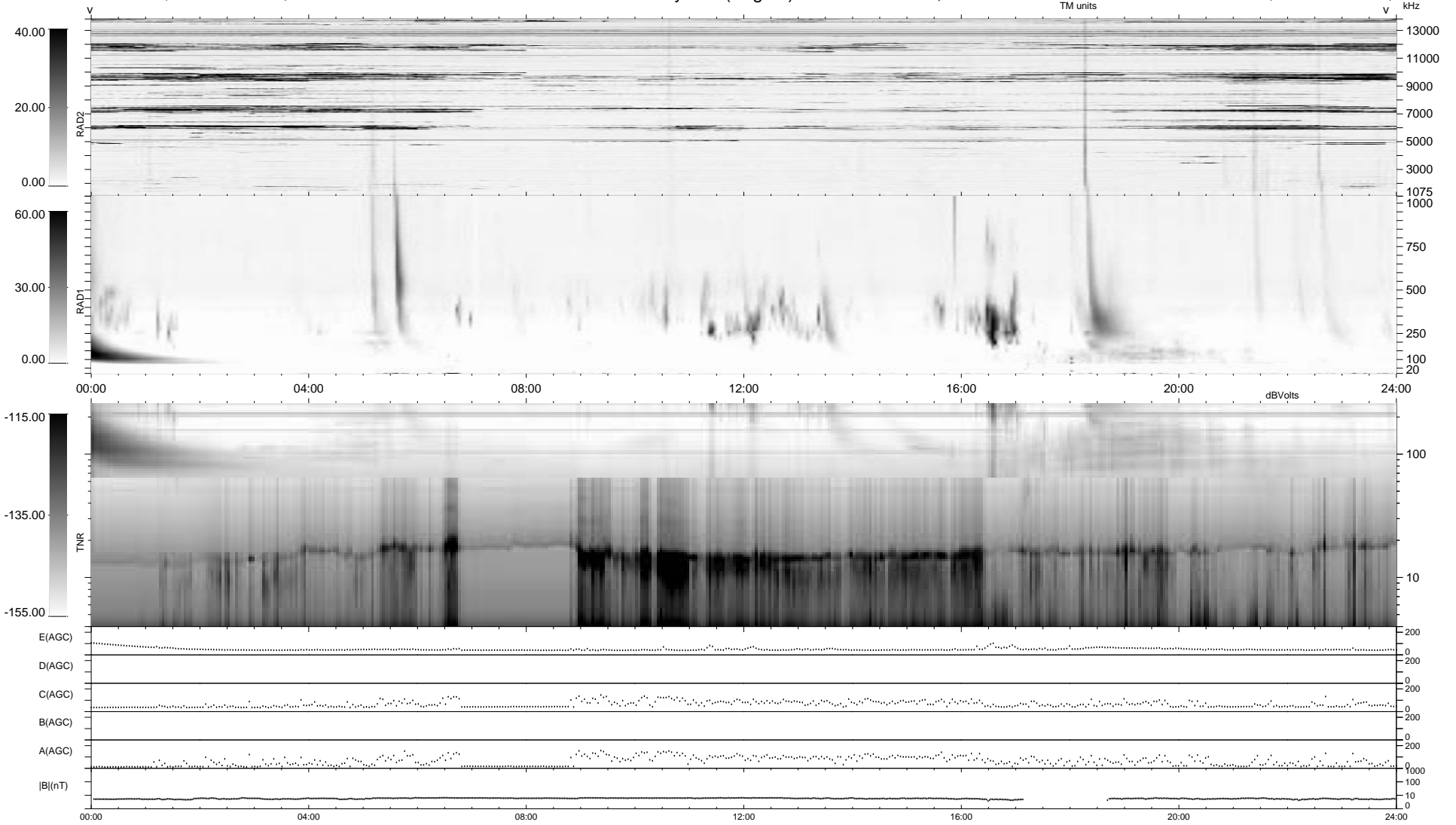


10 bad + 929 good MF/939MF projected (98%) - 0 missing MFs  
 Avg interval = 180 secs  
 Re = 73.05 (25.90, -68.03, 6.20 GSE)

1.7d VMS-SunOS LZ version = v01  
 DAILY Wed Feb 25, 2009  
 Re = 67.00 (28.04, -60.59, 5.61 GSE)

WIND/WAVES Summary Plot (Page 1) for 27-NOV-2001, DOY = 331



RAD2  
 Antenna Ey .....  
 Mode LIN(1) .....  
 SUM/SEP SEP .....  
 Toggle OFF .....  
 RAD1  
 Antenna Ex .....  
 Mode LIS(2,3) .....  
 SUM/SEP SUM .....  
 Toggle OFF .....  
 TNR  
 Antenna ExEy .....  
 Mode A-32 .....  
 Sweep ACE .....