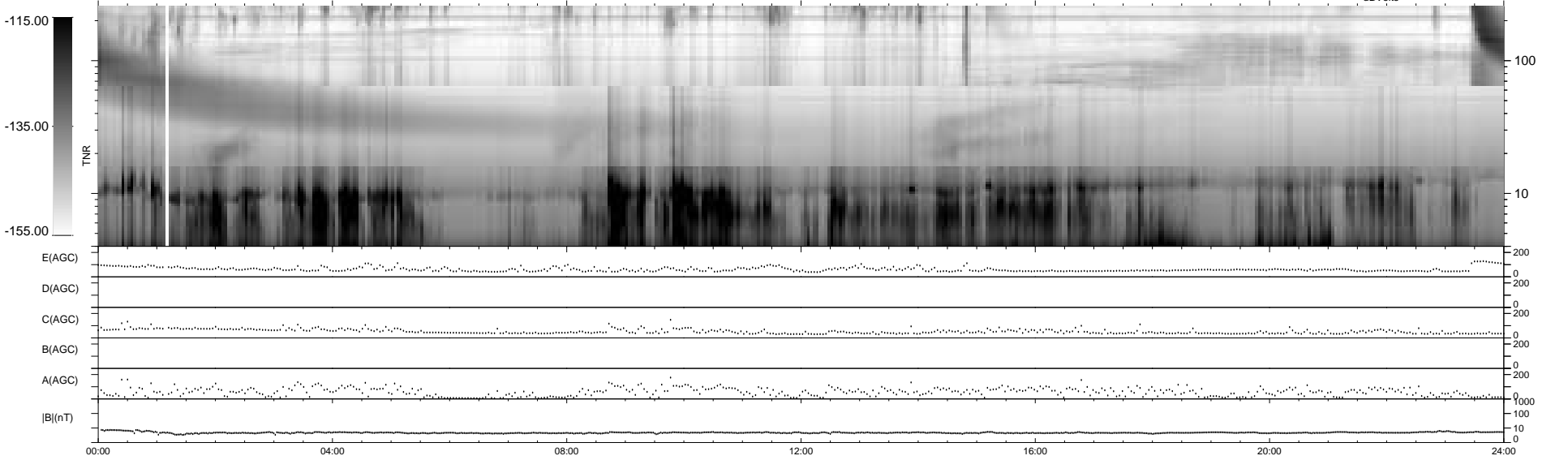
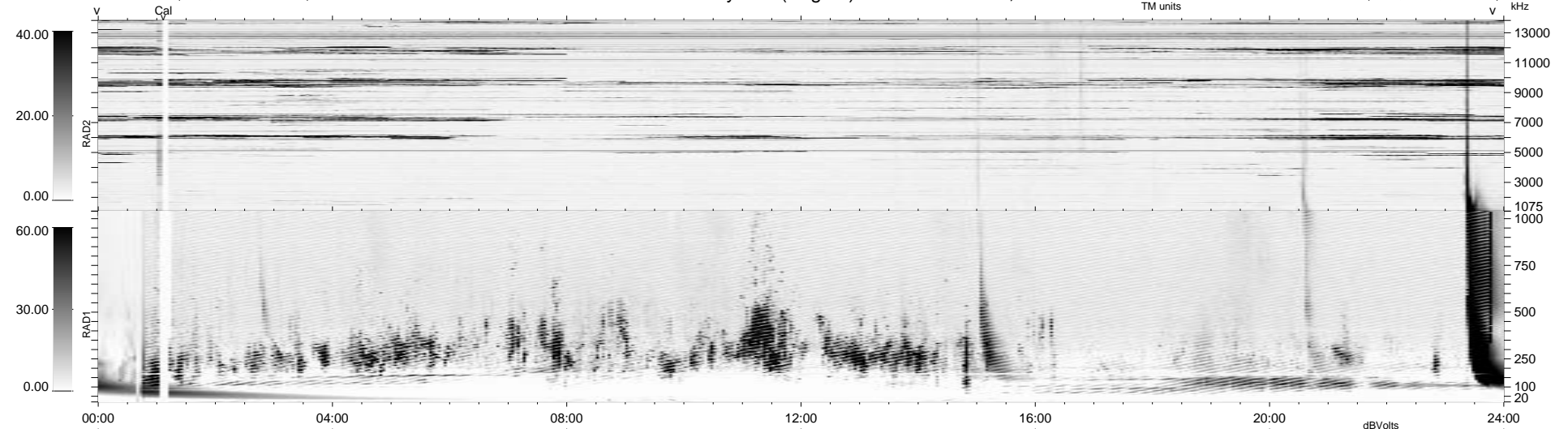


7 bad + 932 good MF/939MF projected (99%) - 0 missing MFs
 Avg interval = 180 secs
 Re = 77.48 (23.24, -73.62, 6.61 GSE)

1.7d VMS-SunOS LZ version = v02

WIND/WAVES Summary Plot (Page 1) for 26-NOV-2001, DOY = 330

DAILY Wed Feb 25, 2009
 Re = 73.09 (25.88, -68.07, 6.20 GSE)



RAD2
 Antenna Ey
 Mode LIN(1)
 SUM/SEP SEP
 Toggle OFF

RAD1
 Antenna Ex
 Mode LIS(2,3)
 SUM/SEP SUM SEP
 Toggle OFF

TNR
 Antenna ExEy
 Mode A-32
 Sweep ACE