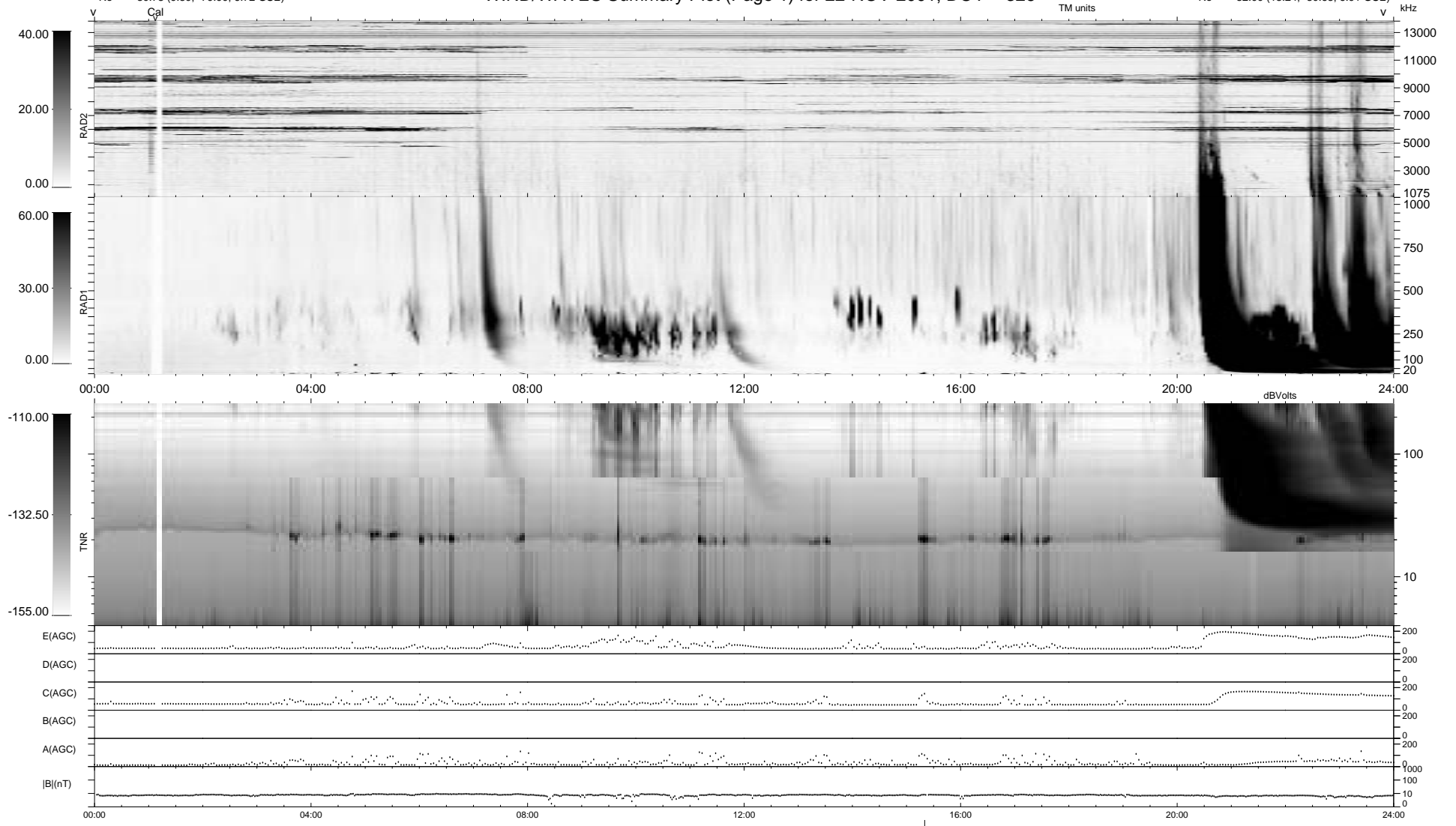


6 bad + 933 good MF/940MF projected (99%) - 1 missing MF
 Avg interval = 180 secs
 Re = 80.73 (9.39, -79.90, 6.72 GSE)

1.7d VMS-SunOS LZ version = v01

WIND/WAVES Summary Plot (Page 1) for 22-NOV-2001, DOY = 326

DAILY Wed Feb 25, 2009
 Re = 82.00 (13.24, -80.63, 6.91 GSE)



```

RAD2
Antenna Ey .....
Mode LIN(1) .....
SUM/SEP SEP .....
Toggle OFF .....

RAD1
Antenna Ex .....
Mode LIS(2,3) .....
SUM/SEP SUM .....
Toggle OFF .....

TNR
Antenna ExEy .....
Mode A-32 .....
Sweep ACE .....
  
```