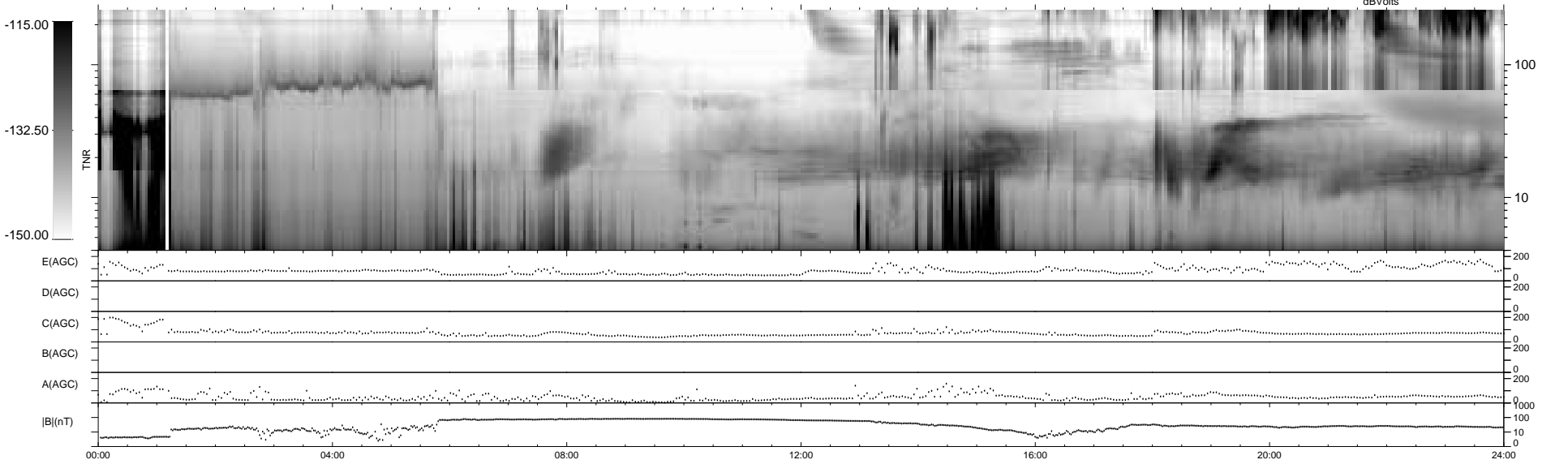
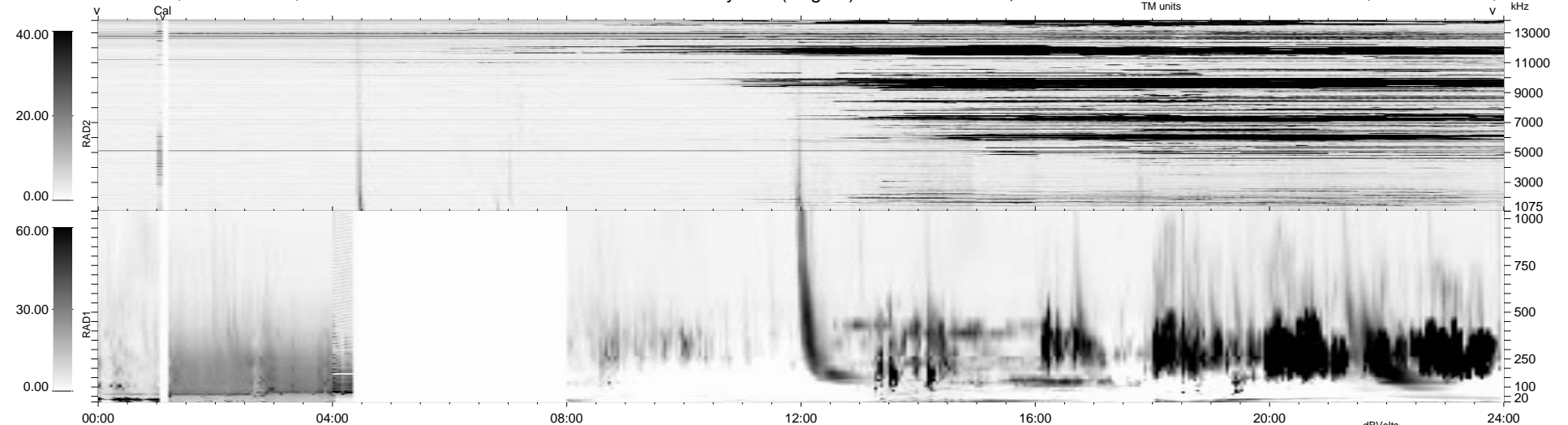


5 bad + 934 good MF/939MF projected (99%) - 0 missing MFs
 Avg interval = 180 secs
 Re = 15.65 (14.38, 6.19, 0.11 GSE)

1.7d VMS-SunOS LZ version = v01

WIND/WAVES Summary Plot (Page 1) for 14-NOV-2001, DOY = 318

DAILY Wed Feb 25, 2009
 Re = 18.31 (-16.16, -8.62, 0.03 GSE)



```

RAD2
Antenna Ey .....
Mode LIN(1) .....
SUM/SEP SEP .....
Toggle OFF .....

RAD1
Antenna Ex .....
Mode LIS(2,3) ..... LIS(2,8) .....
SUM/SEP SUM ..... SEP ..... SUM .....
Toggle OFF .....

TNR
Antenna ExEy .....
Mode A-32 .....
Sweep ACE .....
  
```