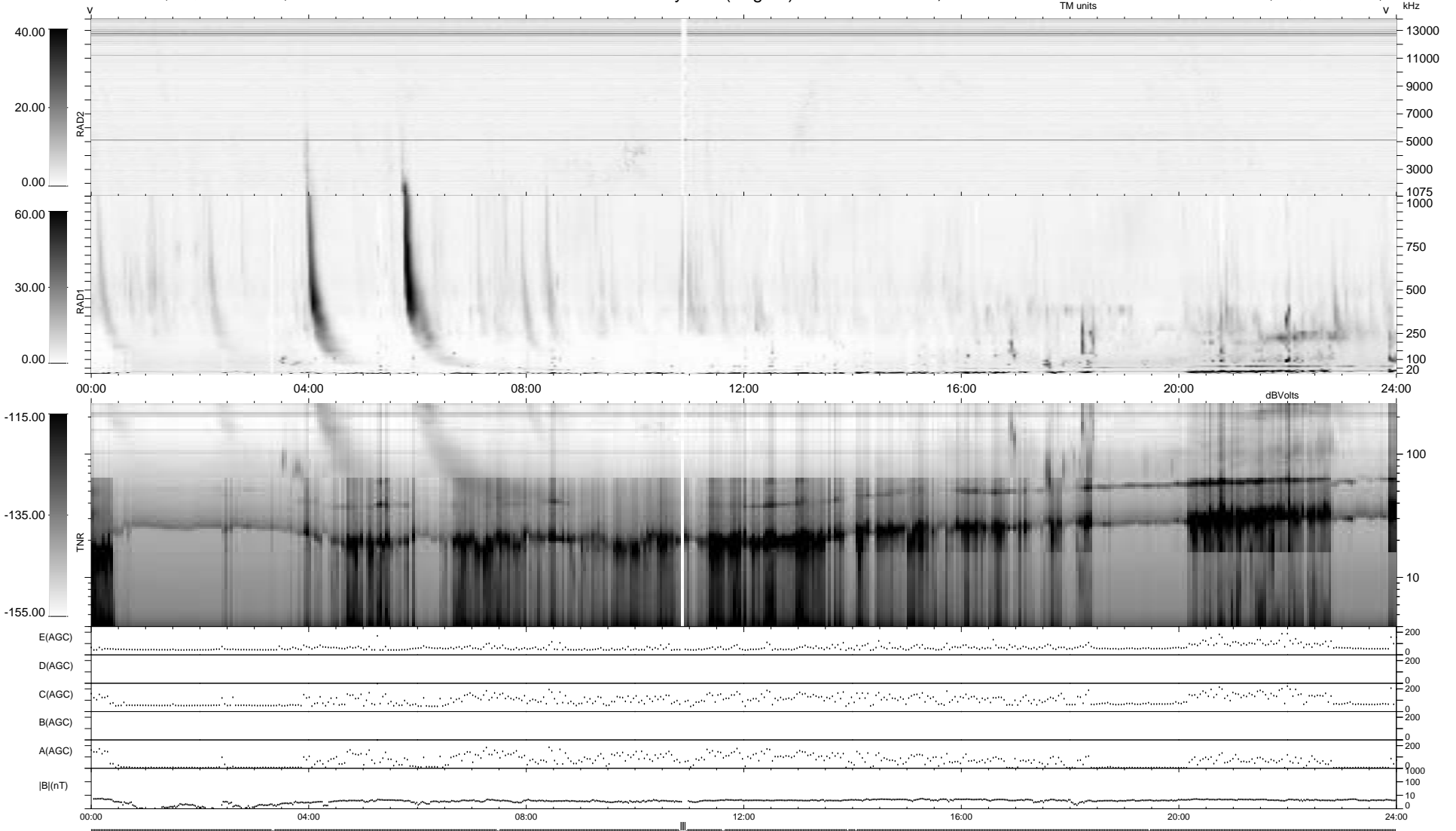


11 bad + 924 good MF/939MF projected (98%) - 4 missing MFs
 Avg interval = 180 secs
 Re = 34.62 (32.57, -11.53, 2.22 GSE)

1.7d VMS-SunOS LZ version = v01

WIND/WAVES Summary Plot (Page 1) for 13-NOV-2001, DOY = 317

DAILY Wed Feb 25, 2009
 Re = 15.80 (14.59, 6.07, 0.13 GSE)



```

RAD2
Antenna Ey .....
Mode LIN(1) .....
SUM/SEP SEP .....
Toggle OFF .....

RAD1
Antenna Ex .....
Mode LIS(2.3) .....
SUM/SEP SUM .....
Toggle OFF .....

TNR
Antenna ExEy .....
Mode A-32 .....
Sweep ACE .....
  
```