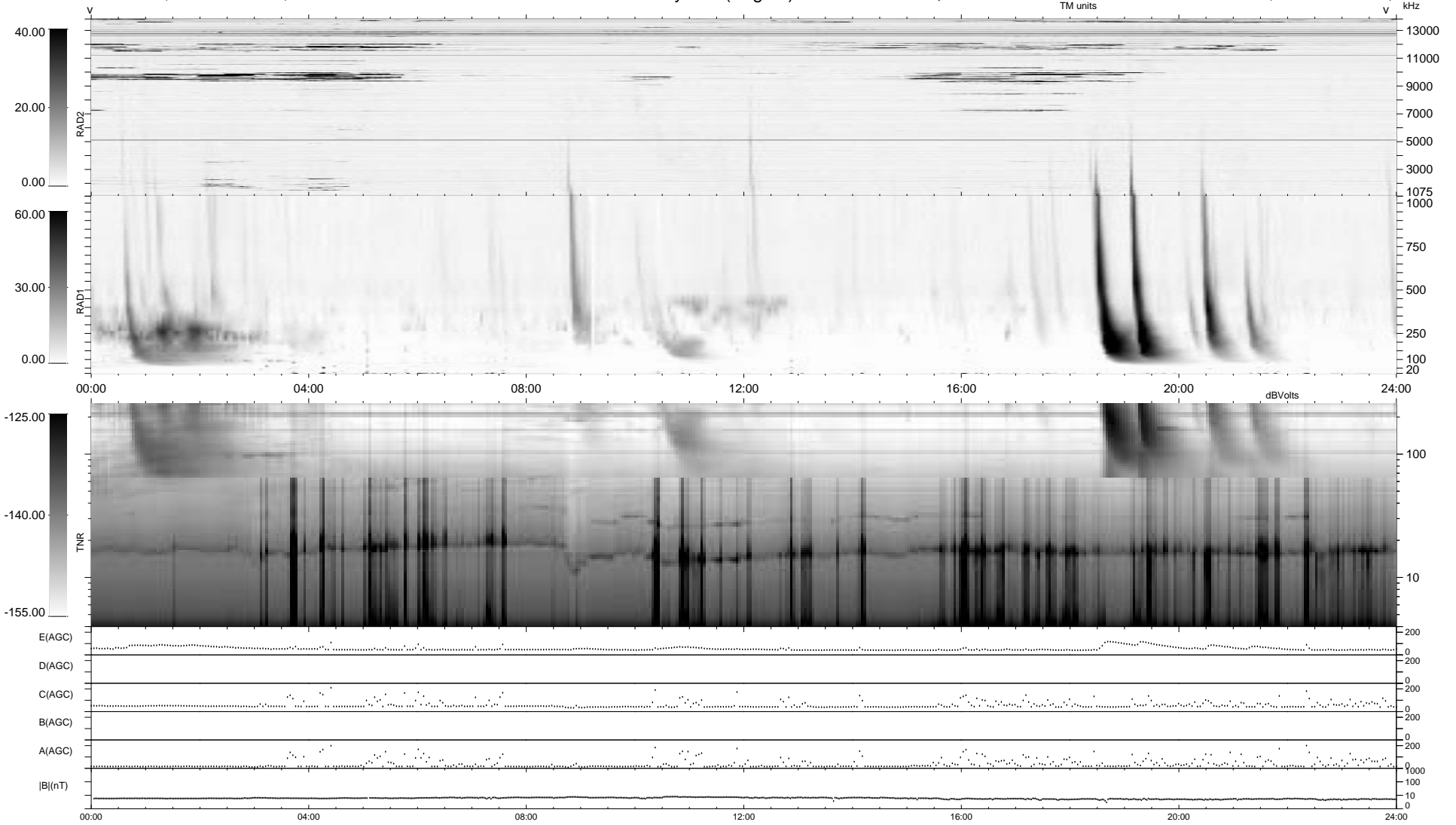


0 bad + 2 good MF/ZMF projected (100%) - 0 missing MFs
 Avg interval = 180 secs
 Re = 60.06 (45.12, -39.34, 4.91 GSE)

1.7d VMS-SunOS LZ version = v01
 DAILY Wed Sep 10, 2008
 Re = 48.86 (40.79, -26.64, 3.73 GSE)

WIND/WAVES Summary Plot (Page 1) for 11-NOV-2001, DOY = 315



```

RAD2
Antenna Ey .....
Mode LIN(1) .....
SUM/SEP SEP .....
Toggle OFF .....

RAD1
Antenna Ex .....
Mode LIS(2,3) .....
SUM/SEP SUM .....
Toggle OFF .....

TNR
Antenna ExEy .....
Mode A-32 .....
Sweep ACE .....
  
```