

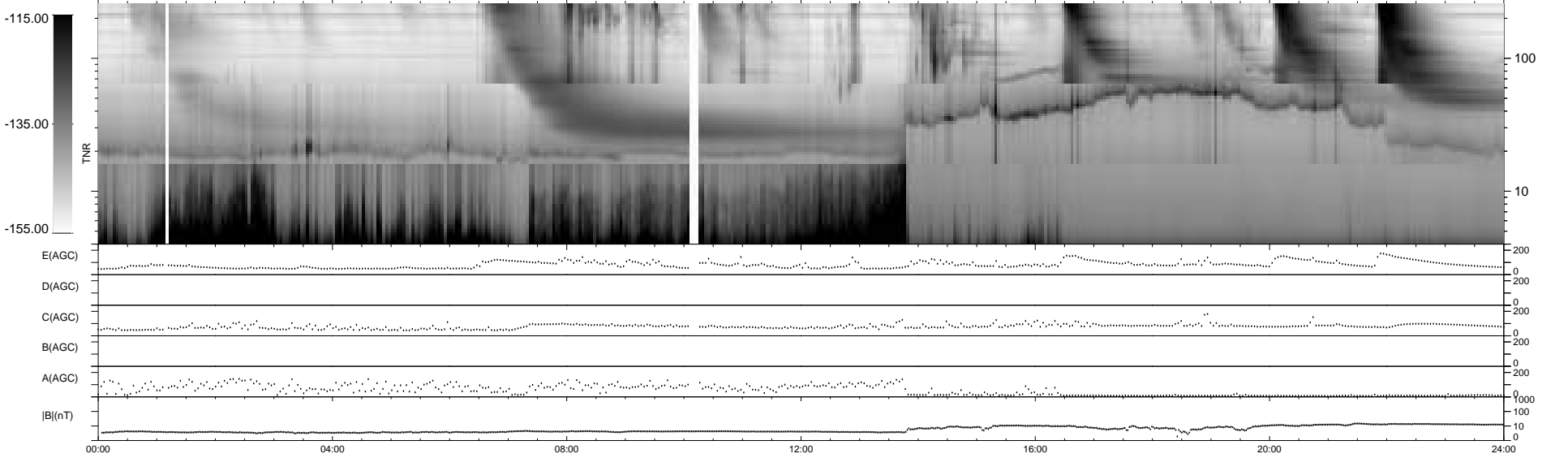
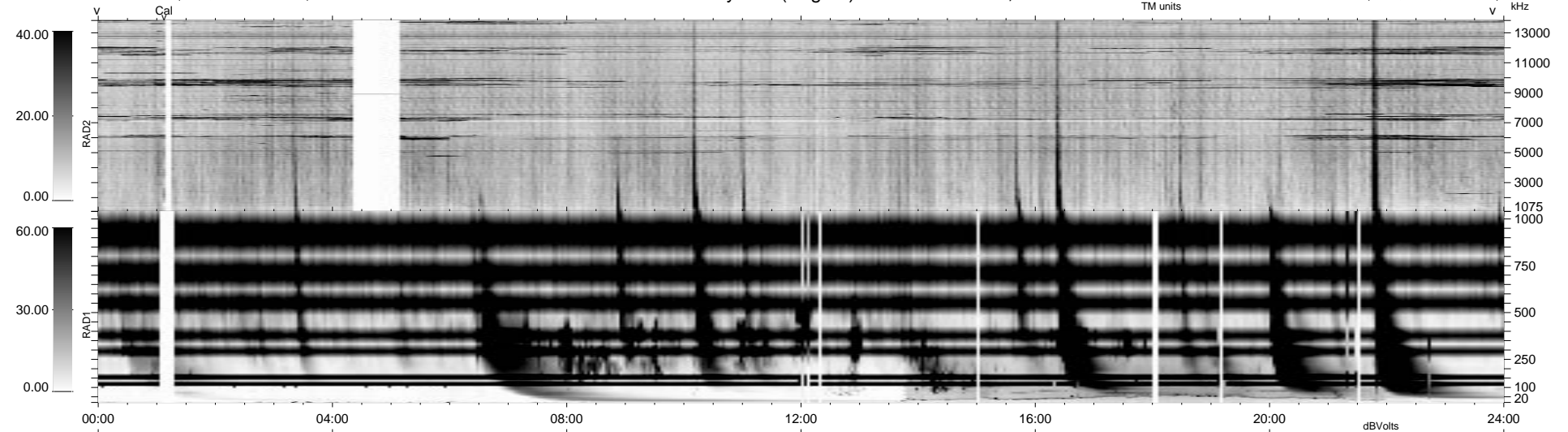
0 bad + 2 good MF/ZMF projected (100%) - 0 missing MFs  
 Avg interval = 180 secs  
 Re = 85.88 (23.10, -82.44, 6.71 GSE)

1.7d VMS-SunOS

LZ version = v01

WIND/WAVES Summary Plot (Page 1) for 31-OCT-2001, DOY = 304

DAILY Wed Sep 10, 2008  
 Re = 89.27 (27.63, -84.59, 7.17 GSE)



```

RAD2
Antenna Ey ..... FLX(157) . LIN(1)
Mode LIN(1)
SUM/SEP SEP
Toggle OFF

RAD1
Antenna Ex
Mode LIS(2/4)
SUM/SEP SUM
Toggle OFF

TNR
Antenna ExEy
Mode A-32
Sweep ACE
  
```