

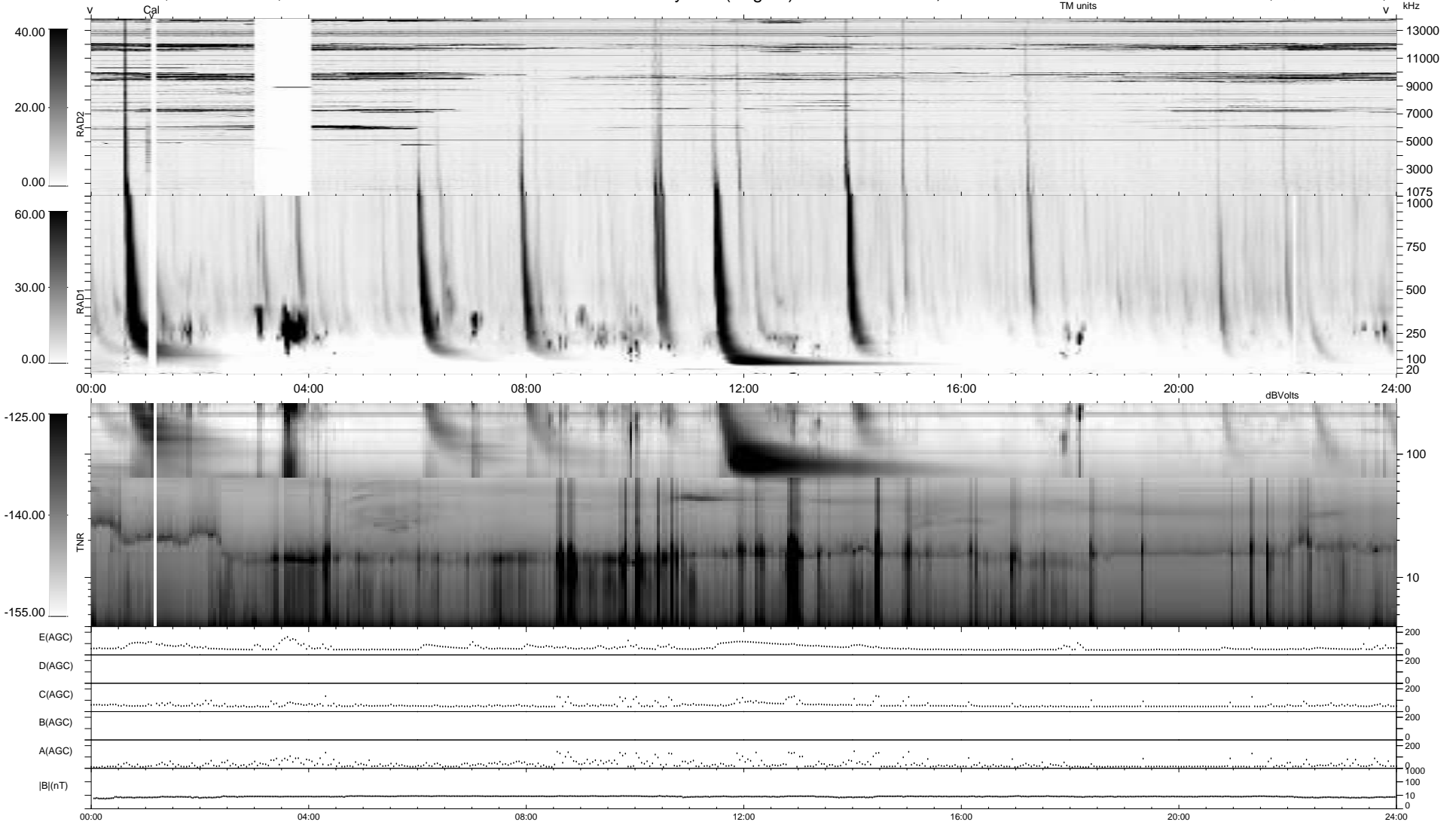
0 bad + 2 good MF/ZMF projected (100%) - 0 missing MFs
 Avg interval = 180 secs
 Re = 58.25 (0.02, -58.14, 3.53 GSE)

1.7d VMS-SunOS

LZ version = v01

WIND/WAVES Summary Plot (Page 1) for 27-OCT-2001, DOY = 300

DAILY Wed Sep 10, 2008
 Re = 67.61 (6.48, -67.15, 4.55 GSE)



```

RAD2
Antenna Ey ..... EIX(69)X(157) LIN(1) .....
Mode LIN(1) .....
SUM/SEP SEP .....
Toggle OFF .....

RAD1
Antenna Ex .....
Mode LIS(2,3) .....
SUM/SEP SUM .....
Toggle OFF .....

TNR
Antenna ExEy .....
Mode A-32 .....
Sweep ACE .....
  
```