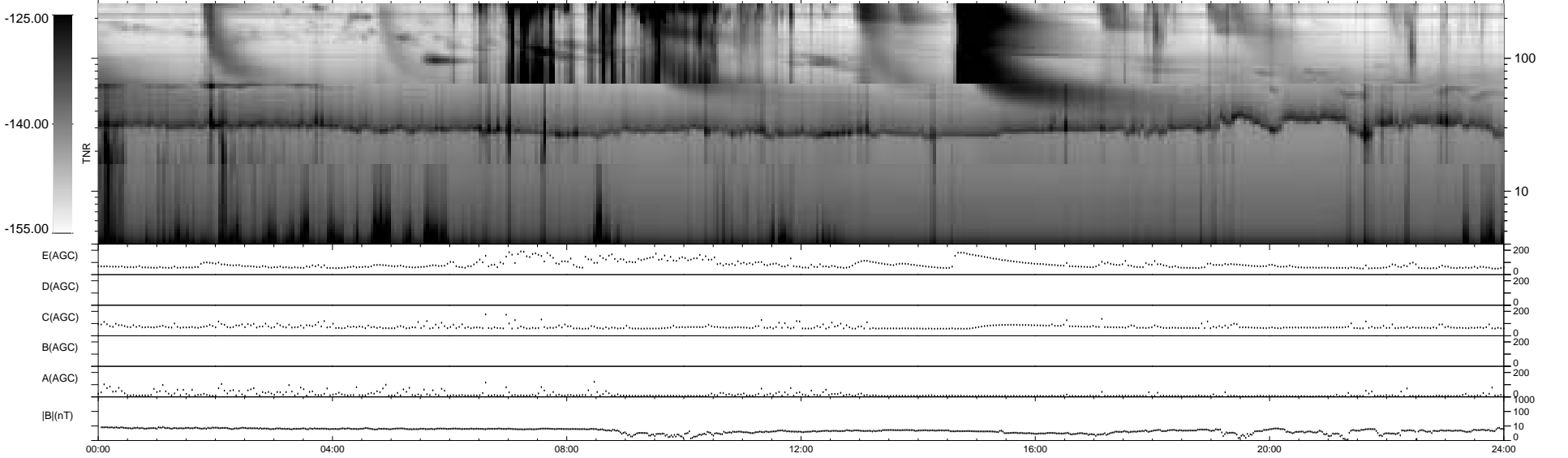
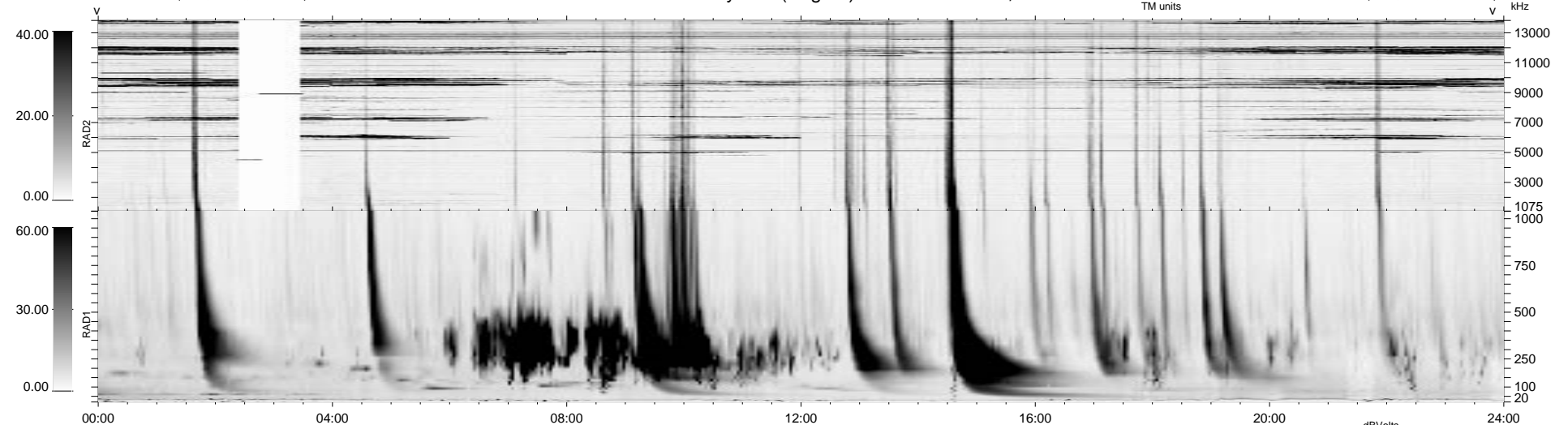


0 bad + 2 good MF/ZMF projected (100%) - 0 missing MFs
 Avg interval = 180 secs
 Re = 46.44 (-6.80, -45.88, 2.29 GSE)

1.7d VMS-SunOS LZ version = v01
 DAILY Wed Sep 10, 2008
 Re = 58.17 (-0.03, -58.07, 3.52 GSE)

WIND/WAVES Summary Plot (Page 1) for 26-OCT-2001, DOY = 299



RAD2
 Antenna Ey
 Mode LIN(1) FIX(6)X(157), LIN(1)
 SUM/SEP SEP
 Toggle OFF
 RAD1
 Antenna Ex
 Mode LIS(2,3)
 SUM/SEP SUM
 Toggle OFF
 TNR
 Antenna ExEy
 Mode A-32
 Sweep ACE