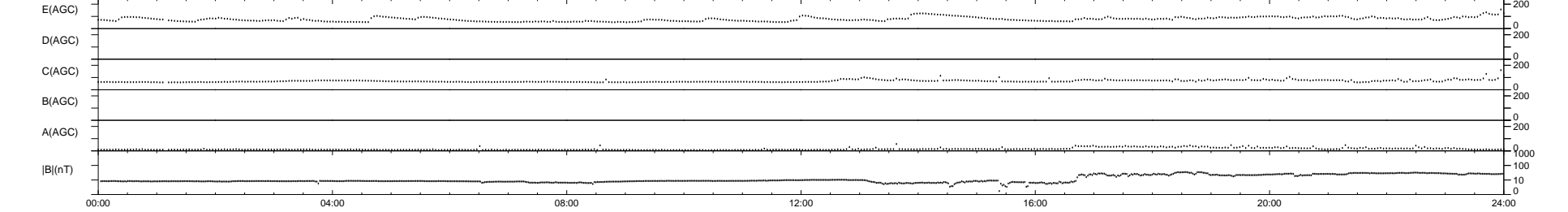
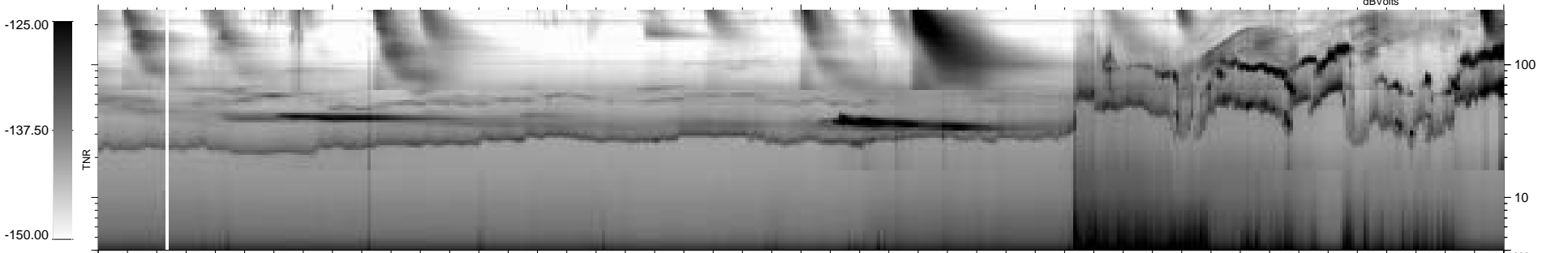
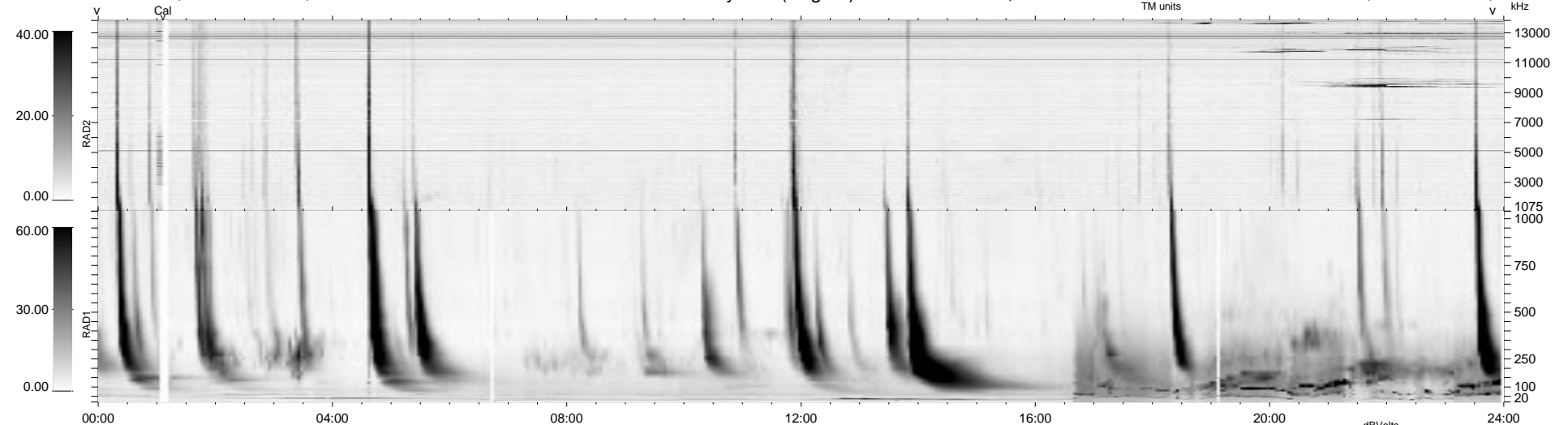


0 bad + 2 good MF/ZMF projected (100%) - 0 missing MFs  
 Avg interval = 180 secs  
 Re = 53.14 (50.08, -17.21, 4.39 GSE)

1.7d VMS-SunOS LZ version = v01  
 DAILY Wed Sep 10, 2008  
 Re = 40.08 (39.57, -5.60, 3.01 GSE)

WIND/WAVES Summary Plot (Page 1) for 21-OCT-2001, DOY = 294



RAD2  
 Antenna Ey  
 Mode LIN(1)  
 SUM/SEP SEP  
 Toggle OFF

RAD1  
 Antenna Ex  
 Mode LIS(2,3)  
 SUM/SEP SUM  
 Toggle OFF

TNR  
 Antenna ExEy  
 Mode A-32  
 Sweep ACE