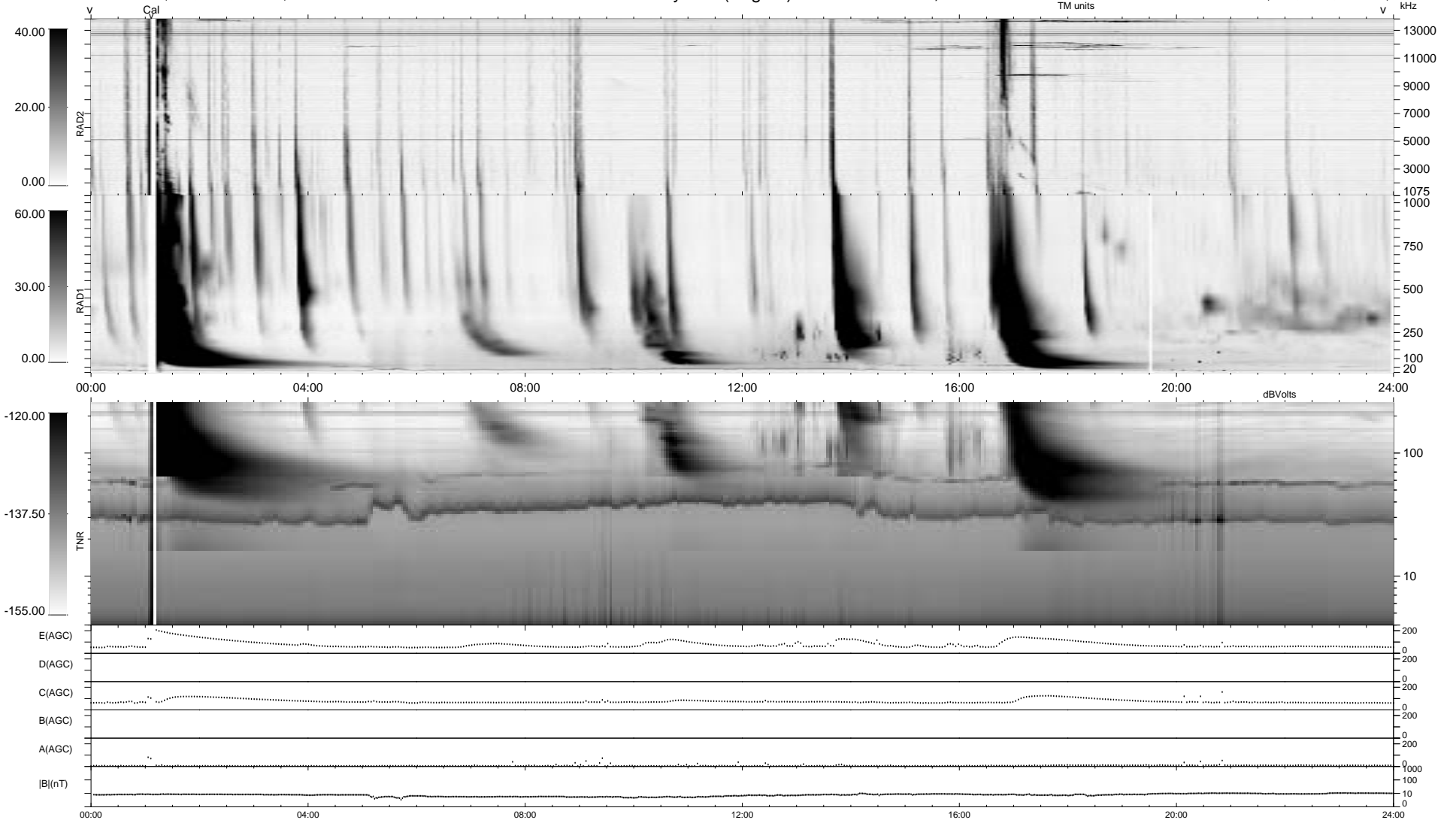


0 bad + 2 good MF/ZMF projected (100%) - 0 missing MFs  
 Avg interval = 180 secs  
 Re = 71.85 (61.87, -36.01, 6.23 GSE)

1.7d VMS-SunOS LZ version = v02  
 DAILY Wed Sep 10, 2008  
 Re = 63.60 (57.15, -27.39, 5.44 GSE)

WIND/WAVES Summary Plot (Page 1) for 19-OCT-2001, DOY = 292



```

RAD2
Antenna Ey .....
Mode LIN(1) .....
SUM/SEP SEP .....
Toggle OFF .....

RAD1
Antenna Ex .....
Mode LIS(2,3) .....
SUM/SEP SUM .....
Toggle OFF .....

TNR
Antenna ExEy .....
Mode A-32 .....
Sweep ACE .....
  
```