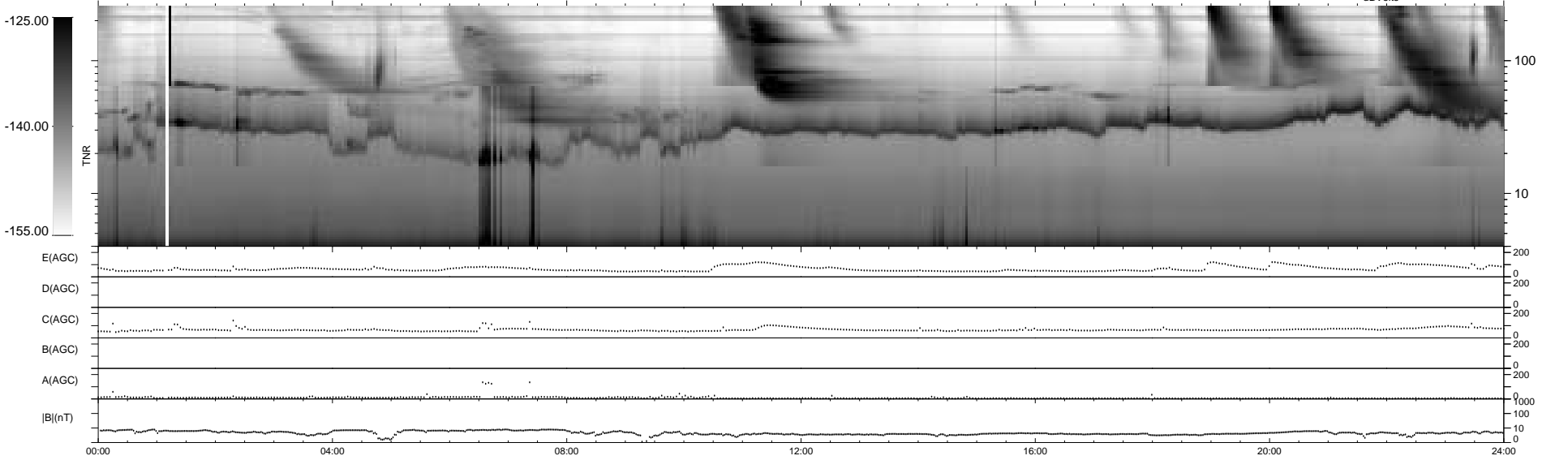
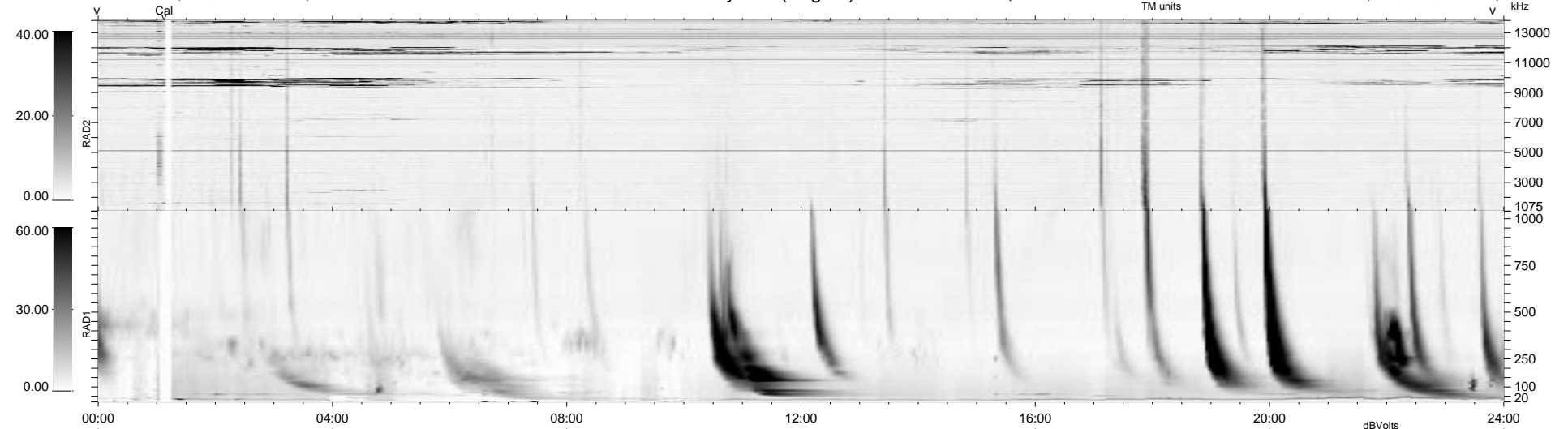


0 bad + 2 good MF/ZMF projected (100%) - 0 missing MFs
 Avg interval = 180 secs
 Re = 89.80 (67.19, -59.09, 7.64 GSE)

1.7d VMS-SunOS LZ version = v01
 DAILY Wed Sep 10, 2008
 Re = 87.36 (67.50, -54.94, 7.51 GSE)

WIND/WAVES Summary Plot (Page 1) for 15-OCT-2001, DOY = 288



```

RAD2
Antenna Ey .....
Mode LIN(1) .....
SUM/SEP SEP .....
Toggle OFF .....

RAD1
Antenna Ex .....
Mode LIS(2,3) .....
SUM/SEP SUM .....
Toggle OFF .....

TNR
Antenna ExEy .....
Mode A-32 .....
Sweep ACE .....
  
```