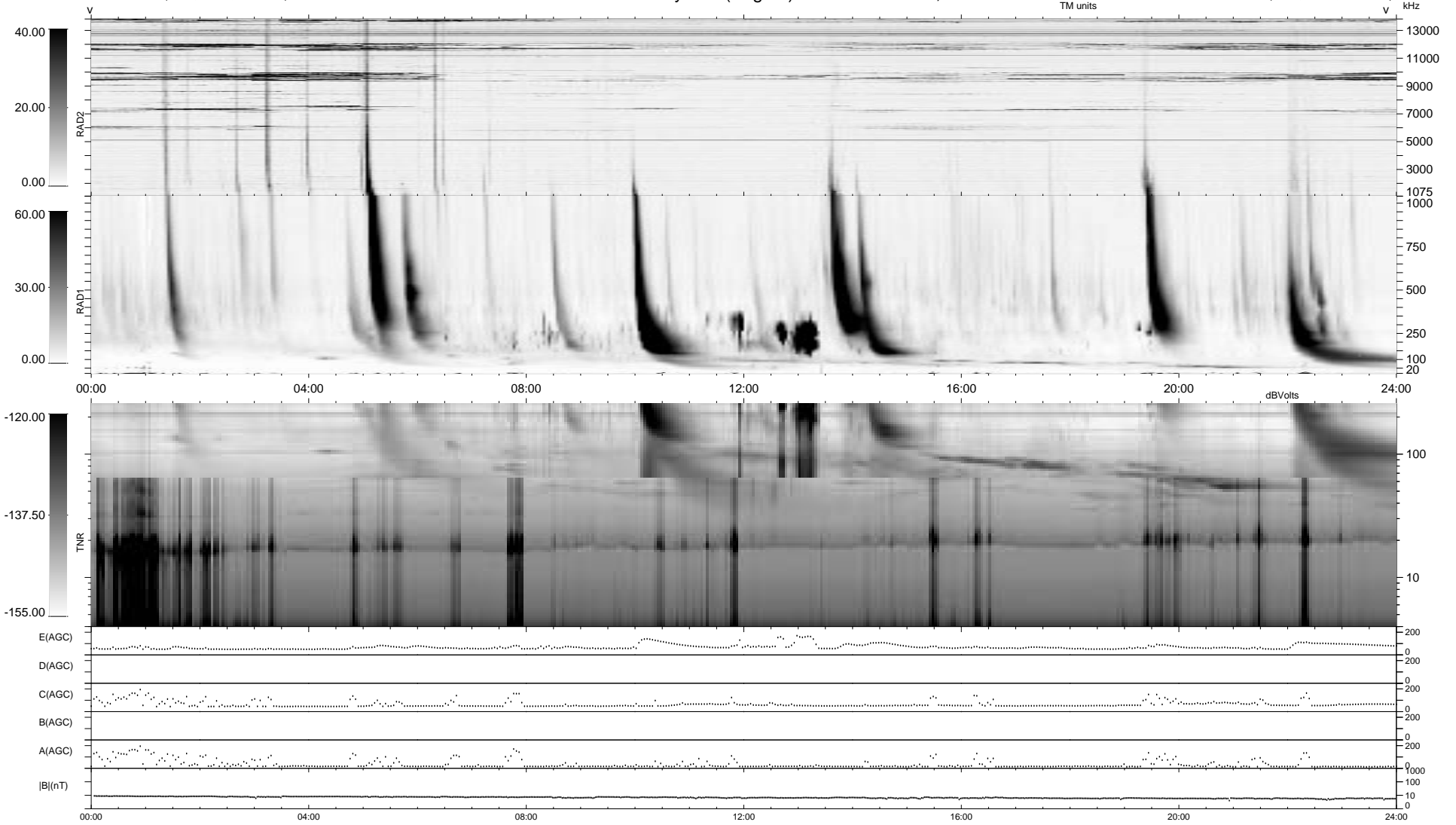


0 bad + 2 good MF/ZMF projected (100%) - 0 missing MFs
 Avg interval = 180 secs
 Re = 82.84 (51.07, -64.92, 6.32 GSE)

1.7d VMS-SunOS LZ version = v01
 DAILY Wed Sep 10, 2008
 Re = 86.83 (56.26, -65.78, 6.85 GSE)

WIND/WAVES Summary Plot (Page 1) for 10-OCT-2001, DOY = 283



RAD2
 Antenna Ey
 Mode LIN(1)
 SUM/SEP SEP
 Toggle OFF

RAD1
 Antenna Ex
 Mode LIS(2,3)
 SUM/SEP SUM
 Toggle OFF

TNR
 Antenna ExEy
 Mode A-32
 Sweep ACE