

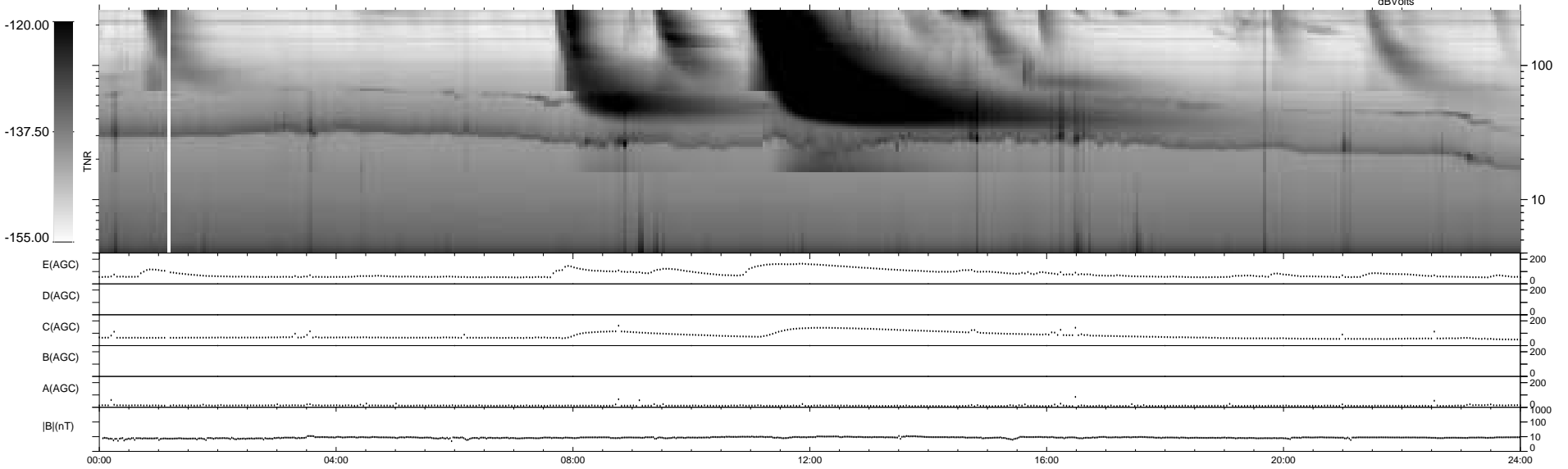
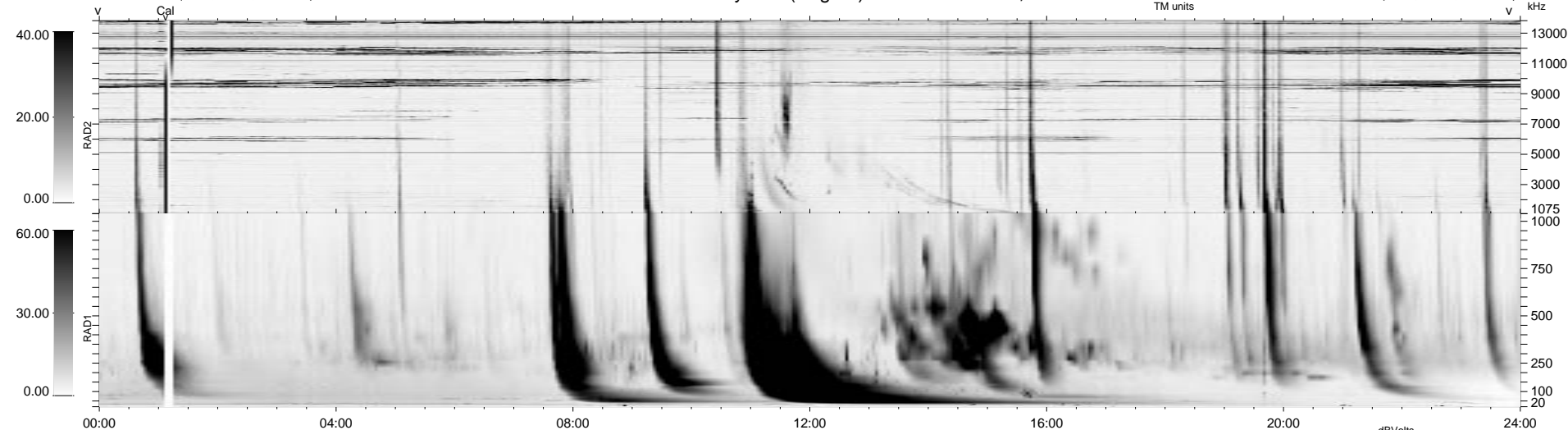
0 bad + 2 good MF/ZMF projected (100%) - 0 missing MFs
 Avg interval = 180 secs
 Re = 77.41 (44.77, -62.90, 5.66 GSE)

1.7d VMS-SunOS LZ version = v01

DAILY Wed Sep 10, 2008

Re = 82.81 (51.03, -64.91, 6.32 GSE)

WIND/WAVES Summary Plot (Page 1) for 09-OCT-2001, DOY = 282



```

RAD2
Antenna Ey .....
Mode LIN(1) .....
SUM/SEP SEP .....
Toggle OFF .....

RAD1
Antenna Ex .....
Mode LIS(2,3) .....
SUM/SEP SUM .....
Toggle OFF .....

TNR
Antenna ExEy .....
Mode A-32 .....
Sweep ACE .....
  
```