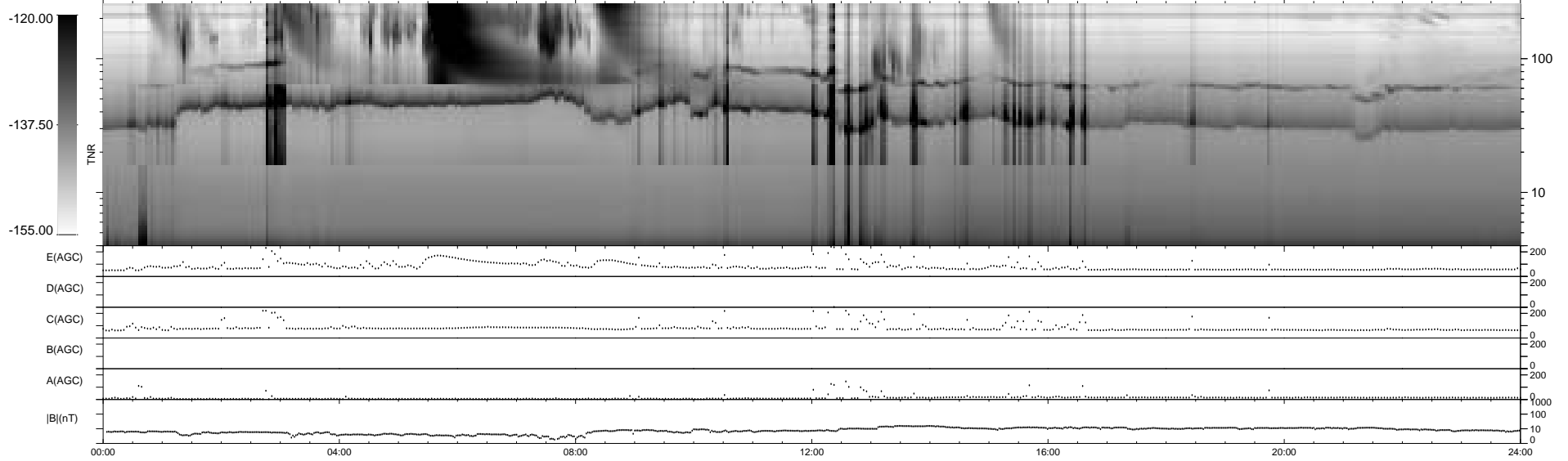
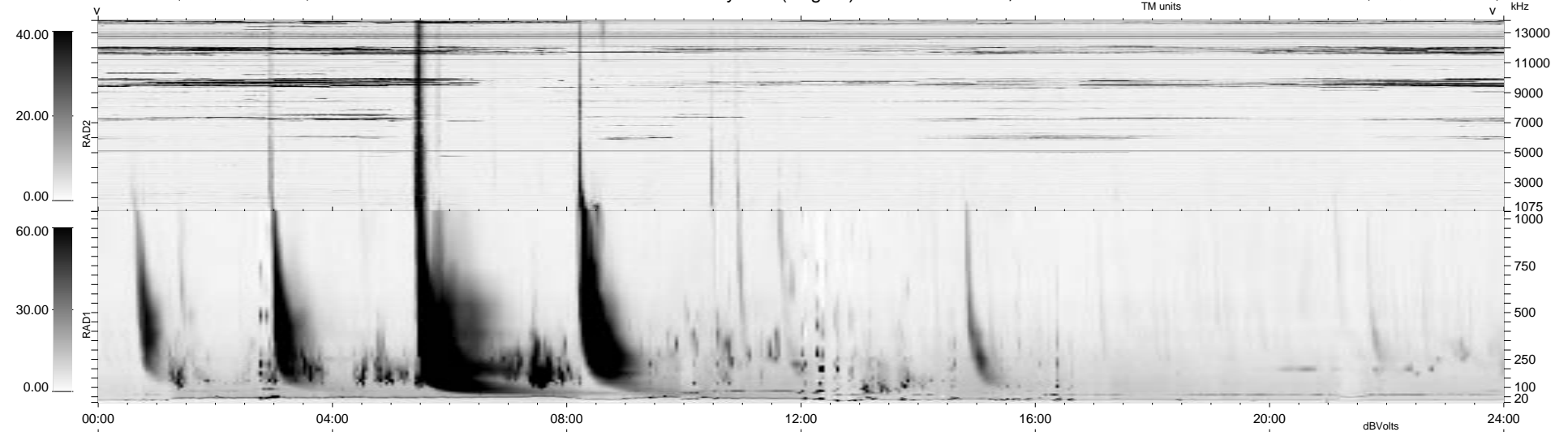


0 bad + 2 good MF/ZMF projected (100%) - 0 missing MFs  
 Avg interval = 180 secs  
 Re = - 70.38 (37.27, -59.50, 4.86 GSE)

1.7d VMS-SunOS LZ version = v01  
 DAILY Wed Sep 10, 2008  
 Re = 77.37 (44.72, -62.88, 5.66 GSE)

WIND/WAVES Summary Plot (Page 1) for 08-OCT-2001, DOY = 281



RAD2  
 Antenna Ey .....  
 Mode LIN(1) .....  
 SUM/SEP SEP .....  
 Toggle OFF .....  
 RAD1  
 Antenna Ex .....  
 Mode LIS(2,3) .....  
 SUM/SEP SUM .....  
 Toggle OFF .....  
 TNR  
 Antenna ExEy .....  
 Mode A-32 .....  
 Sweep ACE .....