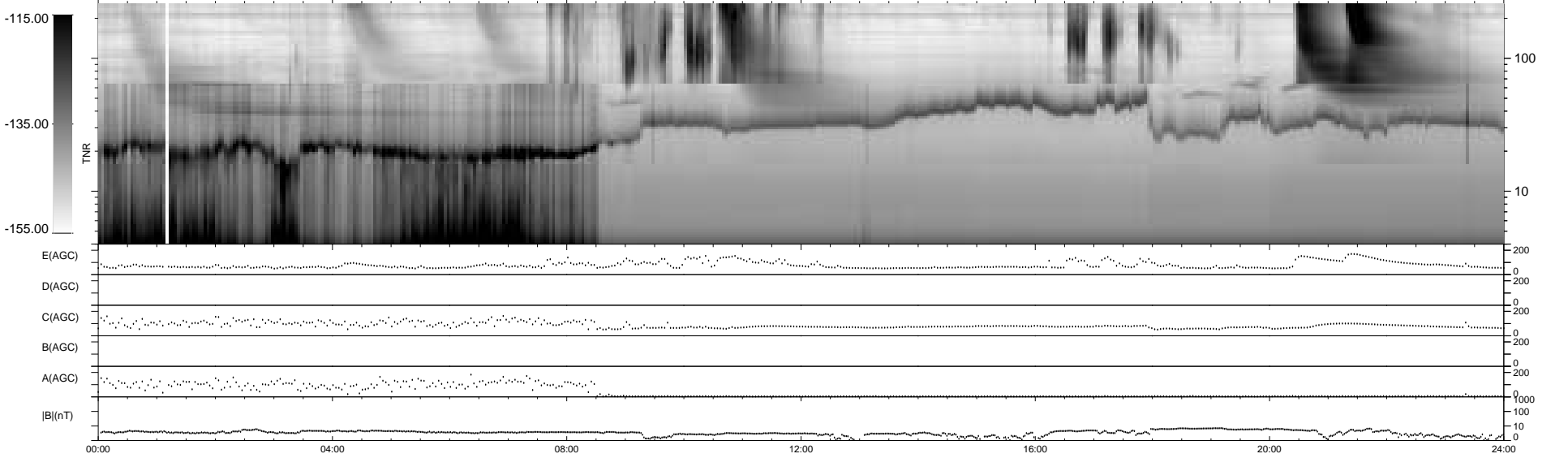
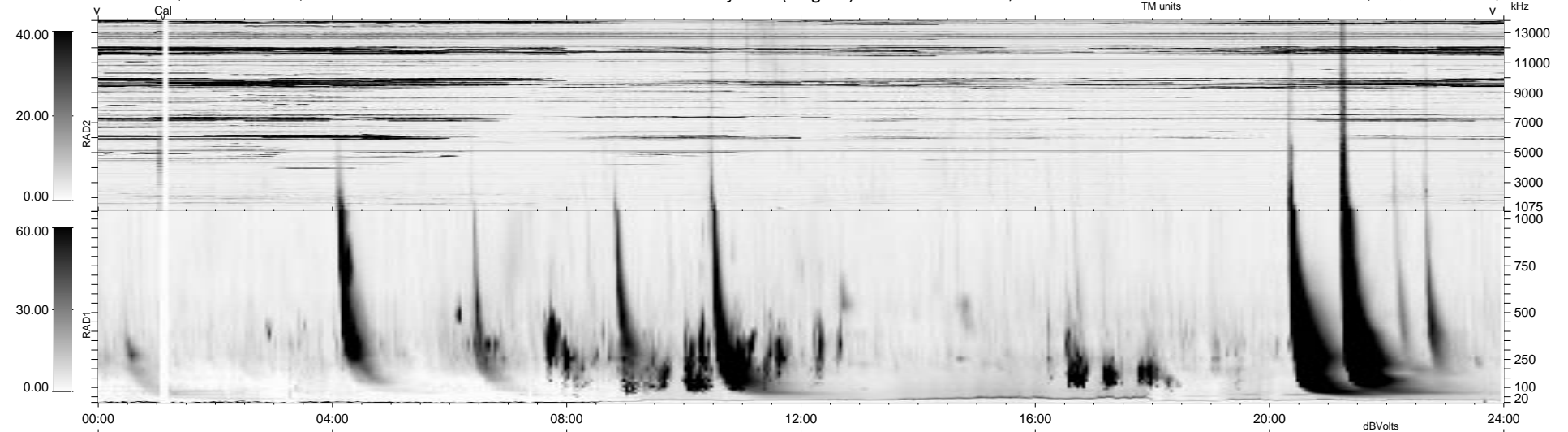


0 bad + 2 good MF/ZMF projected (100%) - 0 missing MFs
 Avg interval = 180 secs
 Re = 35.54 (5.57, -35.08, 1.30 GSE)

1.7d VMS-SunOS LZ version = v01
 DAILY Wed Sep 10, 2008
 Re = 50.09 (17.87, -46.71, 2.71 GSE)

WIND/WAVES Summary Plot (Page 1) for 05-OCT-2001, DOY = 278



E(AGC) 0 200
 D(AGC) 0 200
 C(AGC) 0 200
 B(AGC) 0 200
 A(AGC) 0 200
 |B|(nT) 0 1000 10 0

RAD2
 Antenna Ey
 Mode LIN(1)
 SUM/SEP SEP
 Toggle OFF

RAD1
 Antenna Ex
 Mode LIS(2,3)
 SUM/SEP SUM
 Toggle OFF

TNR
 Antenna ExEy
 Mode A-32
 Sweep ACE