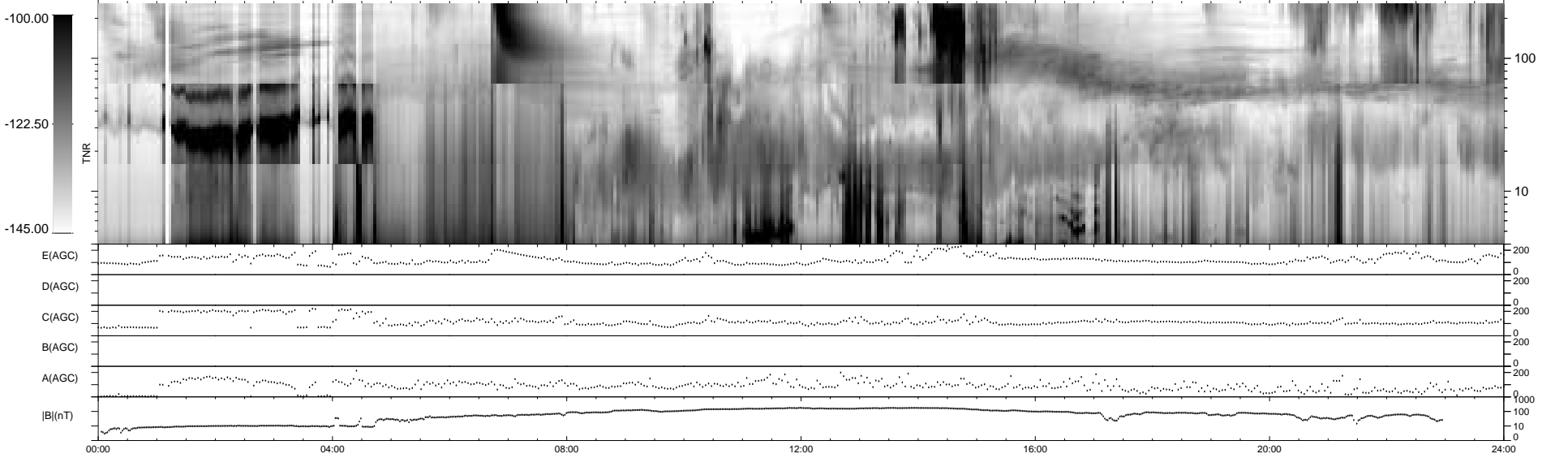
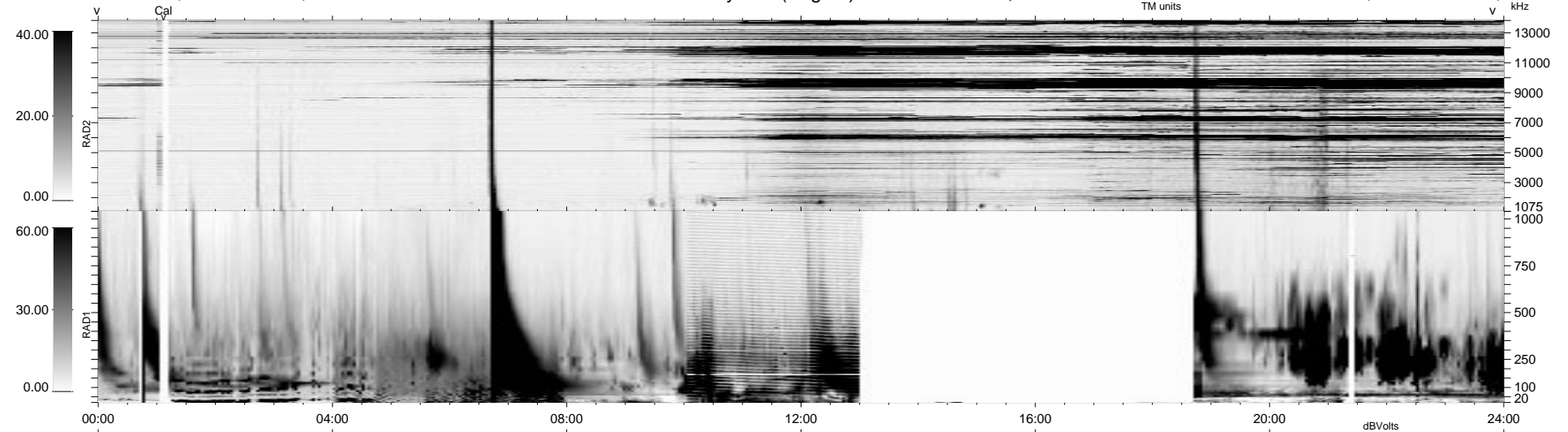


0 bad + 2 good MF/ZMF projected (100%) - 0 missing MFs
 Avg interval = 180 secs
 Re = 19.22 (14.50, 12.57, 1.03 GSE)

1.7d VMS-SunOS LZ version = v02
 DAILY Wed Sep 10, 2008
 Re = 15.24 (-7.97, -12.99, -0.42 GSE)

WIND/WAVES Summary Plot (Page 1) for 03-OCT-2001, DOY = 276



```

RAD2
Antenna Ey .....
Mode LIN(1) .....
SUM/SEP SEP .....
Toggle OFF .....

RAD1
Antenna Ex .....
Mode LIS(2,8) ..... LIS(1,10) ..... LIS(2,8) .....
SUM/SEP SUM ..... SEP ..... SUM .....
Toggle OFF .....

TNR
Antenna ExEy .....
Mode A-32 .....
Sweep ACE .....
  
```