

0 bad + 2 good MF/ZMF projected (100%) - 0 missing MFs
 Avg interval = 180 secs
 Re = 38.23 (37.38, 7.33, 3.18 GSE)

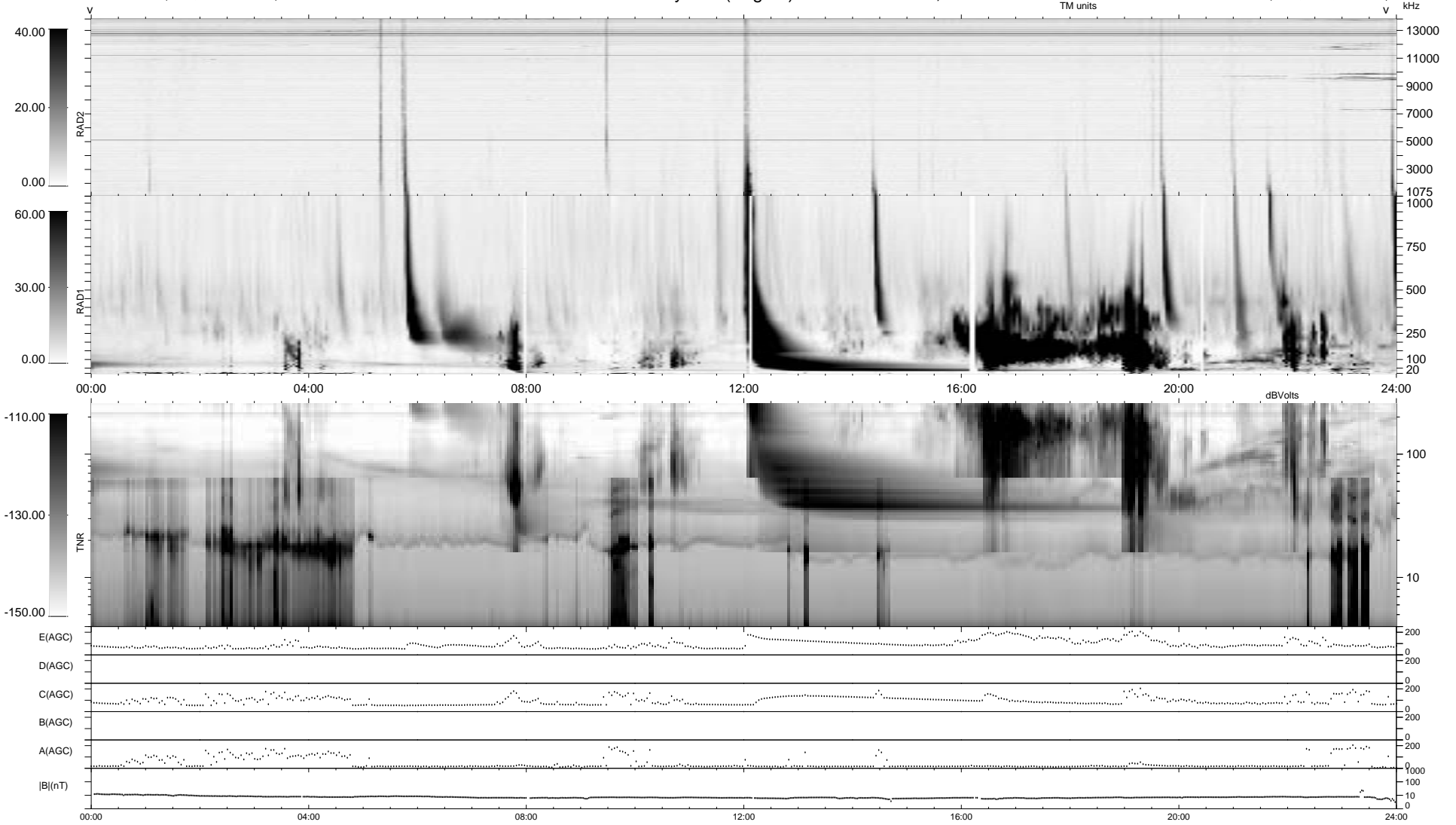
1.7d VMS-SunOS

LZ version = v02

WIND/WAVES Summary Plot (Page 1) for 02-OCT-2001, DOY = 275

DAILY Wed Sep 10, 2008

Re = 19.33 (14.65, 12.56, 1.04 GSE)



RAD2
 Antenna Ey
 Mode LIN(1)
 SUM/SEP SEP
 Toggle OFF

RAD1
 Antenna Ex
 Mode LIS(2,3)
 SUM/SEP SUM
 Toggle OFF

TNR
 Antenna ExEy
 Mode A-32
 Sweep ACE