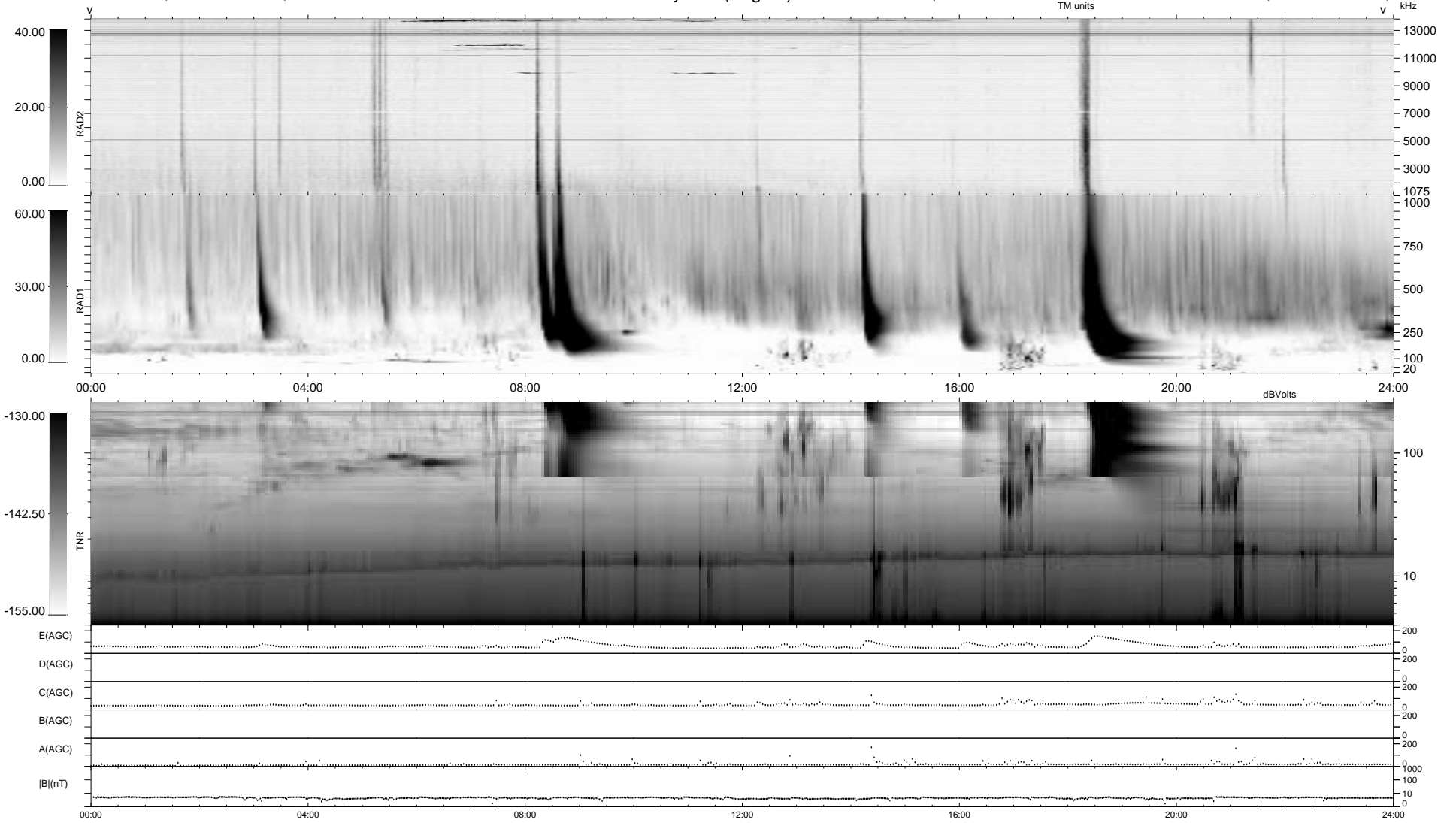


0 bad + 2 good MF/ZMF projected (100%) - 0 missing MFs
 Avg interval = 180 secs
 Re = - 79.42 (77.07, -17.84, 7.10 GSE)

1.7d VMS-SunOS LZ version = v02
 DAILY Wed Sep 10, 2008
 Re = 72.29 (70.92, -12.40, 6.50 GSE)

WIND/WAVES Summary Plot (Page 1) for 28-SEP-2001, DOY = 271



```

RAD2
Antenna Ey .....
Mode LIN(1) .....
SUM/SEP SEP .....
Toggle OFF .....

RAD1
Antenna Ex .....
Mode LIS(2.3) .....
SUM/SEP SUM .....
Toggle OFF .....

TNR
Antenna ExEy .....
Mode A-32 .....
Sweep ACE .....
  
```