

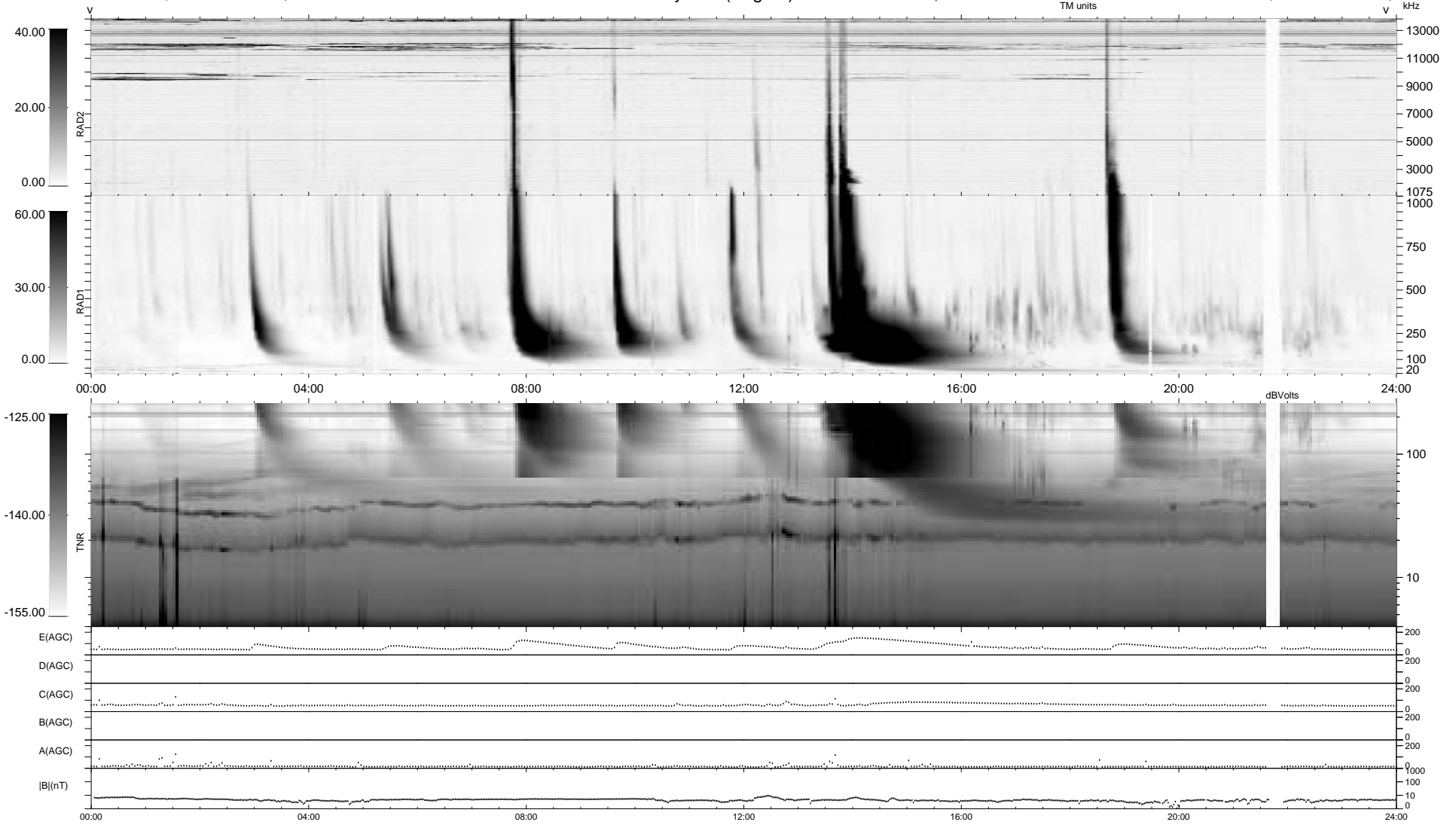
0 bad + 2 good MF/ZMF projected (100%) - 0 missing MFs  
 Avg interval = 180 secs  
 Re = 75.93 (61.16, -44.76, 4.68 GSE)

1.7d VMS-SunOS

LZ version = v01

WIND/WAVES Summary Plot (Page 1) for 16-SEP-2001, DOY = 259

DAILY Wed Sep 10, 2008  
 Re = 82.60 (68.71, -45.52, 5.48 GSE)



```

RAD2
Antenna Ey .....
Mode LIN(1) .....
SUM/SEP SEP .....
Toggle OFF .....

RAD1
Antenna .....
Mode .....
SUM/SEP .....
Toggle .....

TNR
Antenna ExEy .....
Mode A-32 .....
Sweep ACE .....
  
```