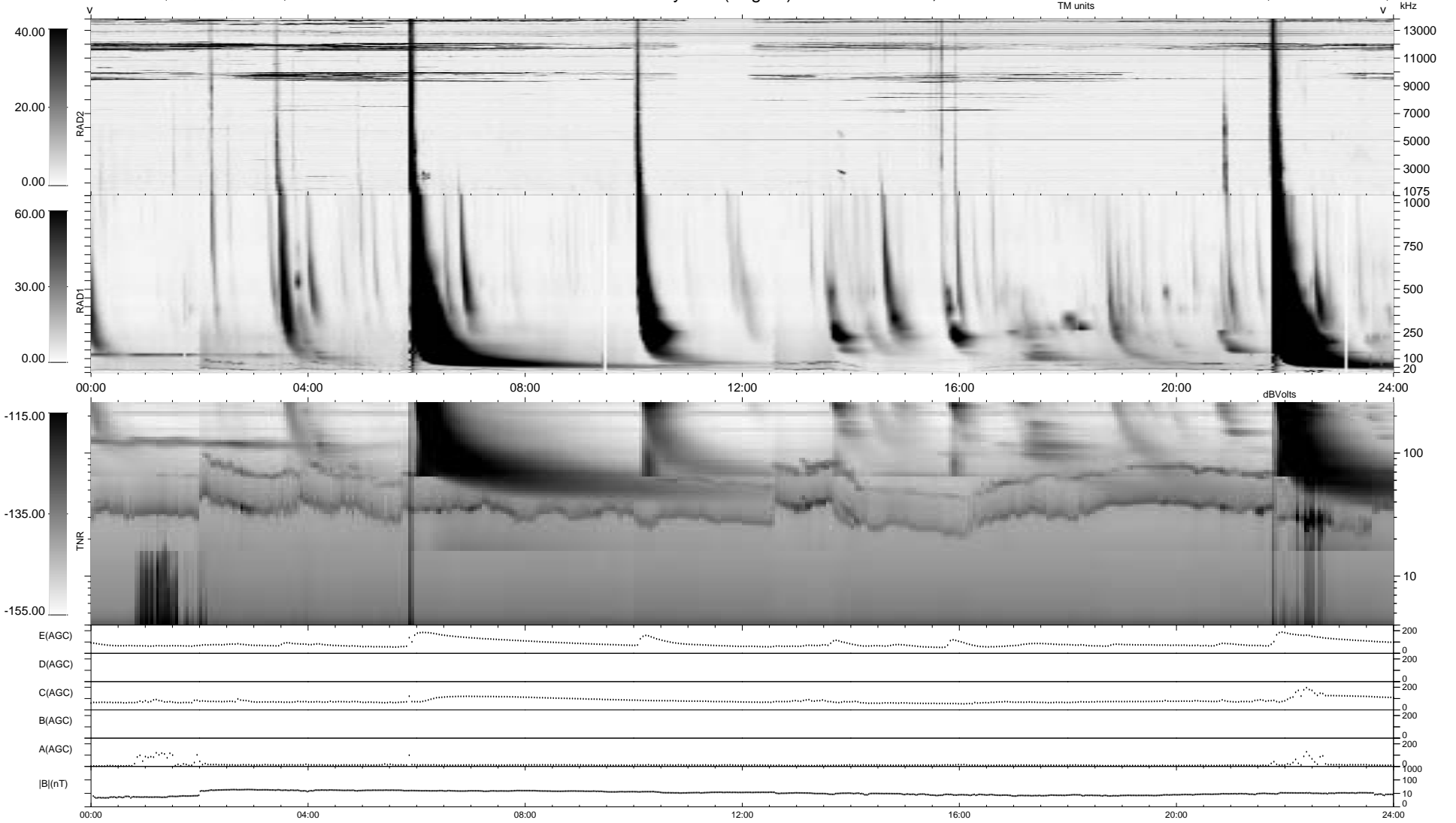


0 bad + 2 good MF/ZMF projected (100%) - 0 missing MFs  
 Avg interval = 180 secs  
 Re = - 54.72 (38.56, -38.75, 2.56 GSE)

1.7d VMS-SunOS LZ version = v02  
 DAILY Wed Sep 10, 2008  
 Re = 67.30 (51.76, -42.85, 3.74 GSE)

### WIND/WAVES Summary Plot (Page 1) for 14-SEP-2001, DOY = 257



```

RAD2
Antenna Ey .....
Mode LIN(1) .....
SUM/SEP SEP .....
Toggle OFF .....

RAD1
Antenna Ex .....
Mode LIS(2,3) .....
SUM/SEP SUM .....
Toggle OFF .....

TNR
Antenna ExEy .....
Mode A-32 .....
Sweep ACE .....
  
```