

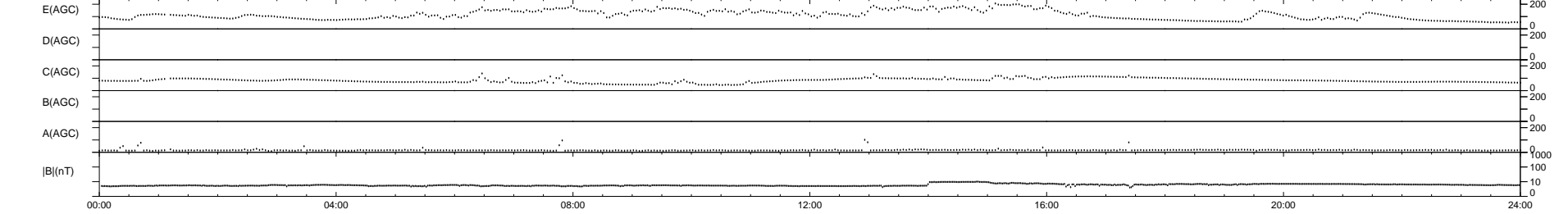
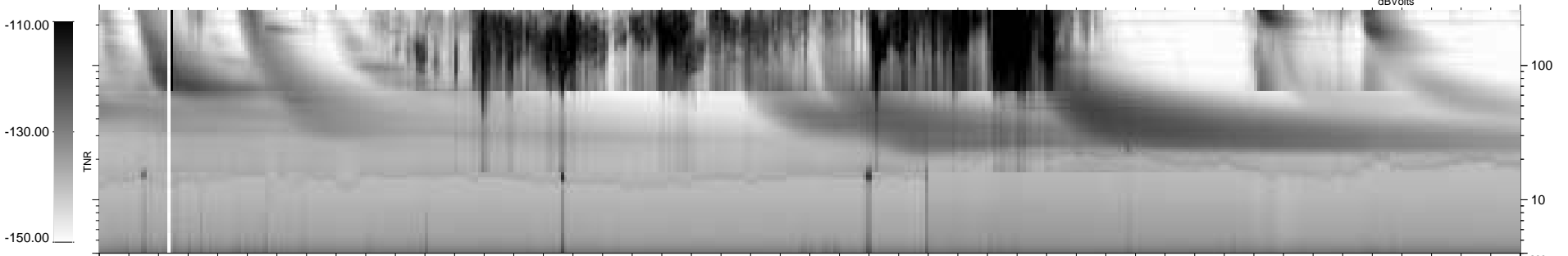
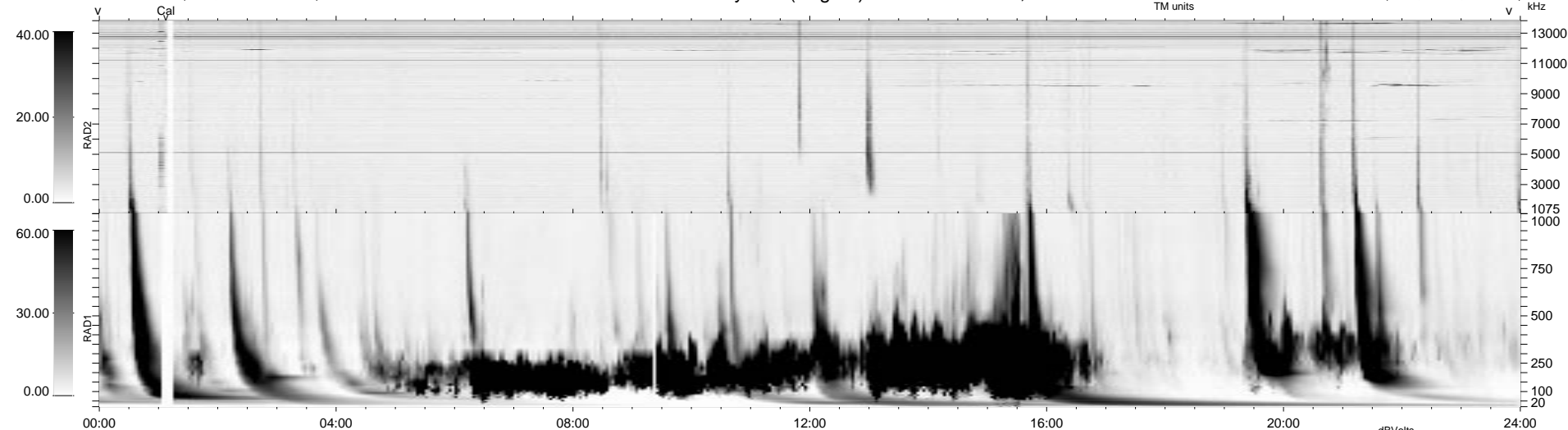
0 bad + 2 good MF/ZMF projected (100%) - 0 missing MFs
 Avg interval = 180 secs
 Re = - 154.40 (26.89, 151.88, 7.01 GSE)

1.7d VMS-SunOS LZ version = v01

DAILY Wed Sep 10, 2008

Re = 146.41 (23.27, 144.41, 6.33 GSE)

WIND/WAVES Summary Plot (Page 1) for 30-AUG-2001, DOY = 242



```

RAD2
Antenna Ey .....
Mode LIN(1) .....
SUM/SEP SEP .....
Toggle OFF .....

RAD1
Antenna Ex .....
Mode LIS(2,3) .....
SUM/SEP SUM .....
Toggle OFF .....

TNR
Antenna ExEy .....
Mode A-32 .....
Sweep ACE .....
  
```