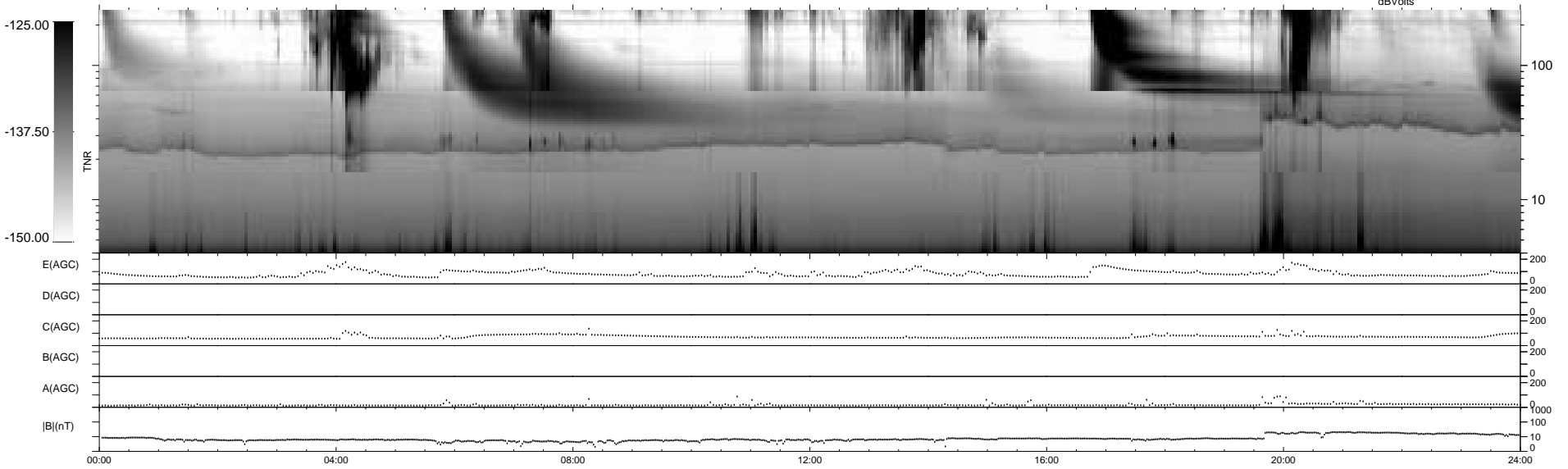
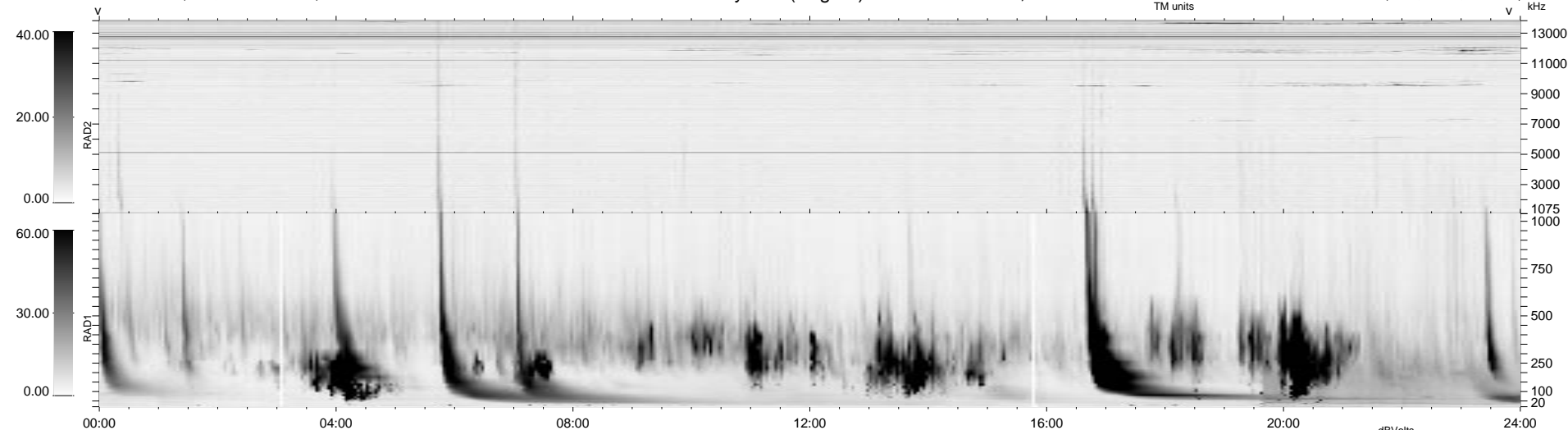


0 bad + 2 good MF/ZMF projected (100%) - 0 missing MFs
 Avg interval = 180 secs
 Re = - 176.22 (36.19, 172.23, 8.92 GSE)

1.7d VMS-SunOS LZ version = v02

WIND/WAVES Summary Plot (Page 1) for 27-AUG-2001, DOY = 239

DAILY Wed Sep 10, 2008
 Re = 169.36 (33.37, 165.83, 8.31 GSE)



```

RAD2
Antenna Ey .....
Mode LIN(1) .....
SUM/SEP SEP .....
Toggle OFF .....

RAD1
Antenna Ex .....
Mode LIS(2,3) .....
SUM/SEP SUM .....
Toggle OFF .....

TNR
Antenna ExEy .....
Mode A-32 .....
Sweep ACE .....
  
```