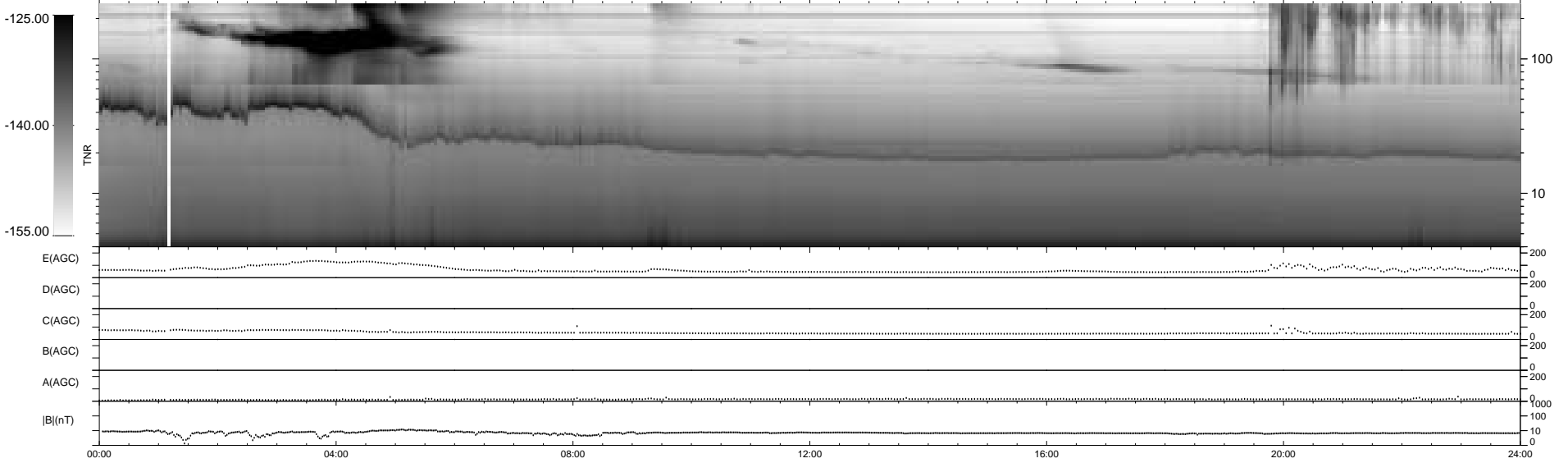
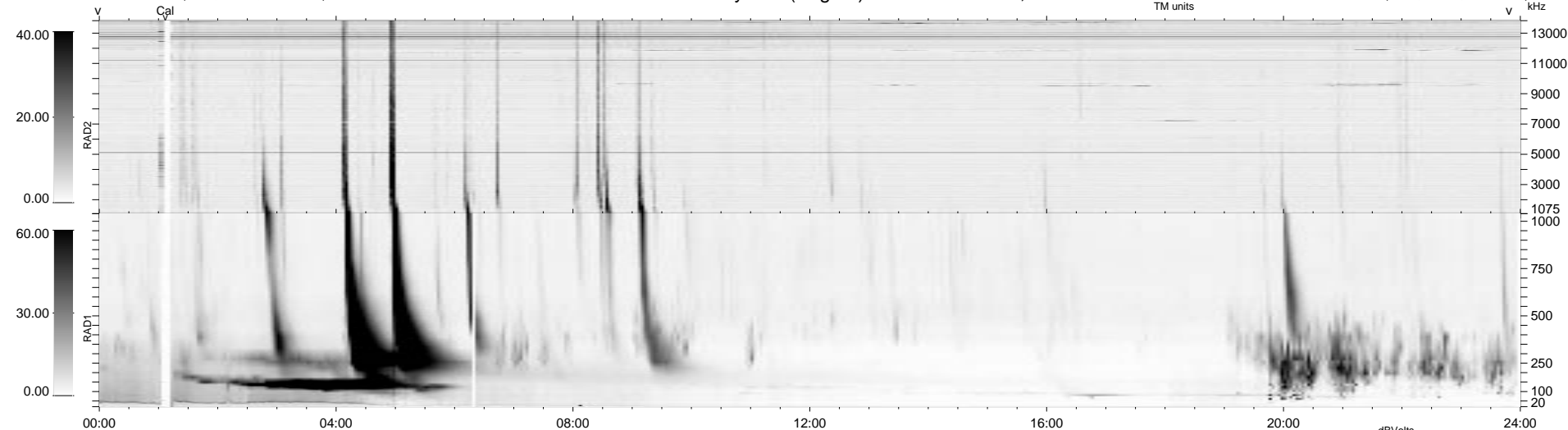


0 bad + 2 good MF/ZMF projected (100%) - 0 missing MFs
 Avg interval = 180 secs
 Re = - 250.52 (52.39, 244.45, 16.12 GSE)

1.7d VMS-SunOS LZ version = v01
 DAILY Wed Sep 10, 2008
 Re = 247.86 (52.63, 241.69, 15.84 GSE)

WIND/WAVES Summary Plot (Page 1) for 10-AUG-2001, DOY = 222



RAD2
 Antenna Ey
 Mode LIN(1)
 SUM/SEP SEP
 Toggle OFF
 RAD1
 Antenna Ex
 Mode LIS(2,3)
 SUM/SEP SUM
 Toggle OFF
 TNR
 Antenna ExEy
 Mode A-32
 Sweep ACE