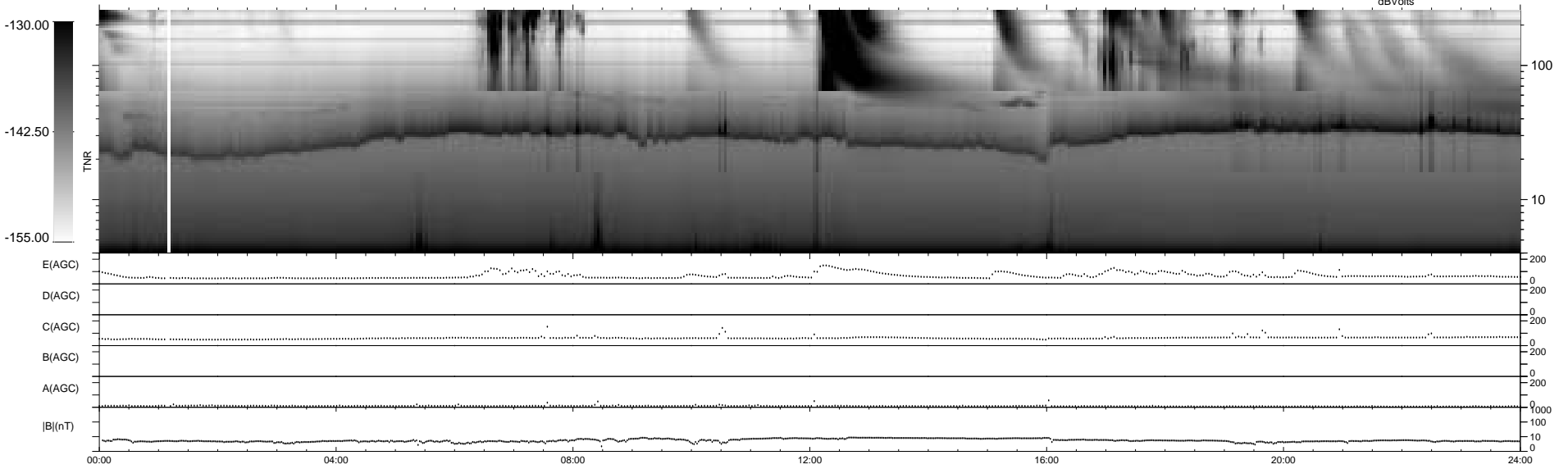
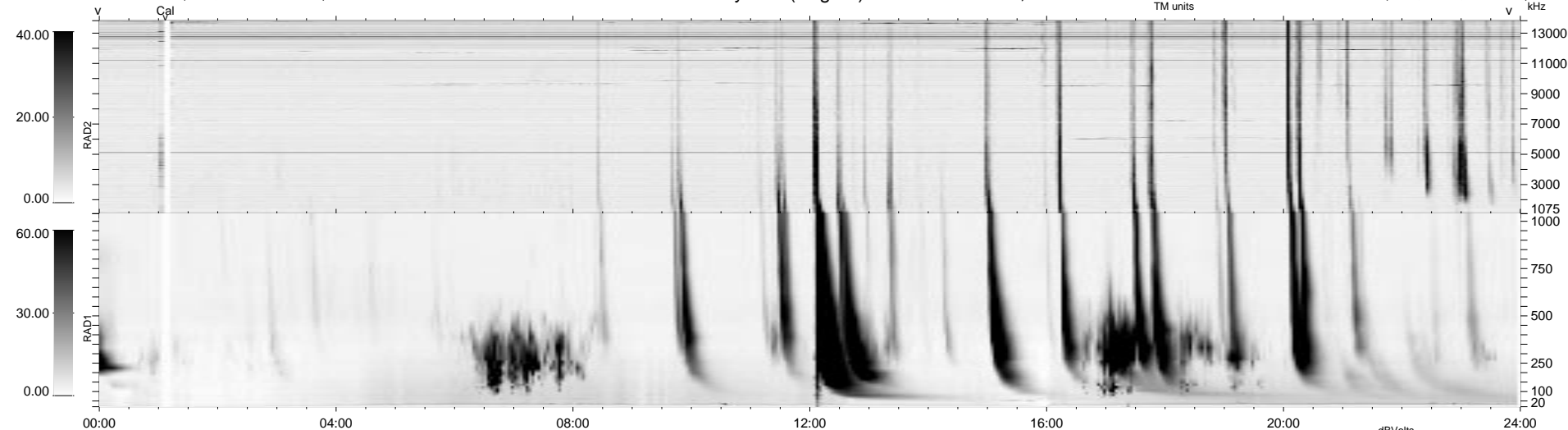


0 bad + 2 good MF/ZMF projected (100%) - 0 missing MFs
 Avg interval = 180 secs
 Re = 265.85 (48.87, 260.70, 17.89 GSE)

1.7d VMS-SunOS LZ version = v02
 DAILY Tue Sep 9, 2008
 Re = 264.56 (49.38, 259.31, 17.72 GSE)

WIND/WAVES Summary Plot (Page 1) for 02-AUG-2001, DOY = 214



RAD2
 Antenna Ey
 Mode LIN(1)
 SUM/SEP SEP
 Toggle OFF
 RAD1
 Antenna Ex
 Mode LIS(2,3)
 SUM/SEP SUM
 Toggle OFF
 TNR
 Antenna ExEy
 Mode A-32
 Sweep ACE