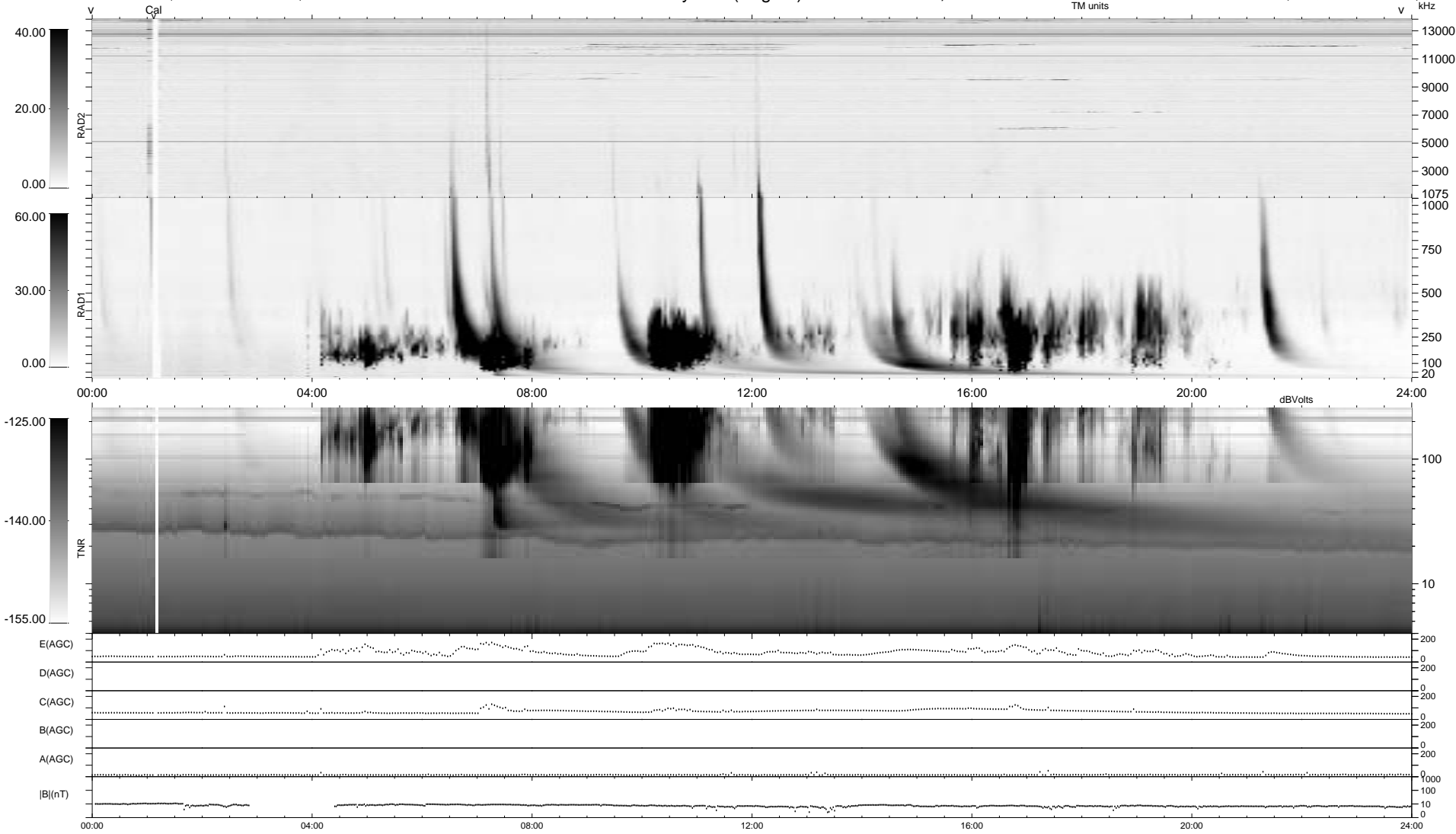


0 bad + 2 good MF/ZMF projected (100%) - 0 missing MFs
 Avg interval = 180 secs
 Re = -268.99 (44.93, 264.55, 18.65 GSE)

1.7d VMS-SunOS LZ version = v01
 DAILY Tue Sep 9, 2008
 Re = 269.33 (45.40, 264.82, 18.62 GSE)

WIND/WAVES Summary Plot (Page 1) for 25-JUL-2001, DOY = 206



```

RAD2
Antenna Ey
Mode LIN(1)
SUM/SEP SEP
Toggle OFF

RAD1
Antenna Ex
Mode LIS(2,3)
SUM/SEP SUM
Toggle OFF

TNR
Antenna ExEy
Mode A-32
Sweep ACE
  
```