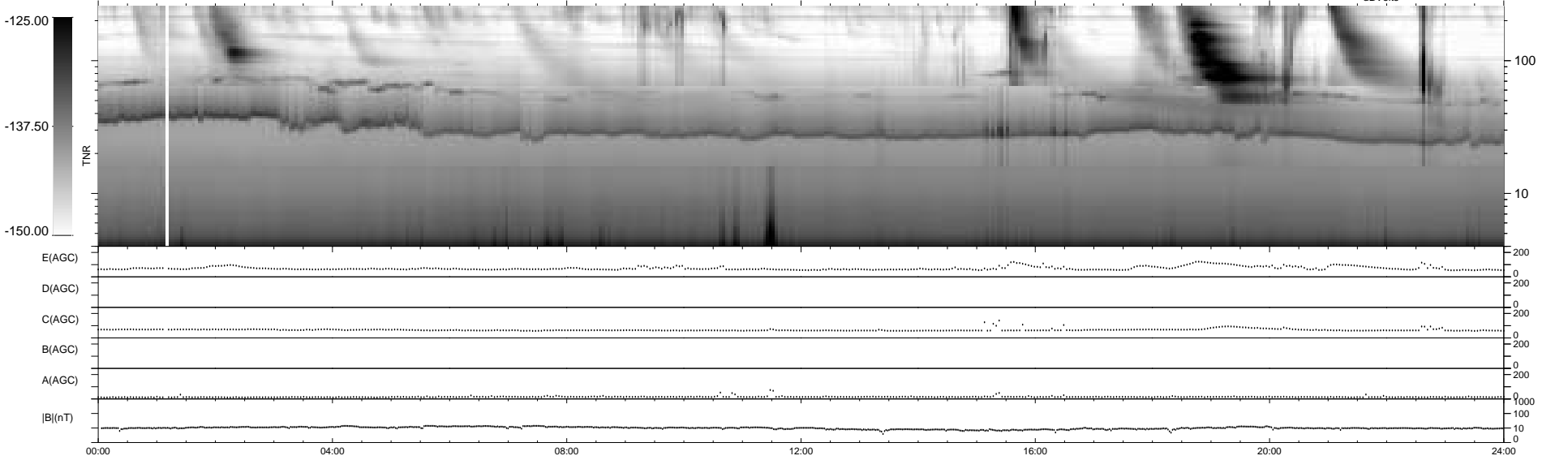
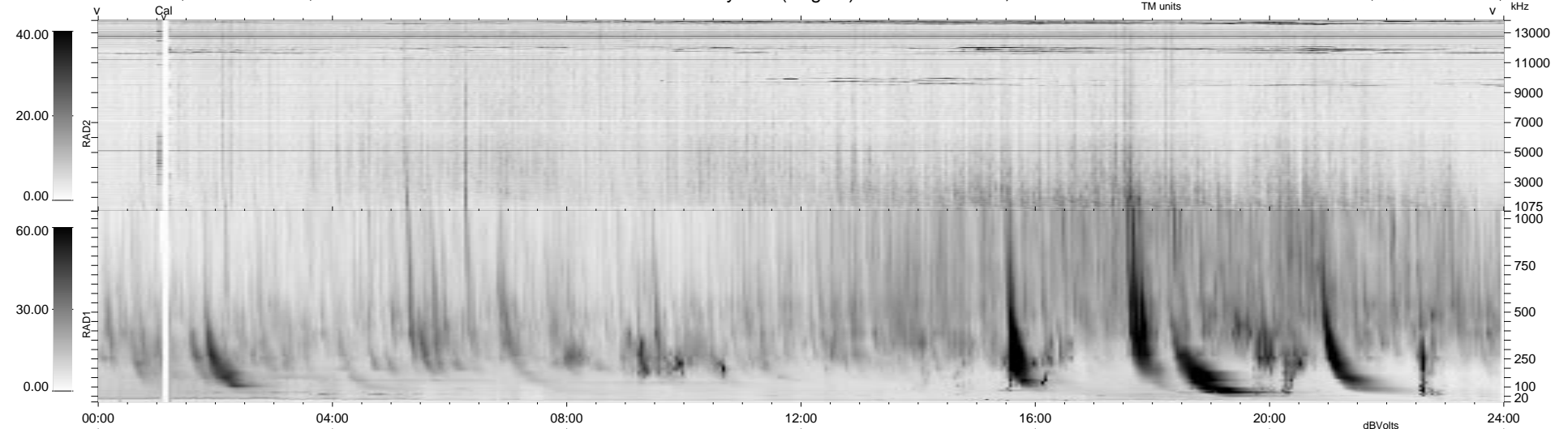


0 bad + 2 good MF/ZMF projected (100%) - 0 missing MFs
 Avg interval = 180 secs
 Re = 104.93 (99.96, 31.87, -1.18 GSE)

1.7d VMS-SunOS LZ version = v01
 DAILY Tue Sep 9, 2008
 Re = 107.67 (98.58, 43.30, -0.33 GSE)

WIND/WAVES Summary Plot (Page 1) for 09-JUN-2001, DOY = 160



RAD2
 Antenna Ey
 Mode LIN(1)
 SUM/SEP SEP
 Toggle OFF
 RAD1
 Antenna Ex
 Mode LIS(2,3)
 SUM/SEP SUM
 Toggle OFF
 TNR
 Antenna ExEy
 Mode A-32
 Sweep ACE