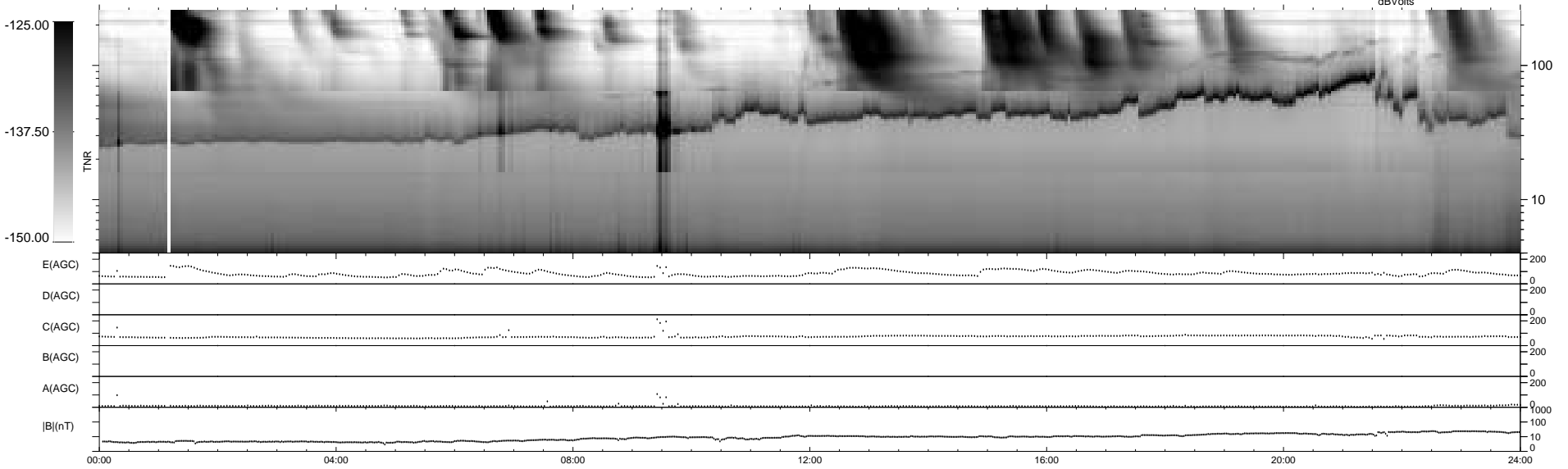
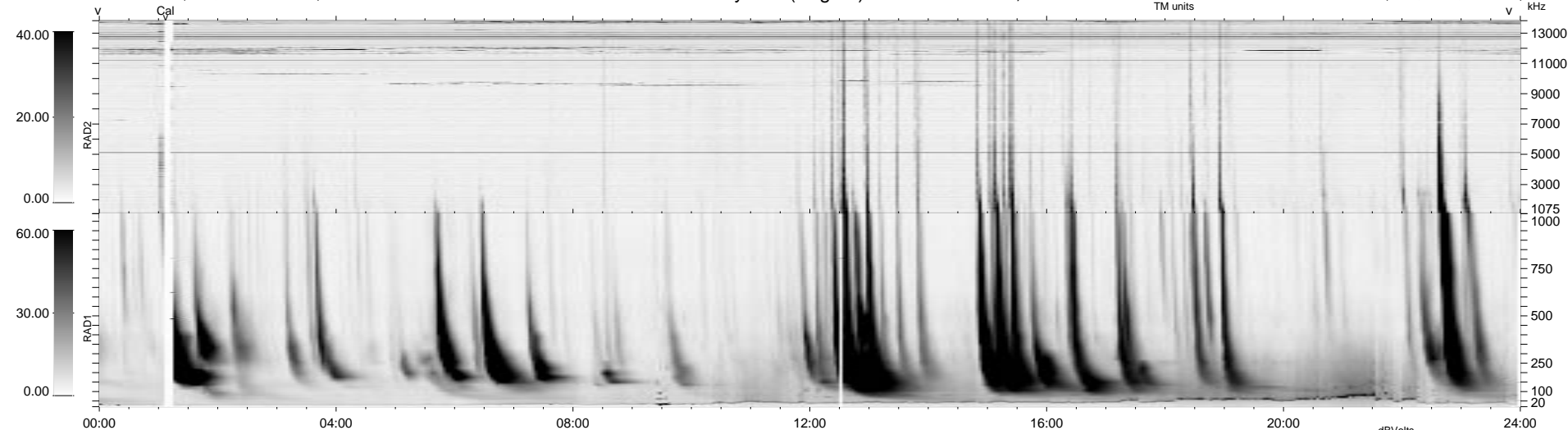


0 bad + 2 good MF/ZMF projected (100%) - 0 missing MFs
 Avg interval = 180 secs
 Re = 110.61 (91.56, -61.69, -6.83 GSE)

1.7d VMS-SunOS LZ version = v01
 DAILY Tue Sep 9, 2008
 Re = 107.34 (94.37, -50.77, -6.30 GSE)

WIND/WAVES Summary Plot (Page 1) for 01-JUN-2001, DOY = 152



E(AGC) 200
 D(AGC) 200
 C(AGC) 200
 B(AGC) 200
 A(AGC) 200
 |B|(nT) 1000
 100
 10
 0

RAD2
 Antenna Ey
 Mode LIN(1)
 SUM/SEP SEP
 Toggle OFF
 RAD1
 Antenna Ex
 Mode LIS(2,3)
 SUM/SEP SUM
 Toggle OFF
 TNR
 Antenna ExEy
 Mode A-32
 Sweep ACE