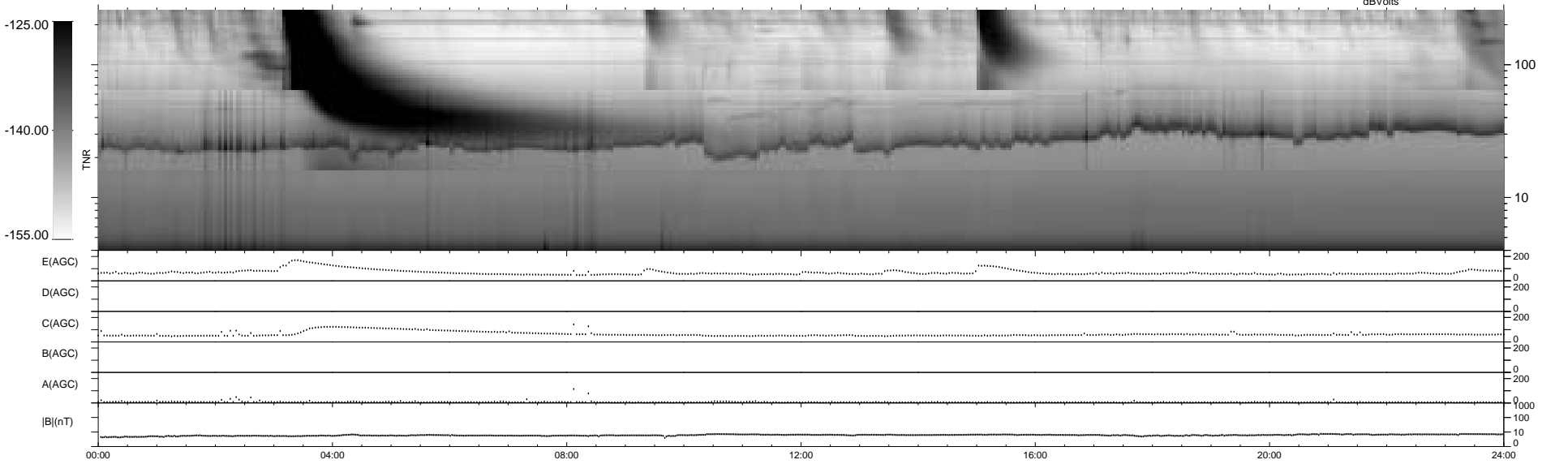
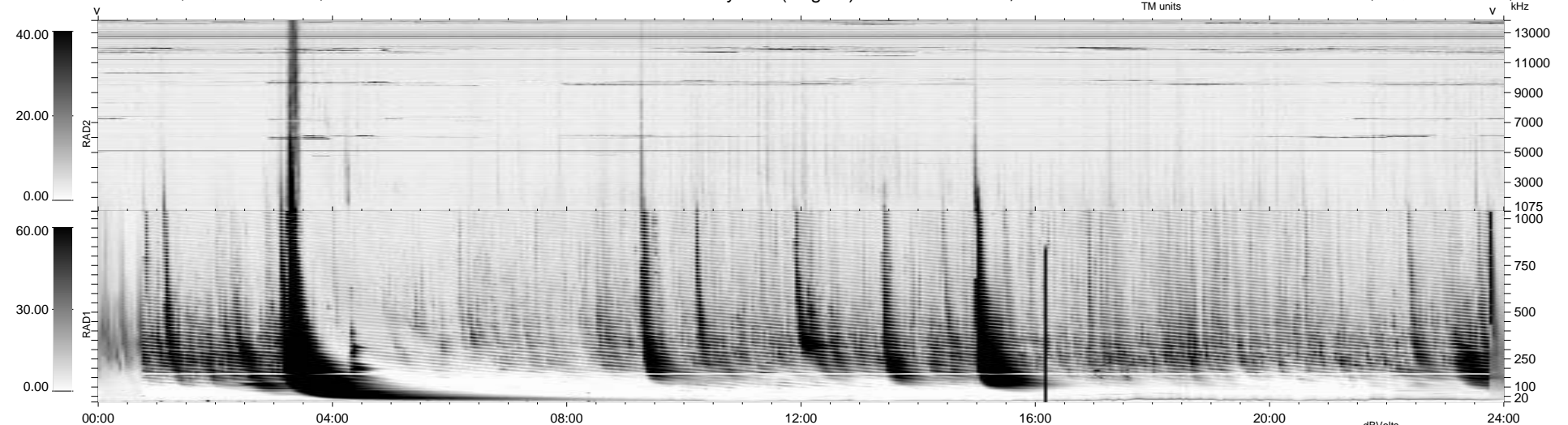


0 bad + 2 good MF/ZMF projected (100%) - 0 missing MFs  
 Avg interval = 180 secs  
 Re = 165.62 (51.88, -157.00, -9.50 GSE)

1.7d VMS-SunOS LZ version = v01  
 DAILY Tue Sep 9, 2008  
 Re = 160.31 (55.38, -150.15, -9.46 GSE)

WIND/WAVES Summary Plot (Page 1) for 21-MAY-2001, DOY = 141



RAD2  
 Antenna Ey  
 Mode LIN(1)  
 SUM/SEP SEP  
 Toggle OFF

RAD1  
 Antenna Ex  
 Mode LIS(2,3)  
 SUM/SEP SUM .SEP  
 Toggle OFF

TNR  
 Antenna ExEy  
 Mode A-32  
 Sweep ACE

LIS(2,8) SUM