

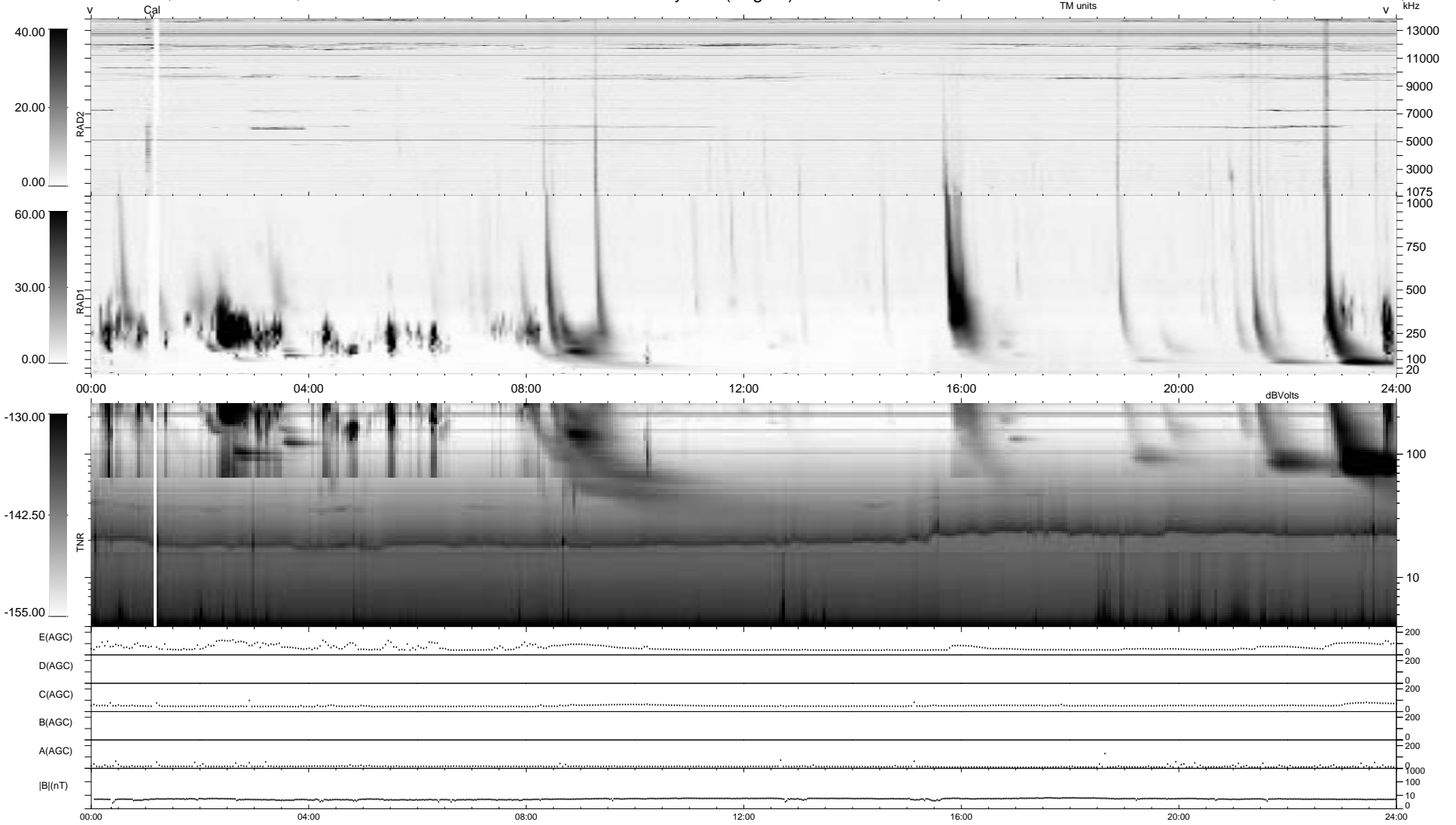
0 bad + 2 good MF/ZMF projected (100%) - 0 missing MFs
 Avg interval = 180 secs
 Re = -190.75 (36.06, -187.08, -9.33 GSE)

1.7d VMS-SunOS

LZ version = v01

WIND/WAVES Summary Plot (Page 1) for 16-MAY-2001, DOY = 136

DAILY Tue Sep 9, 2008
 Re = 186.02 (38.94, -181.66, -9.41 GSE)



RAD2
 Antenna Ey
 Mode LIN(1)
 SUM/SEP SEP
 Toggle OFF
 RAD1
 Antenna Ex
 Mode LIS(2,3)
 SUM/SEP SUM
 Toggle OFF
 TNR
 Antenna ExEy
 Mode A-32
 Sweep ACE