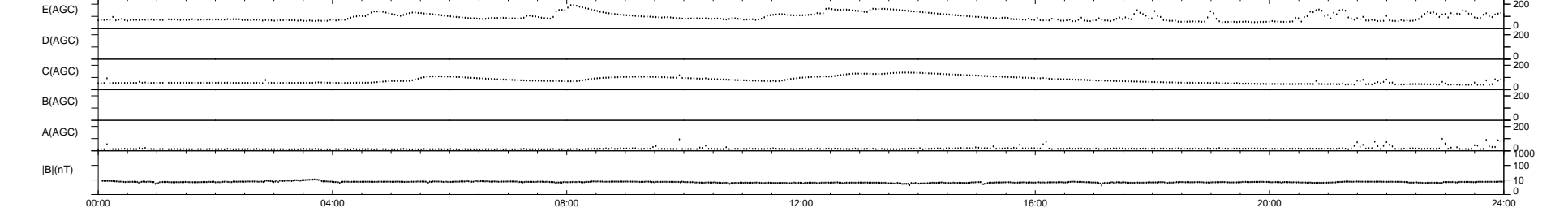
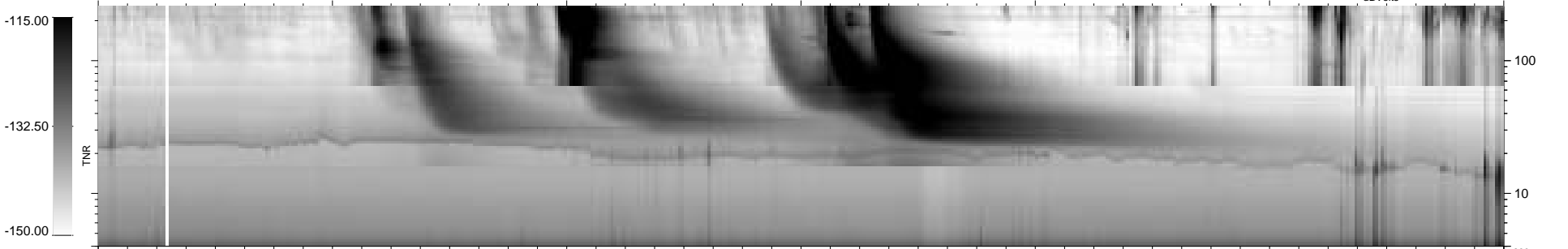
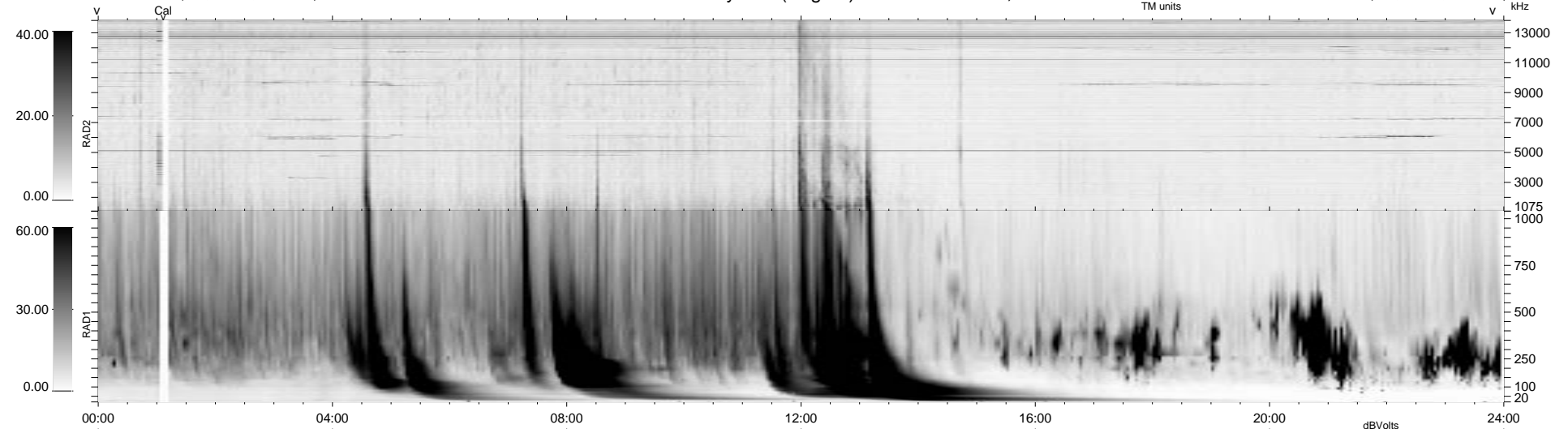


0 bad + 2 good MF/ZMF projected (100%) - 0 missing MFs
 Avg interval = 180 secs
 Re = -254.28 (8.20, -254.09, -5.12 GSE)

1.7d VMS-SunOS LZ version = v01
 DAILY Tue Sep 9, 2008
 Re = 252.41 (8.60, -252.21, -5.39 GSE)

WIND/WAVES Summary Plot (Page 1) for 26-APR-2001, DOY = 116



```

RAD2
Antenna Ey .....
Mode LIN(1) .....
SUM/SEP SEP .....
Toggle OFF .....

RAD1
Antenna Ex .....
Mode LIS(2,3) .....
SUM/SEP SUM .....
Toggle OFF .....

TNR
Antenna ExEy .....
Mode A-32 .....
Sweep ACE .....
  
```