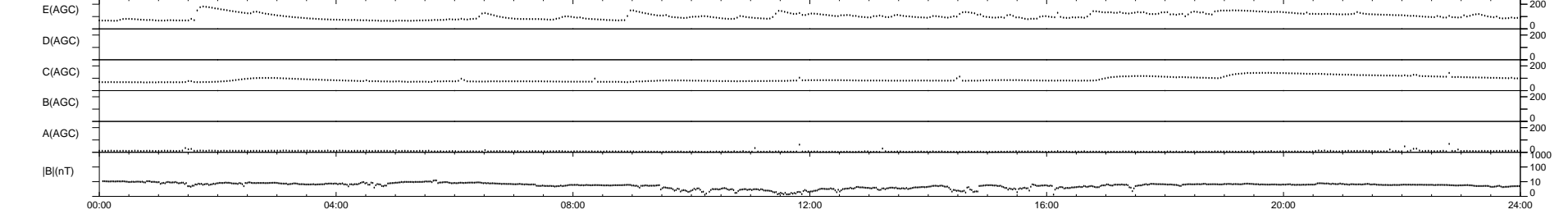
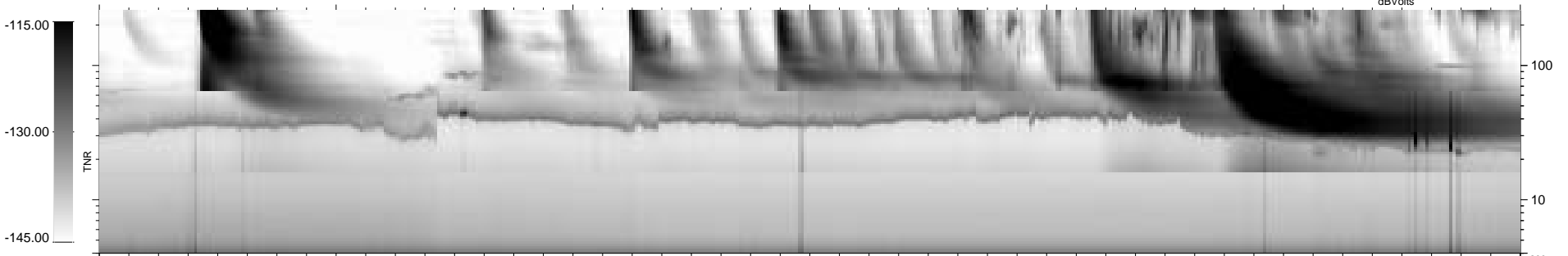
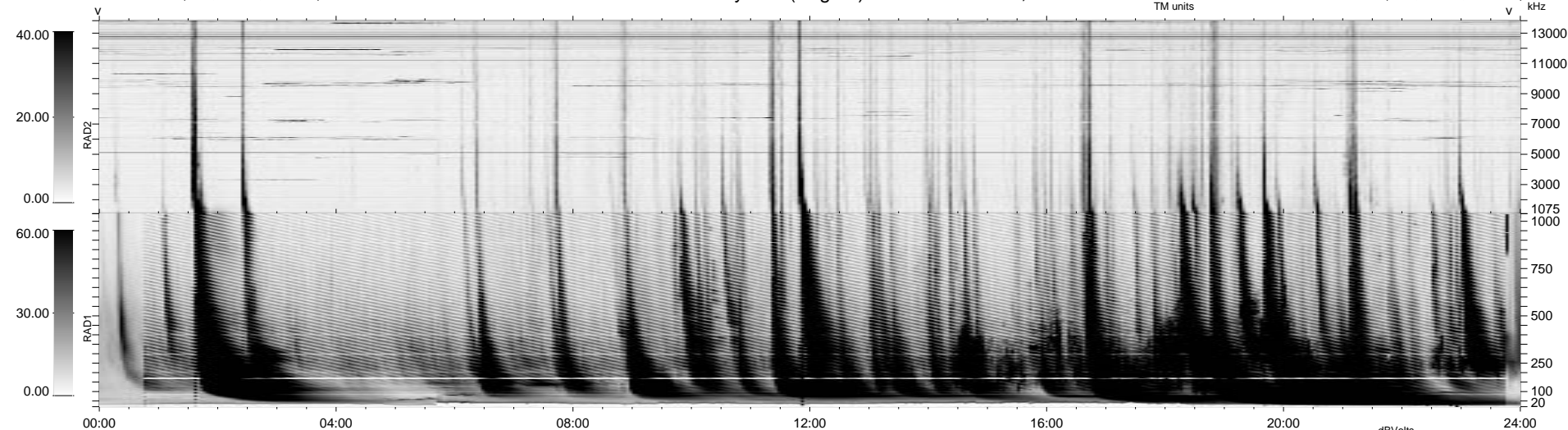


0 bad + 2 good MF/ZMF projected (100%) - 0 missing MFs
 Avg interval = 180 secs
 Re = 221.50 (-8.25, -221.28, 5.25 GSE)

1.7d VMS-SunOS LZ version = v02
 DAILY Tue Sep 9, 2008
 Re = 224.95 (-6.74, -224.80, 4.97 GSE)

WIND/WAVES Summary Plot (Page 1) for 24-MAR-2001, DOY = 83



RAD2
 Antenna Ey
 Mode LIN(1)
 SUM/SEP SEP
 Toggle OFF
 RAD1
 Antenna Ex
 Mode LIS(2,8) LIS(2,8)
 SUM/SEP SUM SEP SUM
 Toggle OFF
 TNR
 Antenna ExEy
 Mode A-32
 Sweep ACE