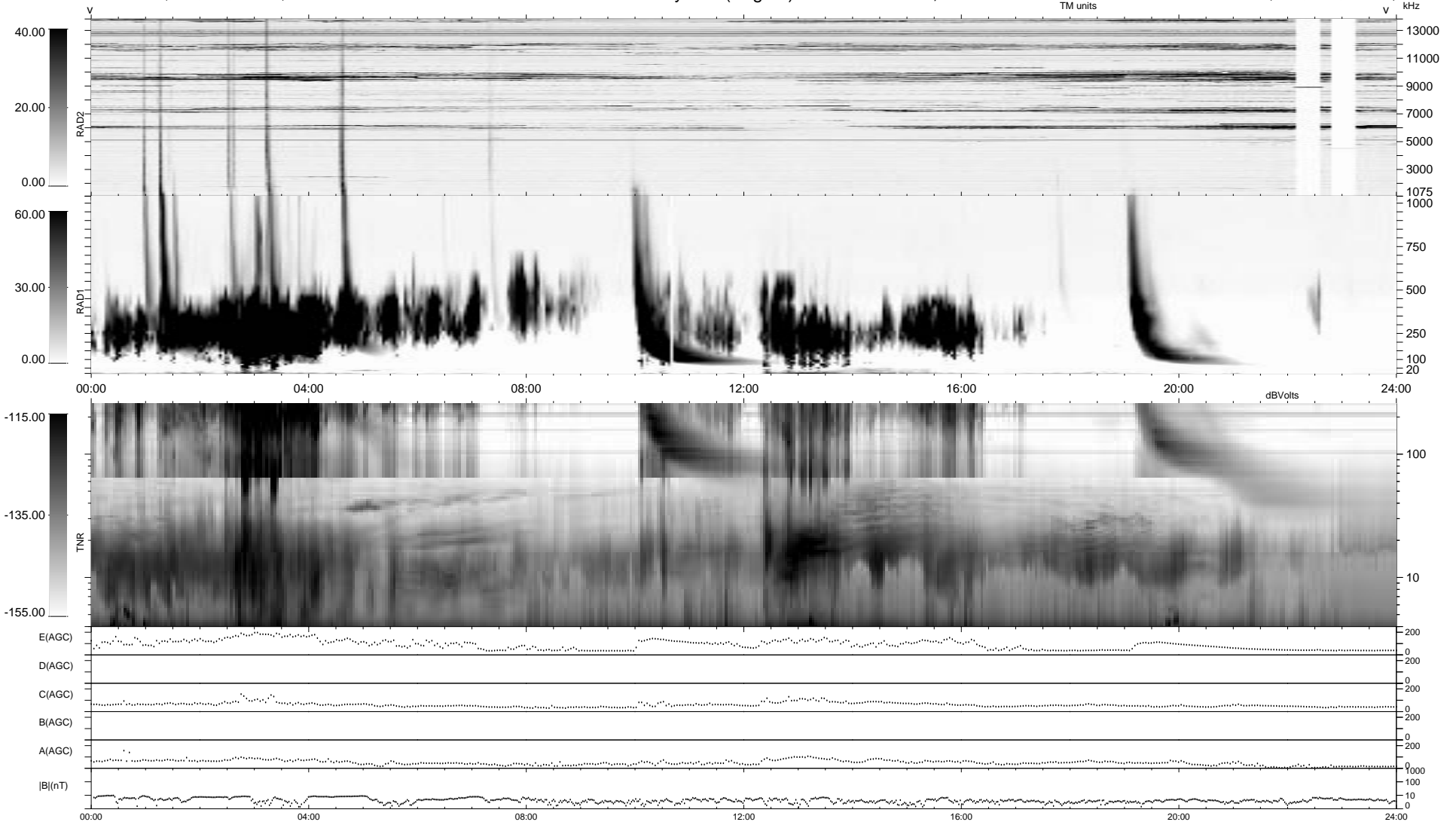


0 bad + 2 good MF/ZMF projected (100%) - 0 missing MFs
 Avg interval = 180 secs
 Re = - 91.94 (-91.67, -5.70, 4.24 GSE)

1.7d VMS-SunOS LZ version = v01
 DAILY Tue Sep 9, 2008
 Re = 92.82 (-90.85, -18.40, 4.93 GSE)

WIND/WAVES Summary Plot (Page 1) for 24-FEB-2001, DOY = 55



```

RAD2
Antenna Ey .....
Mode LIN(1) .....
SUM/SEP SEP .....
Toggle OFF .....
RAD1
Antenna Ex .....
Mode LIS(2,3) .....
SUM/SEP SUM .....
Toggle OFF .....
TNR
Antenna ExEy .....
Mode A-32 .....
Sweep ACE .....
  
```