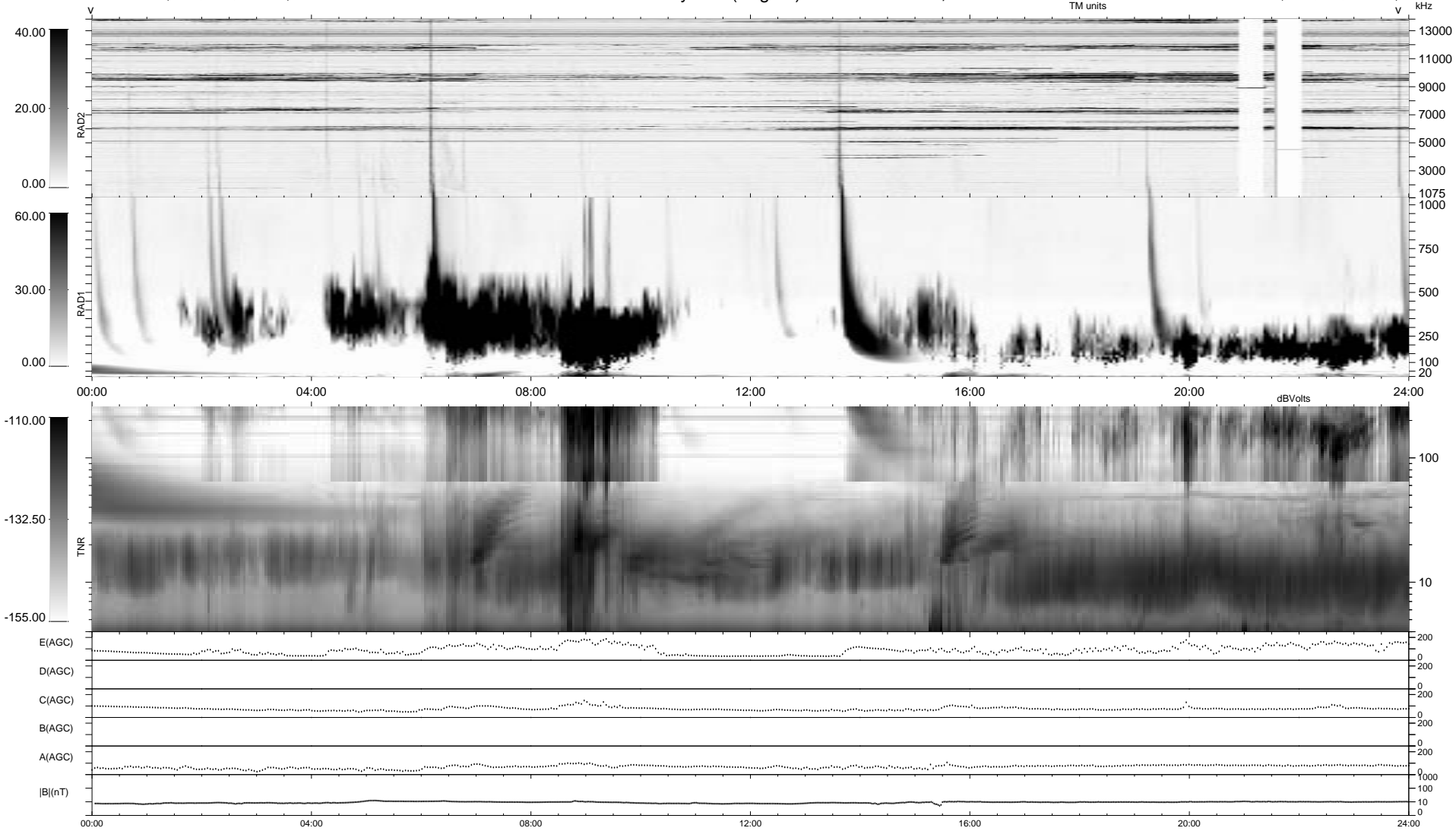


0 bad + 2 good MF/ZMF projected (100%) - 0 missing MFs  
 Avg interval = 180 secs  
 Re = 93.09 (-90.93, 19.79, 2.69 GSE)

1.7d VMS-SunOS LZ version = v02  
 DAILY Tue Sep 9, 2008  
 Re = 92.05 (-91.70, 7.22, 3.48 GSE)

WIND/WAVES Summary Plot (Page 1) for 22-FEB-2001, DOY = 53



RAD2  
 Antenna Ey .....  
 Mode LIN(1) .....  
 SUM/SEP SEP .....  
 Toggle OFF .....  
 RAD1  
 Antenna Ex .....  
 Mode LIS(2,3) .....  
 SUM/SEP SUM .....  
 Toggle OFF .....  
 TNR  
 Antenna ExEy .....  
 Mode A-32 .....  
 Sweep ACE .....  
 FIX(15ZINR0(69)LIN(1))