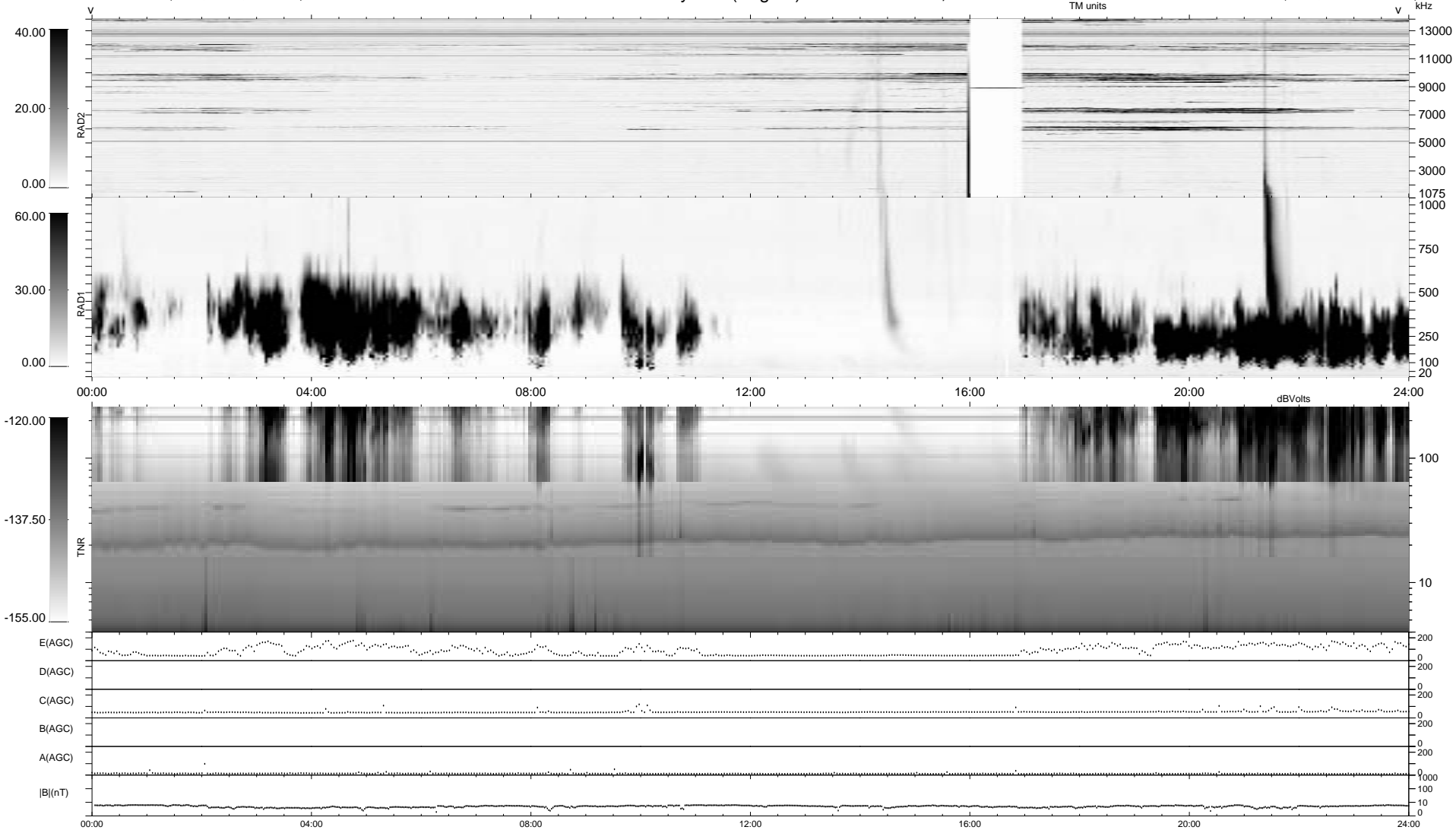


0 bad + 2 good MF/ZMF projected (100%) - 0 missing MFs  
 Avg interval = 180 secs  
 Re = 159.68 (-43.90, 153.29, -8.58 GSE)

1.7d VMS-SunOS LZ version = v01  
 DAILY Tue Sep 9, 2008  
 Re = 154.15 (-47.45, 146.45, -7.91 GSE)

### WIND/WAVES Summary Plot (Page 1) for 08-FEB-2001, DOY = 39



```

RAD2
Antenna Ey .....
Mode LIN(1) ..... FIX(157) LIN(1)
SUM/SEP SEP .....
Toggle OFF .....

RAD1
Antenna Ex .....
Mode LIS(2,3) .....
SUM/SEP SUM .....
Toggle OFF .....

TNR
Antenna ExEy .....
Mode A-32 .....
Sweep ACE .....
  
```