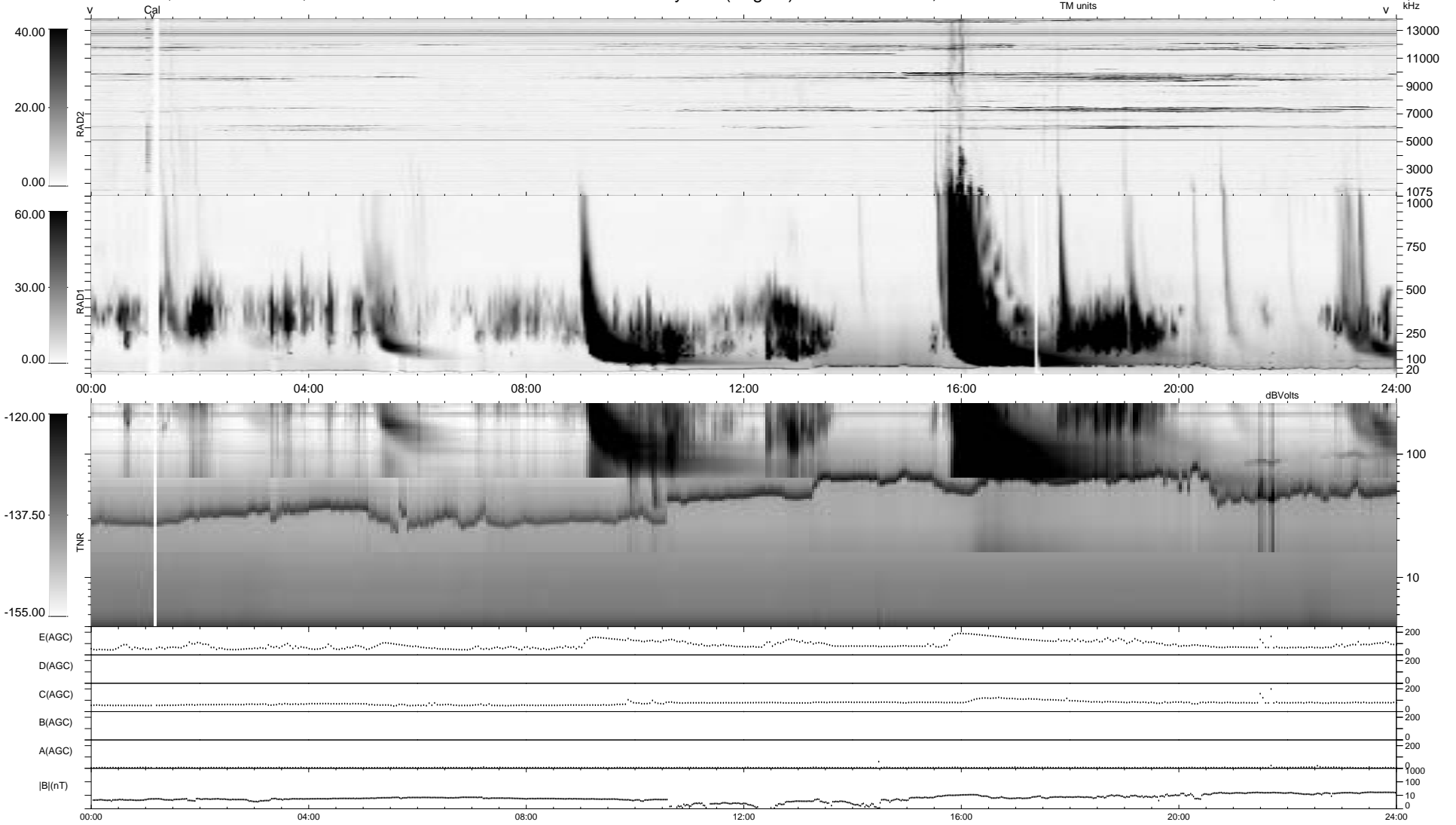


0 bad + 2 good MF/ZMF projected (100%) - 0 missing MFs  
 Avg interval = 180 secs  
 Re = 211.01 (-13.63, 210.09, -14.28 GSE)

1.7d VMS-SunOS LZ version = v01  
 DAILY Tue Sep 9, 2008  
 Re = 207.27 (-15.59, 206.21, -13.90 GSE)

### WIND/WAVES Summary Plot (Page 1) for 28-JAN-2001, DOY = 28



```

RAD2
Antenna Ey .....
Mode LIN(1) .....
SUM/SEP SEP .....
Toggle OFF .....

RAD1
Antenna Ex .....
Mode LIS(2,3) .....
SUM/SEP SUM .....
Toggle OFF .....

TNR
Antenna ExEy .....
Mode A-32 .....
Sweep ACE .....
  
```