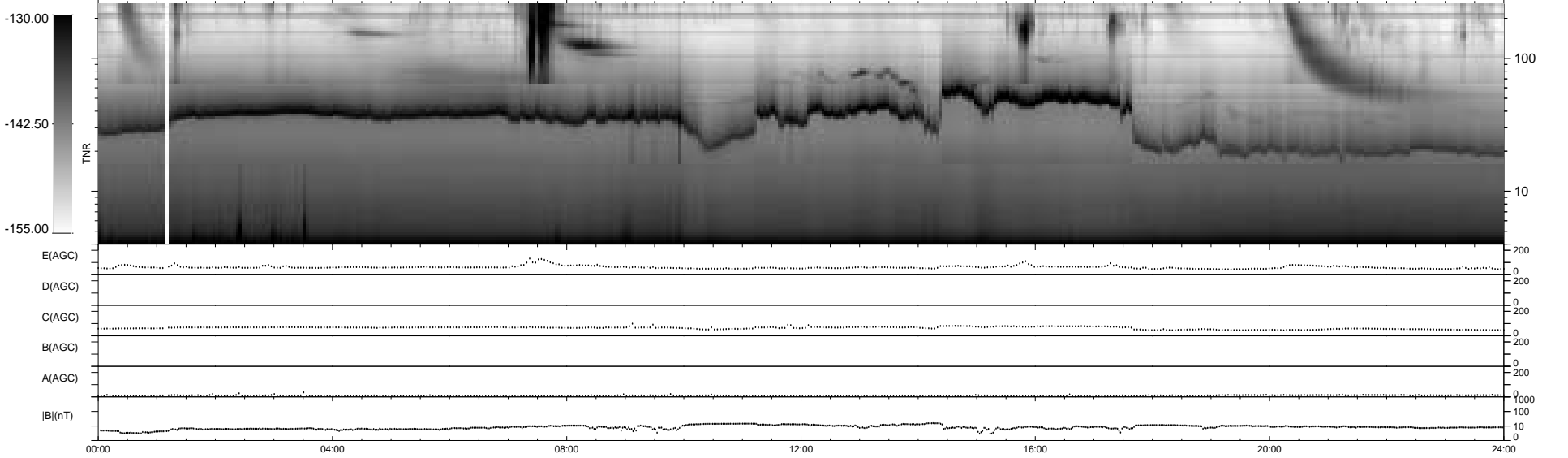
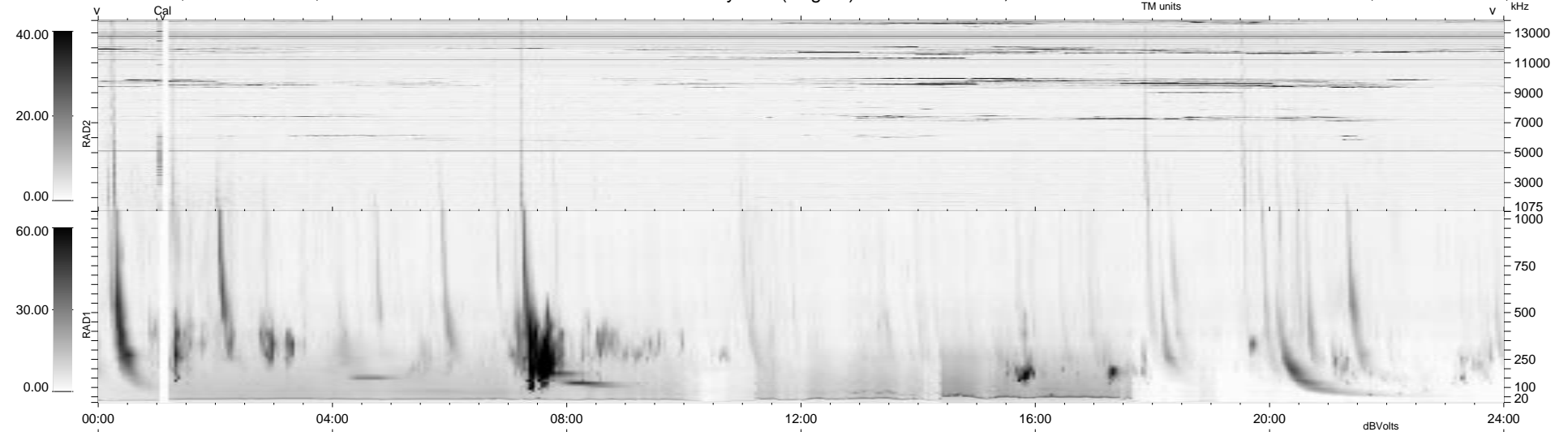


0 bad + 2 good MF/ZMF projected (100%) - 0 missing MFs  
 Avg interval = 180 secs  
 Re = -253.21 (3.54, 252.57, -17.60 GSE)

1.7d VMS-SunOS LZ version = v01  
 DAILY Tue Sep 9, 2008  
 Re = 253.37 (3.13, 252.73, -17.67 GSE)

### WIND/WAVES Summary Plot (Page 1) for 04-JAN-2001, DOY = 4



RAD2  
 Antenna Ey .....  
 Mode LIN(1) .....  
 SUM/SEP SEP .....  
 Toggle OFF .....  
 RAD1  
 Antenna Ex .....  
 Mode LIS(2,3) .....  
 SUM/SEP SUM .....  
 Toggle OFF .....  
 TNR  
 Antenna ExEy .....  
 Mode A-32 .....  
 Sweep ACE .....