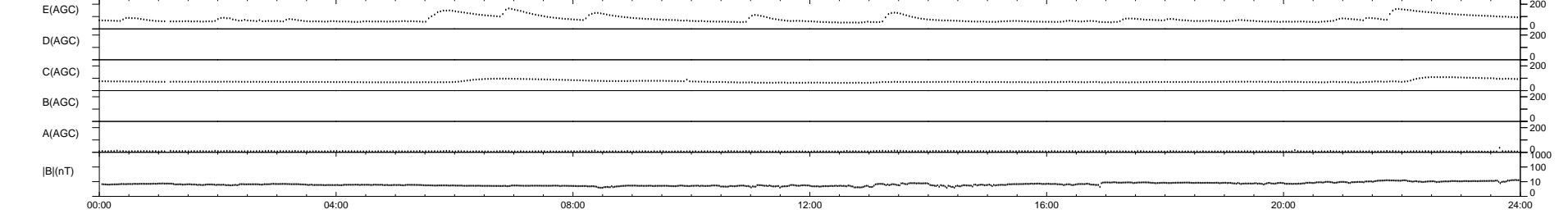
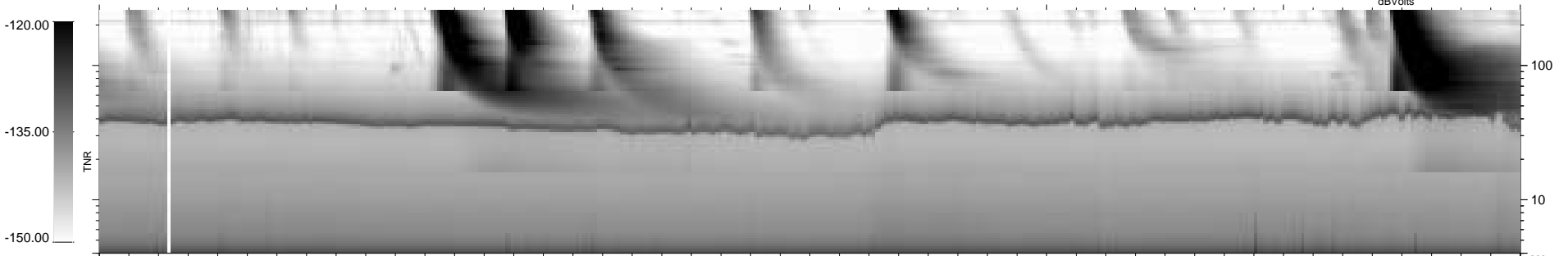
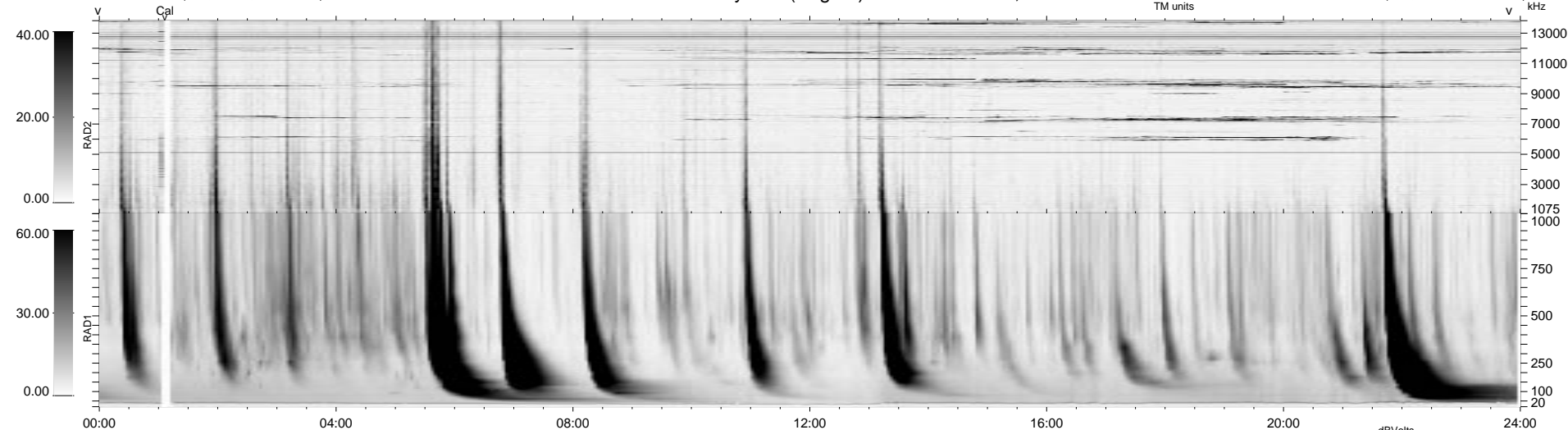


0 bad + 2 good MF/ZMF projected (100%) - 0 missing MFs  
 Avg interval = 180 secs  
 Re = 252.28 (4.42, 251.64, -17.39 GSE)

1.7d VMS-SunOS LZ version = v02  
 DAILY Tue Sep 9, 2008  
 Re = 252.84 (3.98, 252.20, -17.50 GSE)

WIND/WAVES Summary Plot (Page 1) for 02-JAN-2001, DOY = 2



RAD2  
 Antenna Ey .....  
 Mode LIN(1) .....  
 SUM/SEP SEP .....  
 Toggle OFF .....  
 RAD1  
 Antenna Ex .....  
 Mode LIS(2,3) .....  
 SUM/SEP SUM .....  
 Toggle OFF .....  
 TNR  
 Antenna ExEy .....  
 Mode A-32 .....  
 Sweep ACE .....